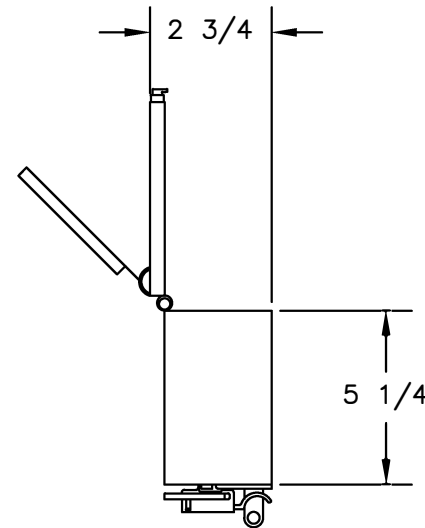
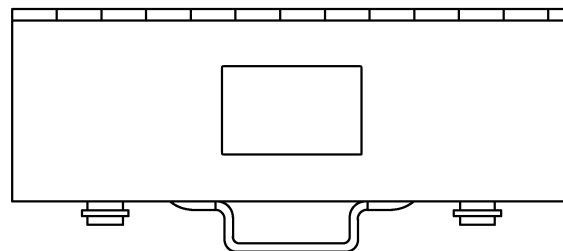
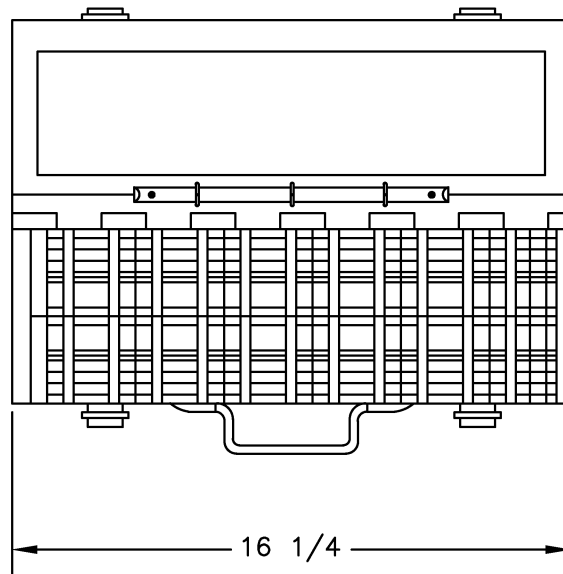


REVISIONS				
REV. SYM.	E.C.O. NUMBER	DESCRIPTION	BY DATE	APP'D DATE
1		ORIGINAL RELEASE	JWJ 2/5/01	RRR 2/5/01



BT-A-5506-1	6 (WIDE)	1.690 to 2.030
BT-A-5505-1	5 (WIDE)	1.375 to 1.690
BT-A-5504-1	4 (WIDE)	1.063 to 1.375
BT-A-5503-1	3 (WIDE)	.812 to 1.063
BT-A-5502-1	2 (WIDE)	.531 to .812
BT-A-5501-1	1 (WIDE)	.375 to .531
BT-A-5506	6	1.690 to 2.030
BT-A-5505	5	1.375 to 1.690
BT-A-5504	4	1.063 to 1.375
BT-A-5503	3	.812 to 1.063
BT-A-5502	2	.531 to .812
BT-A-5501	1	.375 to .531
P/N	SIZE	FOR DIAMETERS

EACH KIT CONTAINS 2PCS OF EACH OF THE ABOVE

RESTRICTED & CONFIDENTIAL	MATERIAL	ITEM	PART NO.	QTY.	DESCRIPTION/REMARKS
CONFIDENTIAL PROPERTY OF DANIELS MANUFACTURING CORP. NOT TO BE DISCLOSED TO OTHERS, REPRODUCED OR USED FOR ANY OTHER PURPOSE EXCEPT AS AUTHORIZED IN WRITING BY DANIELS MANUFACTURING. MUST BE RETURNED TO DANIELS MANUFACTURING CORP. ON COMPLETION OF ORDER OR OTHER PURPOSE FOR WHICH LENT. DO NOT SCALE DRAWING		DRW. DATE	J. JOYCE 2/5/01		DMC DANIELS MANUFACTURING CORP. ORLANDO, FLORIDA CAGE 11651 TITLE QUICK CHANGE JAW SET ENVELOPE DRAWING WHERE USED: SIZE B NTS CAD P/N BT-S-550-ENV SHEET 1 OF 1 POSTING DWG. NO. BT-S-550-ENV REV. 1
		GW'D. DATE	RRR 2/5/01		
		HEAT TREAT	APP'D. DATE		
		FINISH			
		NOTE: THIS DRAWING IS AN OUTLINE DRAWING OF THE RESPECTIVE DMC PART NUMBER INDICATED. ACTUAL DMC PART NUMBER IS DRAWING NUMBER WITHOUT THE "-ENV" SUFFIX.			

X-ON Electronics

Largest Supplier of Electrical and Electronic Components

Click to view similar products for [Crimpers / Crimping Tools](#) category:

Click to view products by [DMC](#) manufacturer:

Other Similar products are found below :

[010-0096](#) [M225201-06](#) [M225202-37](#) [6-1579015-5](#) [CT150-6-RH07](#) [622-6441LF](#) [M322](#) [6-304052-1](#) [63456-0054](#) [63484-3701](#) [63800-8355](#)
[63819-1875](#) [63819-2875](#) [63819-4475](#) [63823-3475](#) [63827-5375](#) [64001-0975](#) [64001-4175](#) [64005-0175](#) [662903-2](#) [690602-6](#) [7-1579001-9](#) [7-](#)
[23471-1](#) [762637-1](#) [808714-1](#) [811242-5](#) [999-50-020083](#) [1-21002-3](#) [1-21002-7](#) [12085270](#) [1-21002-6](#) [1-21113-6](#) [1-22548-4](#) [125442-1](#)
[DCE.91.073.BVC](#) [DCE.91.090.3MVM](#) [DCE.91.130.5MVU](#) [DCE.91.202.BVCM](#) [1338300-1](#) [1-354003-0](#) [1338301-1](#) [DF62/RE-MD](#) [142321](#)
[1456088-1](#) [1490794-1](#) [1-45804-6](#) [1490357-2](#) [1490357-3](#) [AX100749](#) [1-59619-7](#)