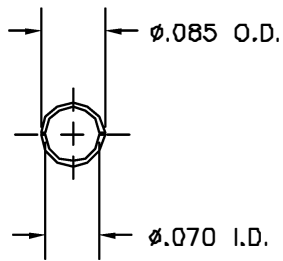
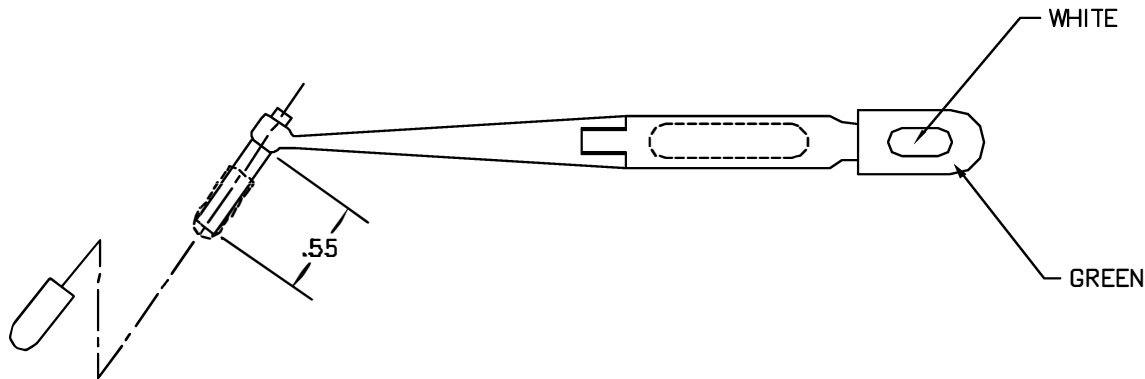
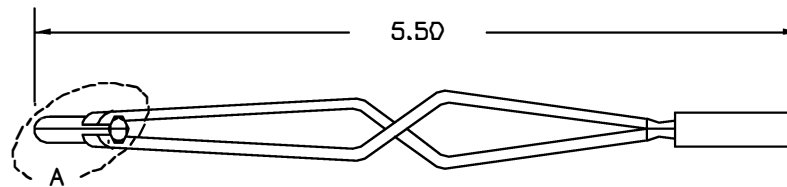



| REVISIONS |               |                  |                |                |
|-----------|---------------|------------------|----------------|----------------|
| REV. SYM. | E.C.G. NUMBER | DESCRIPTION      | BY DATE        | APP'D DATE     |
| 1         |               | ORIGINAL RELEASE | JWJ<br>12/7/99 | RRR<br>12/7/99 |



VIEW A



**UNCONTROLLED DOCUMENT  
WILL NOT BE UPDATED**

|   |     |  |  |  |  |
|---|-----|--|--|--|--|
| <b>RESTRICTED &amp; CONFIDENTIAL</b><br>CONFIDENTIAL PROPERTY OF DANIELS<br>MANUFACTURING CORP. NOT TO BE<br>DISCLOSED TO OTHERS. REPRODUCED<br>OR USED FOR ANY OTHER PURPOSE<br>EXCEPT AS AUTHORIZED IN WRITING<br>BY DANIELS MANUFACTURING.<br>MUST BE RETURNED TO DANIELS<br>MANUFACTURING CORP. ON COMPLETION<br>OF ORDER OR OTHER PURPOSE FOR<br>WHICH LENT. |     | ITEM   | PART NO.   | QTY.   | DESCRIPTION/REMARKS  |
|   |     | URN.   | J. JOYCE   | DATE<br>12/7/99                                |  <b>DANIELS MANUFACTURING CORP.</b><br>ORLANDO, FLORIDA<br>CAGE 71857 |
| CHK'D.  | RRR | DATE<br>12/7/99  |  |  |  |
| APP'D.  |     | DATE   |  |  |  |
| APP'D.  |     | DATE   |  |  |  |
| NOTE:<br>THIS DRAWING IS AN OUTLINE<br>DRAWING OF THE RESPECTIVE<br>DNC PART NUMBER<br>INDICATED. ACTUAL DNC<br>PART NUMBER IS DRAWING<br>NUMBER WITHOUT<br>THE "-ENV" SUFFIX.  |     |  | TITLE<br><b>REMOVAL TOOL #20<br/>         ENVELOPE DRAWING</b> |  |  |
| DO NOT SCALE DRAWING  |     | WHERE USED<br>SIZE <input type="checkbox"/> NTS<br>SCALE<br>CAD P/N<br>DRK145-ENV<br>SHEET OF<br>1 1 |  | POSTING<br>DWG. NO.<br>DRK145-ENV<br>REV.<br>1 |  |

## X-ON Electronics

Largest Supplier of Electrical and Electronic Components

*Click to view similar products for [Extraction, Removal & Insertion Tools](#) category:*

*Click to view products by [DMC manufacturer](#):*

Other Similar products are found below :

[M8196914-08](#) [768211-2](#) [809-131](#) [844751-2](#) [8-59558-2](#) [91018-1](#) [12014013](#) [12093647](#) [1-21048-0](#) [R282867020](#) [12093078](#) [1-21048-6](#)  
[12121897](#) [DCF.91.405.5LT](#) [1322](#) [15314260](#) [15350698](#) [15350707](#) [15430130](#) [1579018-4](#) [1643916-1](#) [1-679532-0](#) [1976593-3](#) [OUTEXT-0321](#)  
[2-1579008-3](#) [2-1579008-4](#) [229694-7](#) [231106-1](#) [241469](#) [91040-3](#) [91040-7](#) [965004-000](#) [965069-000](#) [1738219-1](#) [ET-JL05-16](#) [FG 0300 146](#)  
[3000](#) [FIT-6](#) [210S048](#) [2-1579007-9](#) [231879-1](#) [312138-3](#) [RJ11FODE](#) [356-162](#) [M8196914-10](#) [4-1579018-0](#) [430395-001](#) [483249-1](#) [5-](#)  
[1579007-2](#) [5-1579007-9](#) [BPR10](#)