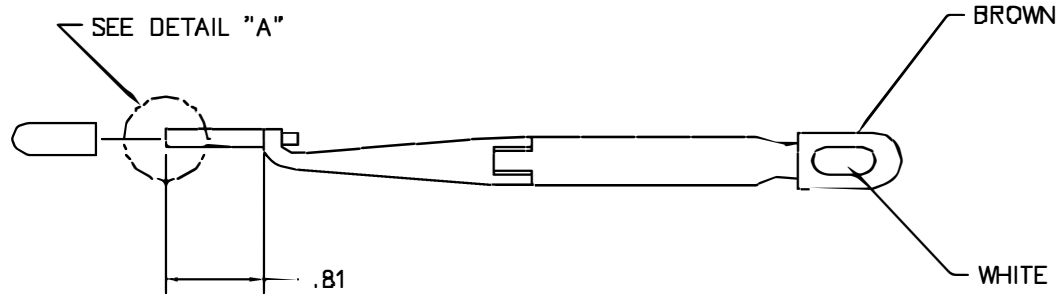
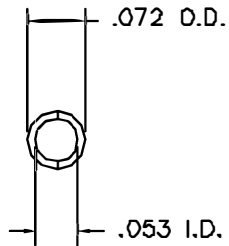
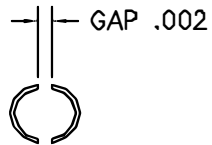
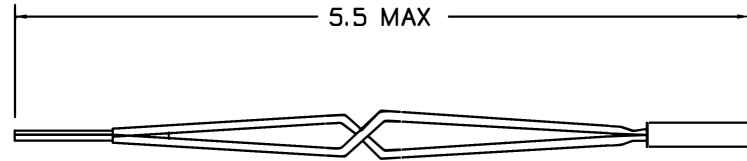



| REVISIONS |             |                  |                |                |
|-----------|-------------|------------------|----------------|----------------|
| REV. SYN. | EGD. NUMBER | DESCRIPTION      | BY DATE        | APPD. DATE     |
| 1         |             | ORIGINAL RELEASE | JWJ<br>8/30/02 | RRR<br>8/30/02 |



DETAIL "A"

**UNCONTROLLED DOCUMENT  
WILL NOT BE UPDATED**

|   |  |   |              |                          |  |
|---|--|---|--------------|--------------------------|--|
| <b>RESTRICTED &amp; CONFIDENTIAL</b>  |  | ITEM  | PART NO.     | QTY.                     | DESCRIPTION/REMARKS  |
| CONFIDENTIAL PROPERTY OF DANIELS MANUFACTURING CORP. NOT TO BE DISCLOSED TO OTHERS. REPRODUCED OR USED FOR ANY OTHER PURPOSE, EXCEPT AS AUTHORIZED IN WRITING BY DANIELS MANUFACTURING. MUST BE RETURNED TO DANIELS MANUFACTURING CORP. ON COMPLETION OF ORDER OR OTHER PURPOSE FOR WHICH LENT. |  | URN.  | J. JOYCE     | DATE<br>8/30/02          |  <b>DANIELS MANUFACTURING CORP.</b><br>ORLANDO, FLORIDA<br>CAGE 11851 |
|   |  | CHKD.   | RRR          | DATE<br>8/30/02          |  |
|   |  | APPD.   |              | DATE                     |  |
|   |  | APPD.   |              | DATE                     |  |
|   |  | TITLE<br>REMOVAL TOOL #22<br>ENVELOPE DRAWING |              |                          |  |
|   |  | WHERE USED:                                   |              |                          |  |
|   |  | SIZE<br>B                                     | SCALE<br>NTS | CAD P/N<br>DRK223-22-ENV | SHEET OF<br>1 1  |
|   |  | POSTING                                       |              | P/N<br>DRK223-22-ENV     | REV.<br>1  |
| DO NOT SCALE DRAWING  |  |   |              |                          |  |

## X-ON Electronics

Largest Supplier of Electrical and Electronic Components

*Click to view similar products for [Pliers & Tweezers](#) category:*

*Click to view products by [DMC](#) manufacturer:*

Other Similar products are found below :

[0031](#) [32750](#) [PN-5050/38D](#) [PG-TP-30D](#) [PG-DP-18-N](#) [G77015](#) [4-1532129-2](#) [77 12 115](#) [0037](#) [T0058765801](#) [571](#) [76C](#) [MICROFOX-SP-1\\_DB](#)  
[37 31 125](#) [RX 8130](#) [37 33 125](#) [DRP10N](#) [32 11 135](#) [36 12 130](#) [0036](#) [0032](#) [HT-109](#) [6211-06](#) [6214-45](#) [6217-05](#) [6231-07](#) [6231-08](#) [6411-06](#)  
[DP15N](#) [DP20N](#) [PN 5050/10D](#) [PN 5050/19D](#) [PNI 5000](#) [TR 20 M](#) [TR 25 15](#) [TR 25 P A](#) [TR 30 58 R A](#) [TR 5000](#) [TR 5000 10 D](#) [TR 5000 PG](#)  
[TR 5000 PR](#) [MICROFOX-SP\\_DB](#) [CUTFOX-SE LM](#) [CUTFOX-SE LM\\_DB](#) [FMHT0-80519](#) [TR 58 R A](#) [43333](#) [102ACAX](#) [103ACA](#)  
[141SAP](#)