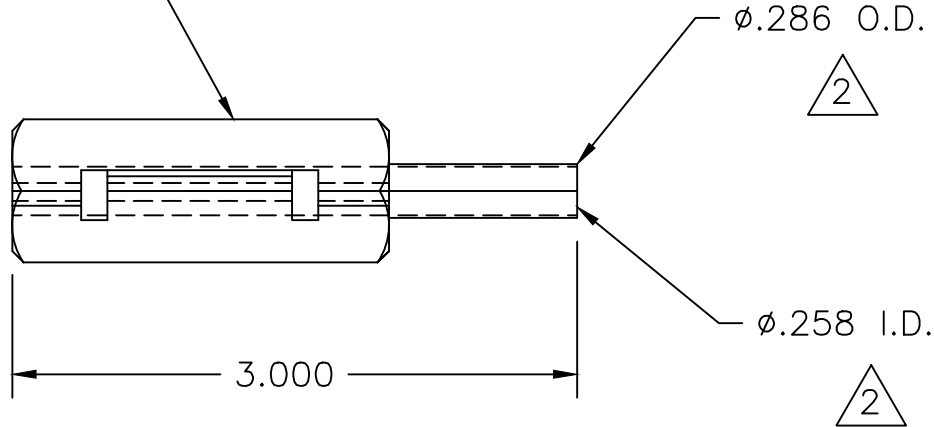
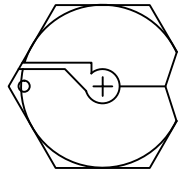


**UNCONTROLLED DOCUMENT
WILL NOT BE UPDATED**

"DANIELS MFG. CORP."
"ORLANDO, FL. USA "
"CAGE 11851 DRK310"



| REVISIONS | | | | |
|-----------|---------------|---|-----------------|-----------------|
| REV. SYM. | E.C.O. NUMBER | DESCRIPTION | BY DATE | APP'D DATE |
| 1 | | ORIGINAL RELEASE | DH 12/7/87 | JS 12/87 |
| 2 | 21484 | ADDED FRONT AND SIDE VIEWS AND REVISED PICTORALLY | KDH 11/05/09 | RRR 11/05/09 |
| 3 | 23584 | REVISED MARKING | ENF 11/13/14 | RRR 11/13/14 |


- 2.** DIMENSIONS APPLY WITH PROBES SQUEEZED TOGETHER.
1. FUNCTIONAL EQUIVALENT AMP 91074-1.

NOTES:

RESTRICTED & CONFIDENTIAL

CONFIDENTIAL PROPERTY OF DANIELS MANUFACTURING CORP. NOT TO BE DISCLOSED TO OTHERS, REPRODUCED OR USED FOR ANY OTHER PURPOSE EXCEPT AS AUTHORIZED IN WRITING BY DANIELS MANUFACTURING. MUST BE RETURNED TO DANIELS MANUFACTURING CORP. ON COMPLETION OF ORDER OR OTHER PURPOSES FOR WHICH LENT.

DO NOT SCALE DRAWING

| MATERIAL | ITEM | PART NO. | QTY. | DESCRIPTION/REMARKS |
|------------|---|----------|-----------------|---|
| | DRN. | DH | DATE 12/7/87 |  DANIELS MANUFACTURING CORP. ORLANDO, FLORIDA CAGE 11851 |
| | CHK'D. | JS | DATE 12/8/87 | |
| HEAT TREAT | APP'D. | AAM | DATE 12/8/87 | TITLE REMOVAL TOOL ENVELOPE DRAWING |
| | APP'D. | | DATE | |
| FINISH | NOTE: | | | WHERE USED: SIZE SCALE CAD P/N SHEET OF A FULL DRK310-ENV 1 1 |
| | THIS DRAWING IS AN OUTLINE DRAWING OF THE RESPECTIVE DMC PART NUMBER INDICATED. ACTUAL DMC PART NUMBER IS DRAWING NUMBER WITHOUT THE "-ENV" SUFFIX. | | | |
| | POSTING | | | REV. 3 |

X-ON Electronics

Largest Supplier of Electrical and Electronic Components

Click to view similar products for [Extraction, Removal & Insertion Tools](#) category:

Click to view products by [DMC manufacturer](#):

Other Similar products are found below :

[M8196914-08](#) [768211-2](#) [809-131](#) [844751-2](#) [8-59558-2](#) [91018-1](#) [12014013](#) [12093647](#) [1-21048-0](#) [R282867020](#) [12093078](#) [1-21048-6](#)
[12121897](#) [DCF.91.405.5LT](#) [1322](#) [15314260](#) [15350698](#) [15350707](#) [15430130](#) [1579018-4](#) [1643916-1](#) [1-679532-0](#) [1976593-3](#) [OUTEXT-0321](#)
[2-1579008-3](#) [2-1579008-4](#) [229694-7](#) [231106-1](#) [241469](#) [91040-3](#) [91040-7](#) [965004-000](#) [965069-000](#) [1738219-1](#) [ET-JL05-16](#) [FG 0300 146](#)
[3000](#) [FIT-6](#) [210S048](#) [2-1579007-9](#) [231879-1](#) [312138-3](#) [RJ11FODE](#) [356-162](#) [M8196914-10](#) [4-1579018-0](#) [430395-001](#) [483249-1](#) [5-](#)
[1579007-2](#) [5-1579007-9](#) [BPR10](#)