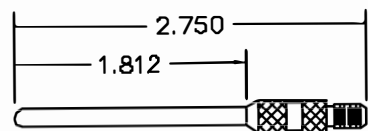
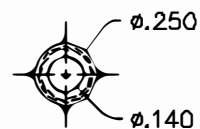
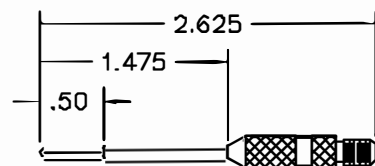


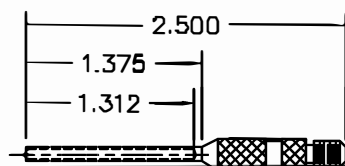
8252 - #8 TIP REMOVAL



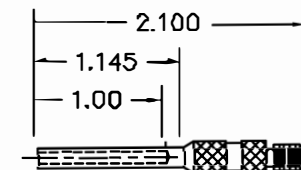
8251 - #8 SOCKET REMOVAL



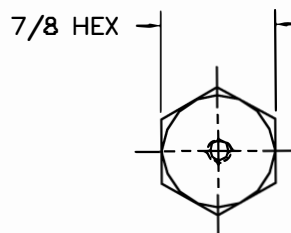
3698 - #12&16 SOCKET REMOVAL



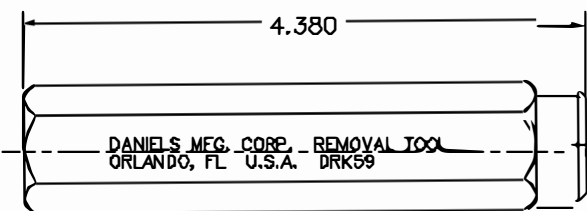
3697 - #16 PIN REMOVAL



3696 - #12 PIN REMOVAL



7/8 HEX



REVISIONS				
REV. STA.	ECO. NUMBER	DESCRIPTION	BY DATE	APP'D DATE
1		ORIGINAL RELEASE	DUNG CAD 8-7-96	DRK 8-8-96
2		REVISED PICTORIALY	JWJ 11-10-01	DRK 11-10-01

UNCONTROLLED DOCUMENT
WILL NOT BE UPDATED

RESTRICTED & CONFIDENTIAL


CONFIDENTIAL PROPERTY OF DANIELS MANUFACTURING CORP. NOT TO BE DISCLOSED TO OTHERS. REPRODUCED OR USED FOR ANY OTHER PURPOSE EXCEPT AS AUTHORIZED IN WRITING BY DANIELS MANUFACTURING. MUST BE RETURNED TO DANIELS MANUFACTURING CORP. ON COMPLETION OF ORDER OR OTHER PURPOSE FOR WHICH LENT.

DO NOT SCALE DRAWING

MATERIAL

HEAT TREAT

FINISH

ITEM	PART NO.	QTY.	DESCRIPTION/REMARKS
DRN	DUNG CAD	DATE 8-7-96	 DANIELS MANUFACTURING CORP. ORLANDO, FLORIDA CAGE 11651
CHK'D	DE	DATE 8-96	
APP'D.		DATE	TITLE REMOVAL TOOL ENVELOPE DRAWING
APP'D.		DATE	
NOTE:			WHERE USED:
THIS DRAWING IS AN OUTLINE DRAWING OF THE RESPECTIVE CNC PART NUMBER INDICATED. ACTUAL CNC PART NUMBER IS DRAWING NUMBER WITHOUT THE "-ENV" SUFFIX.			SIZE: B FULL SCALE: FULL CAD P/N: DRK59-ENV SHEET OF 11 POSTING: DRK59-ENV REV. 2

X-ON Electronics

Largest Supplier of Electrical and Electronic Components

Click to view similar products for [Extraction, Removal & Insertion Tools](#) category:

Click to view products by [DMC](#) manufacturer:

Other Similar products are found below :

[M8196914-08](#) [768211-2](#) [809-131](#) [844751-2](#) [8-59558-2](#) [91018-1](#) [12014013](#) [12093647](#) [1-21048-0](#) [R282867020](#) [12093078](#) [1-21048-6](#)
[12121897](#) [DCF.91.405.5LT](#) [1322](#) [15314260](#) [15350698](#) [15350707](#) [15430130](#) [1579018-4](#) [1643916-1](#) [1-679532-0](#) [1976593-3](#) [OUTEXT-0321](#)
[2-1579008-3](#) [2-1579008-4](#) [229694-7](#) [231106-1](#) [241469](#) [91040-3](#) [91040-7](#) [965004-000](#) [965069-000](#) [1738219-1](#) [ET-JL05-16](#) [FG 0300 146](#)
[3000](#) [FIT-6](#) [210S048](#) [2-1579007-9](#) [231879-1](#) [312138-3](#) [RJ11FODE](#) [356-162](#) [M8196914-10](#) [4-1579018-0](#) [430395-001](#) [483249-1](#) [5-](#)
[1579007-2](#) [5-1579007-9](#) [BPR10](#)