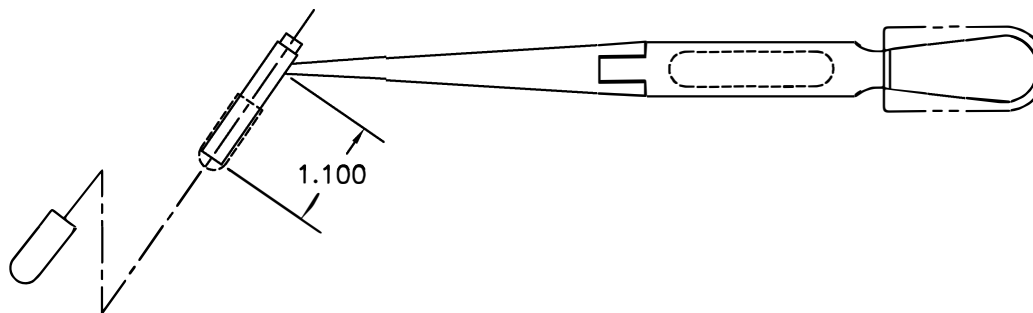
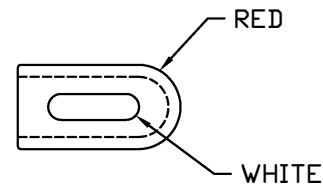
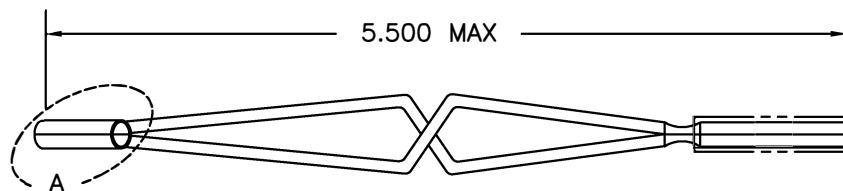
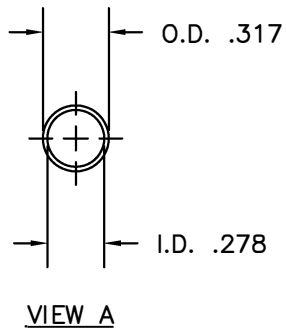


REVISIONS				
REV. SYM.	E.C.O. NUMBER	DESCRIPTION	BY DATE	APP'D DATE
1		ORIGINAL RELEASE	DUNG CAO 8-9-95	DE 8-95



**UNCONTROLLED DOCUMENT  
WILL NOT BE UPDATED**

<b>RESTRICTED &amp; CONFIDENTIAL</b>		MATERIAL		ITEM	PART NO.	QTY.	DESCRIPTION/REMARKS																
CONFIDENTIAL PROPERTY OF DANIELS MANUFACTURING CORP. NOT TO BE DISCLOSED TO OTHERS, REPRODUCED OR USED FOR ANY OTHER PURPOSE, EXCEPT AS AUTHORIZED IN WRITING BY DANIELS MANUFACTURING. MUST BE RETURNED TO DANIELS MANUFACTURING CORP. ON COMPLETION OF ORDER OR OTHER PURPOSE FOR WHICH LENT.		HEAT TREAT		DRN.	DUNG CAO	DATE	8-18-95																
				CHK'D.	DE	DATE	8-95																
				APP'D.		DATE																	
DO NOT SCALE DRAWING		FINISH		APP'D.		DATE																	
				NOTE: THIS DRAWING IS AN OUTLINE DRAWING OF THE RESPECTIVE DMC PART NUMBER INDICATED. ACTUAL DMC PART NUMBER IS DRAWING NUMBER WITHOUT THE *-ENV* SUFFIX.																			
				<table border="1"> <tr> <td>SIZE</td> <td>SCALE</td> <td>CAD P/N</td> <td>SHEET</td> <td>OF</td> </tr> <tr> <td>B</td> <td>NTS</td> <td>DRK95-8B-ENV</td> <td>1</td> <td>1</td> </tr> <tr> <td colspan="2">POSTING</td> <td>DWG. NO.</td> <td colspan="2">REV.</td> </tr> <tr> <td colspan="2"></td> <td>DRK95-8B-ENV</td> <td colspan="2">1</td> </tr> </table>				SIZE	SCALE	CAD P/N	SHEET	OF	B	NTS	DRK95-8B-ENV	1	1	POSTING		DWG. NO.	REV.		
SIZE	SCALE	CAD P/N	SHEET	OF																			
B	NTS	DRK95-8B-ENV	1	1																			
POSTING		DWG. NO.	REV.																				
		DRK95-8B-ENV	1																				
				<b>DMC</b> DANIELS MANUFACTURING CORP. ORLANDO, FLORIDA CAGE 11851																			
				TITLE: REMOVAL TOOL ENVELOPE DRAWING (SERIES 1) WHERE USED: M81989/8B-12																			

## X-ON Electronics

Largest Supplier of Electrical and Electronic Components

*Click to view similar products for [Pliers & Tweezers](#) category:*

*Click to view products by [DMC](#) manufacturer:*

Other Similar products are found below :

[0031](#) [32750](#) [PN-5050/38D](#) [PG-TP-30D](#) [PG-DP-18-N](#) [G77015](#) [4-1532129-2](#) [77 12 115](#) [0037](#) [T0058765801](#) [571](#) [76C](#) [MICROFOX-SP-1\\_DB](#)  
[37 31 125](#) [RX 8130](#) [37 33 125](#) [DRP10N](#) [32 11 135](#) [36 12 130](#) [0036](#) [0032](#) [HT-109](#) [6211-06](#) [6214-45](#) [6217-05](#) [6231-07](#) [6231-08](#) [6411-06](#)  
[DP15N](#) [DP20N](#) [PN 5050/10D](#) [PN 5050/19D](#) [PNI 5000](#) [TR 20 M](#) [TR 25 15](#) [TR 25 P A](#) [TR 30 58 R A](#) [TR 5000](#) [TR 5000 10 D](#) [TR 5000 PG](#)  
[TR 5000 PR](#) [MICROFOX-SP\\_DB](#) [CUTFOX-SE LM](#) [CUTFOX-SE LM\\_DB](#) [FMHT0-80519](#) [TR 58 R A](#) [43333](#) [102ACAX](#) [103ACA](#)  
[141SAP](#)