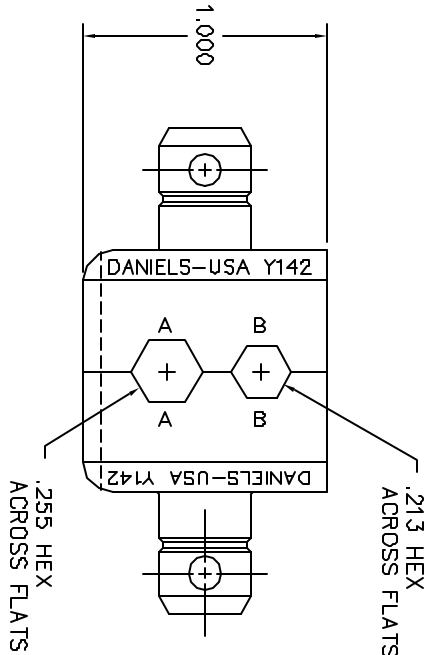
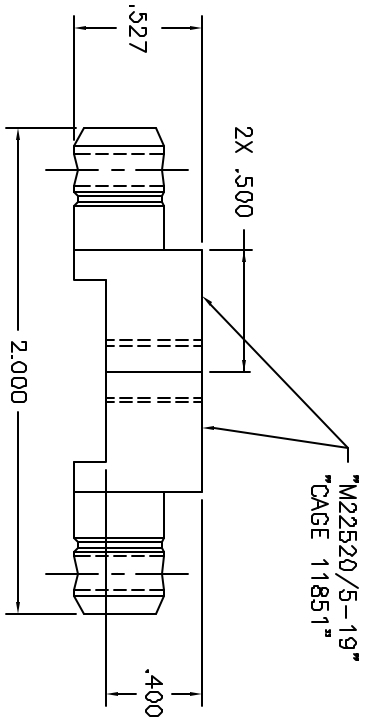


| REVISIONS | | | |
|-------------|------------------|---------|------------|
| REV. NUMBER | DESCRIPTION | BY DATE | APP'D DATE |
| 1 | ORIGINAL RELEASE | 3/25/99 | 3/25/99 |



**UNCONTROLLED DOCUMENT
WILL NOT BE UPDATED**

| RESTRICTED & CONFIDENTIAL | | MATERIAL | | ITEM | | PART NO. | | QTY. | | DESCRIPTION/REMARKS | |
|--|--|------------|--|--------------|--|---|--|--|--|---|--|
| MANUFACTURING FROM NOT TO BE REPRODUCED OR TRANSMITTED IN ANY FORM OR BY ANY MEANS, ELECTRONIC OR MECHANICAL, INCLUDING PHOTOCOPYING, RECORDING, OR BY ANY INFORMATION STORAGE AND RETRIEVAL SYSTEM, WITHOUT PERMISSION IN WRITING BY DANIELS MANUFACTURING. MUST BE RETURNED TO DANIELS MANUFACTURING WITH ORIGINAL ORDER NUMBER FOR WHICH ORDERED. | | HEAT TREAT | | DIN J. JOYCE | | DATE SCALE | | TITLE | | DIE SET ENVELOPE DRAWING M22520/5-19 DANIELS MANUFACTURING CORP. ORLANDO, FLORIDA CAGE 11851 | |
| | | FINISH | | RRR | | DATE SCALE | | WHERE USED: | | | |
| DO NOT SCALE DRAWING | | | | APPRO. DATE | | NOTE: | | SCALE | | SHEET 1 OF 1 | |
| | | | | | | THIS DRAWING IS AN ORIGINAL DRAWING OF THE RESPECTIVE PART NUMBER IS DRAWING THE "-ENV" SUFFIX. | | INDICATED ACTUAL DIM PART NUMBER IS DRAWING THE "-ENV" SUFFIX. | | REV 1 | |

X-ON Electronics

Largest Supplier of Electrical and Electronic Components

Click to view similar products for [Crimpers / Crimping Tools](#) category:

Click to view products by [DMC](#) manufacturer:

Other Similar products are found below :

[010-0096](#) [M225201-06](#) [M225202-37](#) [6-1579015-5](#) [CT150-6-RH07](#) [622-6441LF](#) [M322](#) [6-304052-1](#) [63456-0054](#) [63484-3701](#) [63800-8355](#)
[63819-1875](#) [63819-2875](#) [63819-4475](#) [63827-5375](#) [64001-0975](#) [64001-4175](#) [64005-0175](#) [662903-2](#) [690602-6](#) [7-1579001-9](#) [7-23471-1](#)
[762637-1](#) [808714-1](#) [811242-5](#) [999-50-020083](#) [1-21002-3](#) [1-21002-7](#) [12085270](#) [1-21002-6](#) [1-21113-6](#) [1-22548-4](#) [125442-1](#)
[DCE.91.073.BVC](#) [DCE.91.090.3MVM](#) [DCE.91.130.5MVU](#) [DCE.91.202.BVCM](#) [1338300-1](#) [1-354003-0](#) [1338301-1](#) [DF62/RE-MD](#) [142321](#)
[1456088-1](#) [1490794-1](#) [1-45804-6](#) [1490357-2](#) [1490357-3](#) [AX100749](#) [1-59619-7](#) [1596970-1](#)