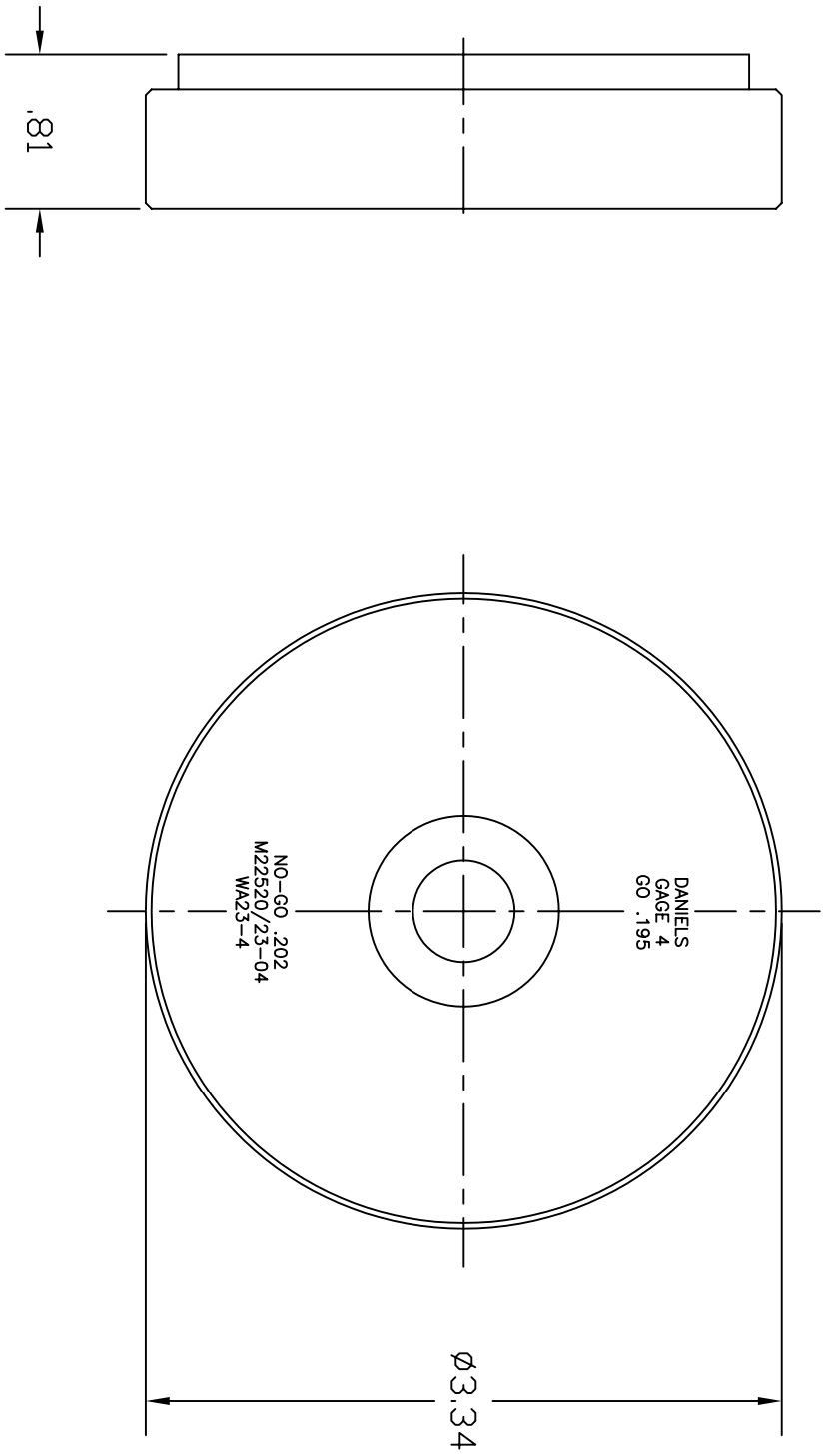


| REVISIONS | | BY | APPROVED |
|-----------|------------------|---------|----------|
| REV. | DESCRIPTION | DATE | DATE |
| 1 | ORIGINAL RELEASE | 4/25/00 | 4/25/00 |



UNCONTROLLED DOCUMENT
WILL NOT BE UPDATED

| | | | | | | | | | | | |
|---|--|------------|--|-----------------------|--|--------------|--|-----------------------------------|--|--|--|
| RESTRICTED & CONFIDENTIAL | | MATERIAL | | ITEM | | PART NO. | | QTY. | | DESCRIPTION/REMARKS | |
| CONFIDENTIAL PROPERTY OF DANIELS MANUFACTURING CORP. NOT TO BE REPRODUCED OR USED FOR ANY OTHER PURPOSE WITHOUT THE WRITTEN PERMISSION OF DANIELS MANUFACTURING CORP. MUST BE RETURNED TO DANIELS MANUFACTURING CORP. IF ORDER OR OTHER PURPOSE FOR WHICH LENT. | | HEAT TREAT | | DRG. J. JOYCE 4/25/00 | | DATE 4/25/00 | | DIE ASSY. SIZE 4 ENVELOPE DRAWING | | DANIELS MANUFACTURING CORP. OPAUKA, FLORIDA ONE 1181 | |
| FINISH | | APPRO. | | DATE | | DATE | | WHERE USED: | | CAD P/N | |
| DO NOT SCALE DRAWING | | DATE | | DATE | | DATE | | SCALE | | SHEET | |
| | | DATE | | DATE | | DATE | | NTS | | 1 | |
| | | DATE | | DATE | | DATE | | WA23-4-ENV | | 1 | |
| | | DATE | | DATE | | DATE | | WA23-4-ENV | | 1 | |

X-ON Electronics

Largest Supplier of Electrical and Electronic Components

Click to view similar products for [Crimpers / Crimping Tools](#) category:

Click to view products by [DMC](#) manufacturer:

Other Similar products are found below :

[010-0096](#) [M225201-06](#) [M225202-37](#) [6-1579015-5](#) [CT150-6-RH07](#) [622-6441LF](#) [M322](#) [6-304052-1](#) [63456-0054](#) [63484-3701](#) [63800-8355](#)
[63819-1875](#) [63819-2875](#) [63819-4475](#) [63823-3475](#) [63827-5375](#) [64001-0975](#) [64001-4175](#) [64005-0175](#) [662903-2](#) [690602-6](#) [7-1579001-9](#) [7-](#)
[23471-1](#) [762637-1](#) [808714-1](#) [811242-5](#) [999-50-020083](#) [1-21002-3](#) [1-21002-7](#) [12085270](#) [1-21002-6](#) [1-21113-6](#) [1-22548-4](#) [125442-1](#)
[DCE.91.073.BVC](#) [DCE.91.090.3MVM](#) [DCE.91.130.5MVU](#) [DCE.91.202.BVCM](#) [1338300-1](#) [1-354003-0](#) [1338301-1](#) [DF62/RE-MD](#) [142321](#)
[1456088-1](#) [1490794-1](#) [1-45804-6](#) [1490357-2](#) [1490357-3](#) [AX100749](#) [1-59619-7](#)