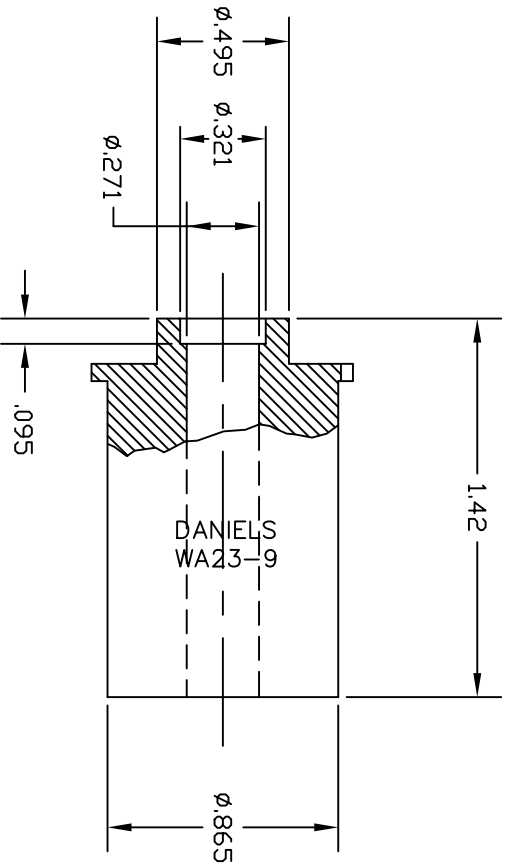
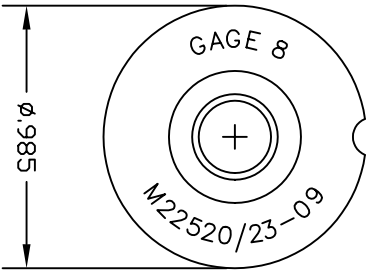


REVISIONS			
REV. SYM.	E.C.O. NUMBER	DESCRIPTION	BY DATE
1		ORIGINAL RELEASE	JMU 2/22/00 RRR 2/22/00



**UNCONTROLLED DOCUMENT
WILL NOT BE UPDATED**

<p style="text-align: center;">RESTRICTED & CONFIDENTIAL</p> <p style="text-align: center; font-size: small;">CONFIDENTIAL PROPERTY OF DANIELS MANUFACTURING CORP. NOT TO BE DISCLOSED TO OTHERS, REPRODUCED OR USED FOR ANY OTHER PURPOSE, EXCEPT AS AUTHORIZED IN WRITING, BY DANIELS MANUFACTURING. MUST BE RETURNED TO DANIELS MANUFACTURING CORP. ON COMPLETION OF ORDER OR OTHER PURPOSE FOR WHICH SENT.</p>		MATERIAL		FINISH		HEAT TREAT	
		DO NOT SCALE DRAWING					
ITEM	PART NO.	QTY.	DESCRIPTION/REMARKS				
DRG. J. JOYCE	DATE 2/22/00		<p style="text-align: center;">DANIELS MANUFACTURING CORP. ORLANDO, FLORIDA CAGE 11851</p> <p style="text-align: center;">LOCATOR ENVELOPE DRAWING</p>				
CHK'D. RRR	DATE 2/22/00						
APP'D.	DATE						
<p>NOTE: THIS DRAWING IS AN OUTLINE DRAWING OF THE RESPECTIVE MANUFACTURING PART NUMBER INDICATED. THE DRAWING PART NUMBER IS DRAWING NUMBER WITHOUT THE "-ENV" SUFFIX.</p>							
WHERE USED:		SCALE	CAD P/N	SHEET	OF	REV.	
		B 2X	WA23-9-ENV	1	1	1	
			WA23-9-ENV				

X-ON Electronics

Largest Supplier of Electrical and Electronic Components

Click to view similar products for [Crimpers / Crimping Tools](#) category:

Click to view products by [DMC](#) manufacturer:

Other Similar products are found below :

[010-0096](#) [M225201-06](#) [M225202-37](#) [6-1579015-5](#) [CT150-6-RH07](#) [622-6441LF](#) [M322](#) [6-304052-1](#) [63456-0054](#) [63484-3701](#) [63800-8355](#)
[63819-1875](#) [63819-2875](#) [63819-4475](#) [63823-3475](#) [63827-5375](#) [64001-0975](#) [64001-4175](#) [64005-0175](#) [662903-2](#) [690602-6](#) [7-1579001-9](#) [7-](#)
[23471-1](#) [762637-1](#) [808714-1](#) [811242-5](#) [999-50-020083](#) [1-21002-3](#) [1-21002-7](#) [12085270](#) [1-21002-6](#) [1-21113-6](#) [1-22548-4](#) [125442-1](#)
[DCE.91.073.BVC](#) [DCE.91.090.3MVM](#) [DCE.91.130.5MVU](#) [DCE.91.202.BVCM](#) [1338300-1](#) [1-354003-0](#) [1338301-1](#) [DF62/RE-MD](#) [142321](#)
[1456088-1](#) [1490794-1](#) [1-45804-6](#) [1490357-2](#) [1490357-3](#) [AX100749](#) [1-59619-7](#)