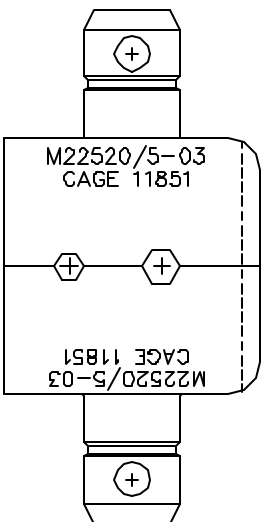
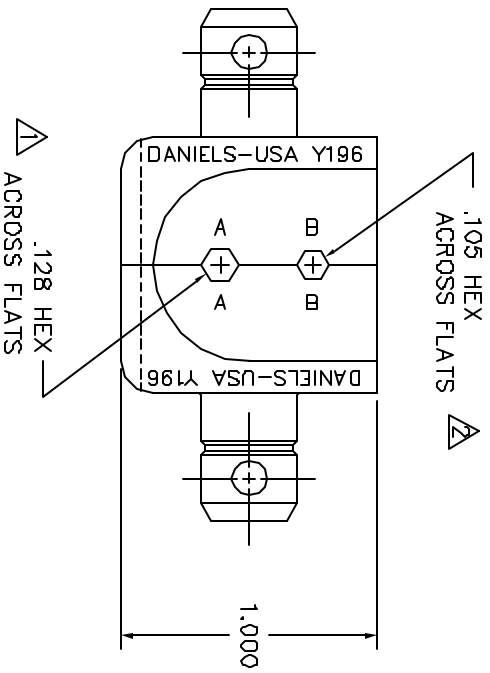
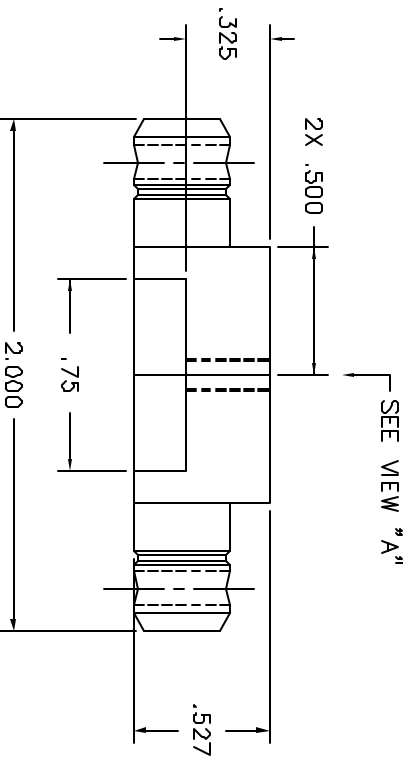


REVISIONS				
REV. NUMBER	ECO. NUMBER	DESCRIPTION	BY DATE	APP'D DATE
1		ORIGINAL RELEASE	9/15/98	9/5/98



**UNCONTROLLED DOCUMENT  
WILL NOT BE UPDATED**

**RESTRICTED & CONFIDENTIAL**  
 CONFIDENTIAL PROPERTY OF DANIELS  
 MANUFACTURING CORP. THIS DOCUMENT IS  
 DISCLOSED TO OTHERS, REPRODUCED  
 OR USED FOR ANY OTHER PURPOSE,  
 EXCEPT AS AUTHORIZED IN WRITING,  
 BY DANIELS MANUFACTURING  
 MUST BE RETURNED TO DANIELS  
 MANUFACTURING CORP. ON COMPLETION  
 OF ORDER OR OTHER PURPOSE FOR  
 WHICH ORDERED.

DO NOT SCALE DRAWING

MATERIAL		ITEM		PART NO.		QTY.		DESCRIPTION/REMARKS	
HEAT TREAT		DRN. J. JOYCE	DATE 9/12/98						
		CHRT. DE	DATE 9/28						
		APP'D	DATE						
		APP'D	DATE						
FINISH		TITLE		WHERE USED		SHEET OF		REV.	
		DIE SET		ENVELOPE DRAWING		1 OF 1		1	
		DANIELS MANUFACTURING CORP. DALLAS, TEXAS CAGE 11851		CAD P/N Y196-ENV				P/N Y196-ENV	
		ENVELOPE DRAWING (M22520/5-03)							

- △ USE GAGE G150.
  - △ USE GAGE G155.
- NOTES:

## X-ON Electronics

Largest Supplier of Electrical and Electronic Components

*Click to view similar products for [Crimpers / Crimping Tools](#) category:*

*Click to view products by [DMC](#) manufacturer:*

Other Similar products are found below :

[010-0096](#) [M225201-06](#) [M225202-37](#) [6-1579015-5](#) [CT150-6-RH07](#) [622-6441LF](#) [M322](#) [6-304052-1](#) [63456-0054](#) [63484-3701](#) [63800-8355](#)  
[63819-1875](#) [63819-2875](#) [63819-4475](#) [63827-5375](#) [64001-0975](#) [64001-4175](#) [64005-0175](#) [662903-2](#) [690602-6](#) [7-1579001-9](#) [7-23471-1](#)  
[762637-1](#) [808714-1](#) [811242-5](#) [999-50-020083](#) [1-21002-3](#) [1-21002-7](#) [12085270](#) [1-21002-6](#) [1-21113-6](#) [1-22548-4](#) [125442-1](#)  
[DCE.91.073.BVC](#) [DCE.91.090.3MVM](#) [DCE.91.130.5MVU](#) [DCE.91.202.BVCM](#) [1338300-1](#) [1-354003-0](#) [1338301-1](#) [DF62/RE-MD](#) [142321](#)  
[1456088-1](#) [1490794-1](#) [1-45804-6](#) [1490357-2](#) [1490357-3](#) [AX100749](#) [1-59619-7](#) [1596970-1](#)