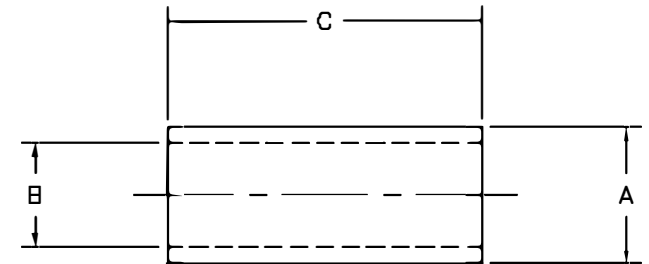
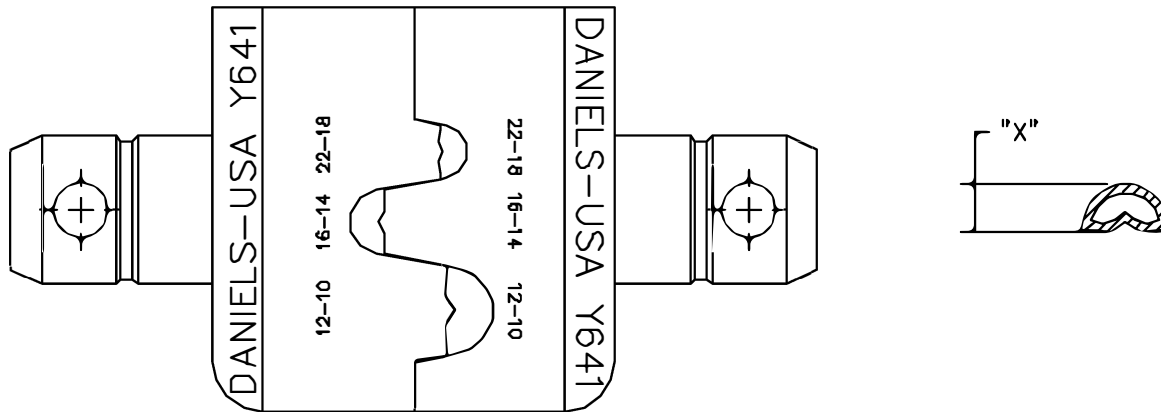


REVISIONS				
REV. SYM.	E.C.D. NUMBER	DESCRIPTION	BY DATE	APP'D DATE
1		ORIGINAL RELEASE	T.STANFILL 10-12-88	D.HENDERSON 10-28-88
2		STAMPING: 16-14 WAS 12-10. & 22-18 WAS 12-10. ADDED ALUM. TUBING AND CHART	B.MOCLURE 7-20-89	DE 7-89

**UNCONTROLLED DOCUMENT
WILL NOT BE UPDATED**



GEN TECH/BOEING	A	B	C
NAS 1387-1	.151	.061	.312
NAS 1387-2	.175	.085	.312
NAS 1387-3	.226	.129	.344

NOTES:

INSPECTION PROCEDURE

1. CRIMP NAS 1387-1 SPLICE IN 22-18 CAVITY. OR ALUM. TUBING (SEE CHART)
2. CRIMP NAS 1387-2 SPLICE IN 16-14 CAVITY.
3. CRIMP NAS 1387-3 SPLICE IN 12-10 CAVITY.
4. MEASURE CRIMPED SPLICE ACROSS CRIMPED SURFACES WITH CALIPERS AS SHOWN (DIM "X"). DO NOT USE WIRE.
5. DIMENSION "X" MUST FALL WITHIN THE FOLLOWING LIMITS OR BE REJECTED:

22-18	.075/.069
16-14	.092/.086
12-10	.124/.118

RESTRICTED & CONFIDENTIAL	MATERIAL	ITEM	PART NO.	QTY.	DESCRIPTION/REMARKS
	HEAT TREAT	DRN.	T.STANFILL	DATE	DMC DANIELS MANUFACTURING CORP. ORLANDO, FLORIDA FSCM 11851
		CHK'D.	D.HENDERSON	DATE	
		APP'D.	W.PLYTER	DATE	
APP'D.		DATE			
CONFIDENTIAL PROPERTY OF DANIELS MANUFACTURING CORP. NOT TO BE DISCLOSED TO OTHERS, REPRODUCED OR USED FOR ANY OTHER PURPOSE, EXCEPT AS AUTHORIZED IN WRITING BY DANIELS MANUFACTURING. MUST BE RETURNED TO DANIELS MANUFACTURING CORP. ON COMPLETION OF ORDER OR OTHER PURPOSE FOR WHICH SENT.					TITLE
DO NOT SCALE DRAWING					DIE SET ENVELOPE DRAWING
					WHERE USED:
		SIZE	SCALE	GAD FILE NO	SHEET OF
		B	3X	Y641-ENV	1 1
		POSTING	P/N	Y641-ENV	REV.
					2

X-ON Electronics

Largest Supplier of Electrical and Electronic Components

Click to view similar products for [Crimpers / Crimping Tools](#) category:

Click to view products by [DMC](#) manufacturer:

Other Similar products are found below :

[010-0096](#) [M225201-06](#) [M225202-37](#) [6-1579015-5](#) [CT150-6-RH07](#) [622-6441LF](#) [M322](#) [6-304052-1](#) [63456-0054](#) [63484-3701](#) [63800-8355](#)
[63819-1875](#) [63819-2875](#) [63819-4475](#) [63823-3475](#) [63827-5375](#) [64001-0975](#) [64001-4175](#) [64005-0175](#) [662903-2](#) [690602-6](#) [7-1579001-9](#) [7-](#)
[23471-1](#) [762637-1](#) [808714-1](#) [811242-5](#) [999-50-020083](#) [1-21002-3](#) [1-21002-7](#) [12085270](#) [1-21002-6](#) [1-21113-6](#) [1-22548-4](#) [125442-1](#)
[DCE.91.073.BVC](#) [DCE.91.090.3MVM](#) [DCE.91.130.5MVU](#) [DCE.91.202.BVCM](#) [1338300-1](#) [1-354003-0](#) [1338301-1](#) [DF62/RE-MD](#) [142321](#)
[1456088-1](#) [1490794-1](#) [1-45804-6](#) [1490357-2](#) [1490357-3](#) [AX100749](#) [1-59619-7](#)