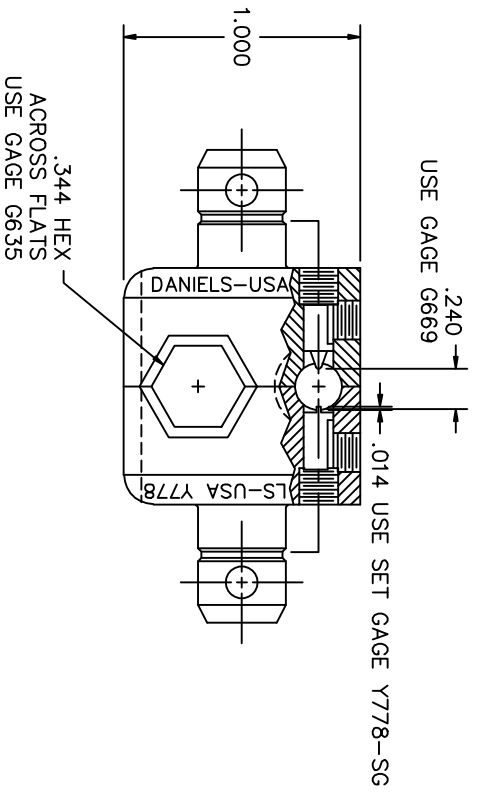
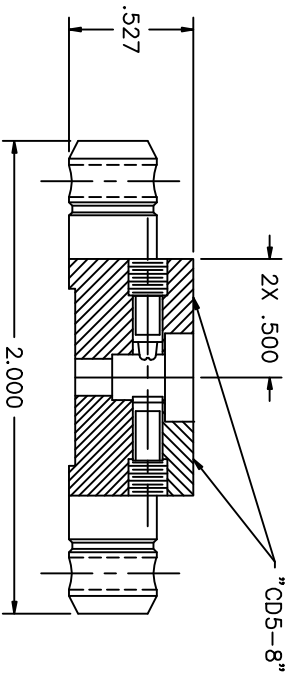


REVISIONS				
REV. SYM.	E.C.A. NUMBER	DESCRIPTION	BY DATE	APP'D DATE
5		ADDED SETTING	ENF 1-18-10	RRR 1-18-10



- TO SET DIE:
1. UNLOCK & BACK INDENTERS SLIGHTLY OUT OF THE CAVITY
 2. INSERT Y778-SG INTO HOLE FROM BACK SIDE OF DIE AS FAR AS IT WILL GO WITH THE SLOT ALIGNED WITH THE FLAT RECTANGULAR INDENTER
 3. ADJUST THE FLAT RECTANGULAR INDENTER UNTIL IT TOUCHES THE SET GAGE (PAY CLOSE ATTENTION TO LINE IT UP IN THE SLOT & DO NOT OVER TIGHTEN)
 4. ADJUST POINTED INDENTER UNTIL IT TOUCHES THE SET GAGE (DO NO OVER TIGHTEN)
 5. REMOVE Y778-SG
 6. VERIFY INDENTER GAGE WITH G669 AND ADJUST POINTED INDENTER IF NEEDED

**UNCONTROLLED DOCUMENT
WILL NOT BE UPDATED**

RESTRICTED & CONFIDENTIAL		MATERIAL		ITEM		PART NO.		QTY.		DESCRIPTION/REMARKS	
CONFIDENTIAL PROPERTY OF DANIELS MANUFACTURING CORP. NOT TO BE DISCLOSED TO OTHERS, REPRODUCED OR TRANSMITTED IN ANY FORM OR BY ANY MEANS, ELECTRONIC OR MECHANICAL, INCLUDING PHOTOCOPYING, RECORDING, OR BY ANY INFORMATION STORAGE AND RETRIEVAL SYSTEM, WITHOUT THE WRITTEN PERMISSION OF DANIELS MANUFACTURING CORP. THIS DOCUMENT IS THE PROPERTY OF DANIELS MANUFACTURING CORP. IT IS TO BE USED ONLY FOR THE PURPOSE FOR WHICH IT WAS ISSUED.		HEAT TREAT		DRG. I, STANFILL	DATE 8-2-88						
		FINISH		CHKD. DH	DATE 9-8-88						
DO NOT SCALE DRAWING				APPR. AAM	DATE 9-8-88						
NOTE: THIS DRAWING IS AN OUTLINE DRAWING OF THE RESPECTIVE INDICATED. ACTUAL DIMS MAY VARY FROM THE DIMS INDICATED WITHOUT THE "-ENV" SUFFIX.		WHERE USED: SIZE SCALE B 2X		CAD P/N Y778-ENV		SHEET 1 OF 1		DMC. NO. Y778-ENV		REV. 5	
				DMC DANIELS MANUFACTURING CORP. ORLANDO, FLORIDA GAGE 11851		TITLE DIE SET ENVELOPE DRAWING (CD5-8)					

X-ON Electronics

Largest Supplier of Electrical and Electronic Components

Click to view similar products for [Crimpers / Crimping Tools](#) category:

Click to view products by [DMC](#) manufacturer:

Other Similar products are found below :

[010-0096](#) [M225201-06](#) [M225202-37](#) [6-1579015-5](#) [CT150-6-RH07](#) [622-6441LF](#) [M322](#) [6-304052-1](#) [63456-0054](#) [63484-3701](#) [63800-8355](#)
[63819-1875](#) [63819-2875](#) [63819-4475](#) [63823-3475](#) [63827-5375](#) [64001-0975](#) [64001-4175](#) [64005-0175](#) [662903-2](#) [690602-6](#) [7-1579001-9](#) [7-](#)
[23471-1](#) [762637-1](#) [808714-1](#) [811242-5](#) [999-50-020083](#) [1-21002-3](#) [1-21002-7](#) [12085270](#) [1-21002-6](#) [1-21113-6](#) [1-22548-4](#) [125442-1](#)
[DCE.91.073.BVC](#) [DCE.91.090.3MVM](#) [DCE.91.130.5MVU](#) [DCE.91.202.BVCM](#) [1338300-1](#) [1-354003-0](#) [1338301-1](#) [DF62/RE-MD](#) [142321](#)
[1456088-1](#) [1490794-1](#) [1-45804-6](#) [1490357-2](#) [1490357-3](#) [AX100749](#) [1-59619-7](#)