

# SD103AWS

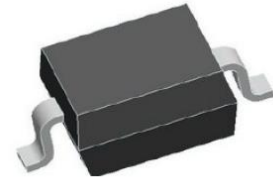
## SD103AWS Schottky Barrier Diode

### General description

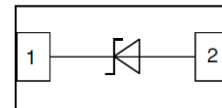
200mW SOD-323 SURFACE MOUNT  
Very Small Outline Flat Lead Plastic Package

### FEATURES

- Low Forward Voltage Drop
- Flat Lead SOD-323 Small Outline Plastic Package
- Surface Device Type Mounting
- RoHS Compliant
- Green EMC
- Matte Tin(Sn) Lead Finish
- Band Indicates Cathode



SOD-323 Package



### Absolute Maximum Ratings T<sub>A</sub> = 25°C unless otherwise noted

| Symbol             | Parameter                               | Value       | Units |
|--------------------|---|-------------|-------|
| P <sub>D</sub>     | Power Dissipation                       | 200         | mW    |
| T <sub>STG</sub>   | Storage Temperature Range               | -65 to +125 | °C    |
| T <sub>J</sub>     | Operating Junction Temperature          | +125        | °C    |
| V <sub>RM</sub>    | Repetitive Peak Reverse Voltage         | 40          | V     |
| I <sub>F(AV)</sub> | Average Forward Rectified Current       | 200         | mA    |
| I <sub>FSM</sub>   | Peak Forward Surge Current (10 uS Wave) | 2           | A     |

### Device Marking Code:

| Device Type | Device Marking |
|-------------|----------------|
| SD103AWS    | S4 or JV       |

### Electrical Characteristics T<sub>A</sub> = 25°C unless otherwise noted

| Symbol         | Parameter               | Test Condition                                | Limits |     |              | Unit  |
|----------------|-------------------------|---|--------|-----|--------------|-------|
|                |                         |   | Min    | Typ | Max          |       |
| I <sub>R</sub> | Reverse Leakage Current | V <sub>R</sub> =30V                           | ---    | --- | 5            | μA    |
| V <sub>F</sub> | Forward Voltage         | I <sub>F</sub> =20mA<br>I <sub>F</sub> =200mA | ---    | --- | 0.37<br>0.60 | Volts |
| C <sub>t</sub> | Junction Capacitance    | V <sub>R</sub> =0V f= 1MHz                    | ---    | 50  | ---          | pF    |

## Typical Characteristics

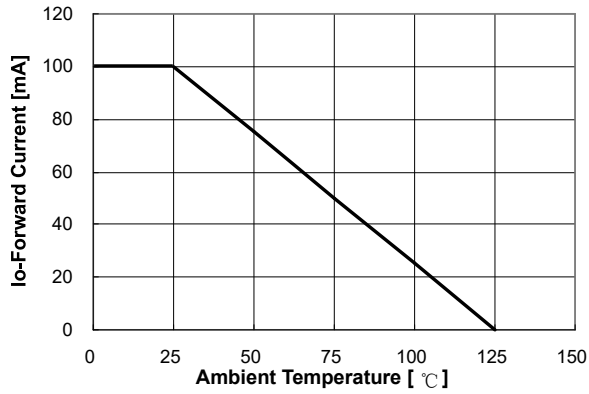


Figure 1. Forward Current Derating Curve

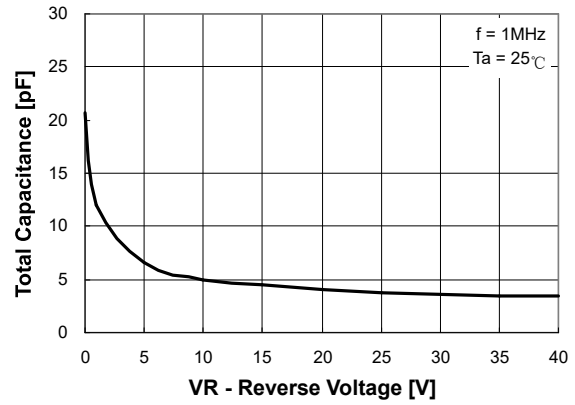


Figure 2. Total Capacitance

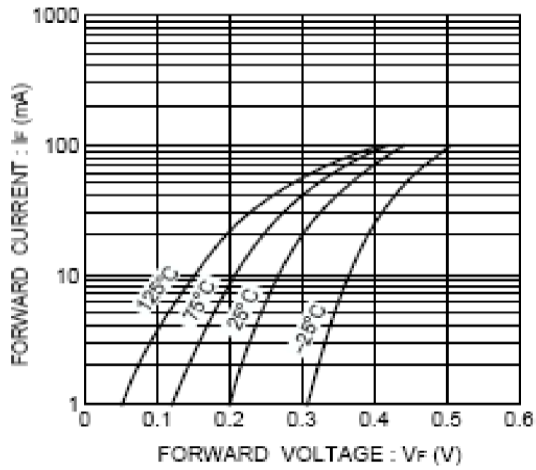


Figure 3. Forward Characteristics

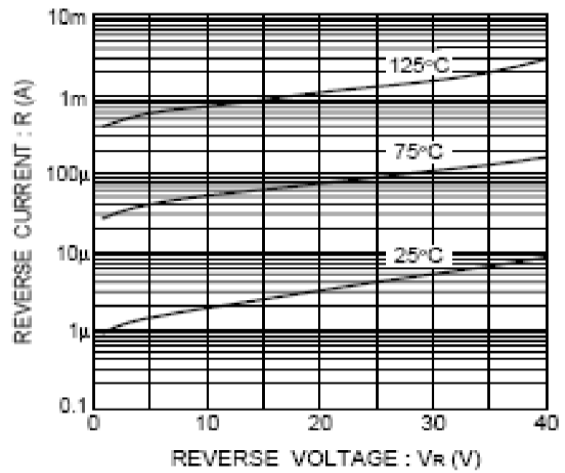
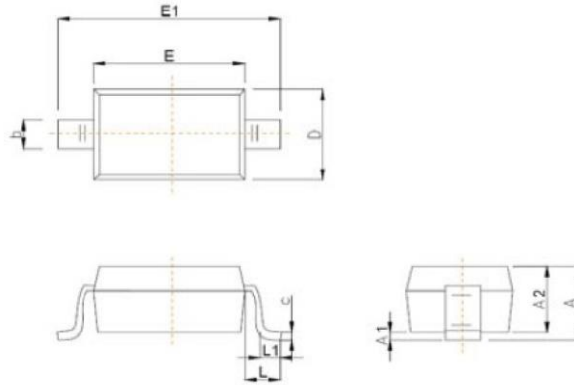


Figure 4. Reverse Characteristics

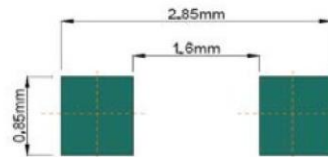
**Note:** Dimensions are exclusive of Burrs, Mold Flash & Tie Bar extrusions.

# SD103AWS

## SOD-323 PACKAGE OUTLINE DIMENSIONS



| Symbol | Dimensions In Millimeters |       |
|--------|---------------------------|-------|
|        | Min                       | Max   |
| A      |                           | 1.00  |
| A1     | 0.000                     | 0.100 |
| A2     | 0.800                     | 0.900 |
| b      | 0.250                     | 0.350 |
| c      | 0.080                     | 0.150 |
| D      | 1.200                     | 1.400 |
| E      | 1.600                     | 1.800 |
| E1     | 2.500                     | 2.700 |
| e      | 1.800                     | 2.040 |
| L      | 0.475 REF                 |       |
| L1     | 0.250                     | 0.400 |
| θ      | 0°                        | 8°    |



**Recommended Pad outline**

## Important Notice and Disclaimer

DOESHARE has used reasonable care in preparing the information included in this document, but DOESHARE does not warrant that such information is error free. DOESHARE assumes no liability whatsoever for any damages incurred by you resulting from errors in or omissions from the information included herein.

DOESHARE no warranty, representation or guarantee regarding the documents, circuits and products specification, DOESHARE reservation rights to make changes for any documents, products, circuits and specifications at any time without notice.

Purchasers are solely responsible for the choice, selection and use of the DOESHARE products and services described herein, and DOESHARE assumes no liability whatsoever relating to the choice, selection or use of the products and services described herein.

No license, express or implied, by implication or otherwise under any intellectual property rights of DOESHARE.

Resale of DOESHARE products with provisions different from the statements and/or technical features set forth in this document shall immediately void any warranty granted by DOESHARE for the DOESHARE product or service described herein and shall not create or extend in any manner whatsoever, any liability of DOESHARE.

## X-ON Electronics

Largest Supplier of Electrical and Electronic Components

*Click to view similar products for [Schottky Diodes & Rectifiers](#) category:*

*Click to view products by [Doeshare](#) manufacturer:*

Other Similar products are found below :

[MA4E2039](#) [MA4E2508M-1112](#) [MBR10100CT-BP](#) [MBR1545CT](#) [MMBD301M3T5G](#) [GS1JE-TP](#) [RB160M-50TR](#) [BAS16E6433HTMA1](#)  
[BAS 3010S-02LRH E6327](#) [BAT 54-02LRH E6327](#) [NSR05F40QNXT5G](#) [NSVR05F40NXT5G](#) [NTE555](#) [JANS1N6640](#) [SB07-03C-TB-H](#)  
[SK310-T](#) [SK33A-TP](#) [SK34B-TP](#) [SS3003CH-TL-E](#) [PDS3100Q-7](#) [GA01SHT18](#) [CRS10I30A\(TE85L,QM](#) [MA4E2501L-1290](#)  
[MBRB30H30CT-1G](#) [DMJ3940-000](#) [SB007-03C-TB-E](#) [SK32A-TP](#) [SK33B-TP](#) [SK35A-TP](#) [SK38B-LTP](#) [SK38B-TP](#) [NRVBM120LT1G](#)  
[NTE505](#) [NTSB30U100CT-1G](#) [VS-6CWQ10FNHM3](#) [CRG04\(T5L,TEMQ\)](#) [ACDBA1100LR-HF](#) [ACDBA1200-HF](#) [ACDBA2100-HF](#)  
[ACDBA240-HF](#) [ACDBA3100-HF](#) [CDBQC0530L-HF](#) [ACDBA260LR-HF](#) [ACDBA1100-HF](#) [MA4E2502L-1246](#) [10BQ060-M3/5BT](#)  
[NRVB130LSFT1G](#) [CRS08TE85LQM](#) [PMAD1108-LF](#) [B120Q-13-F](#)