

EK-915-SR Test Antenna

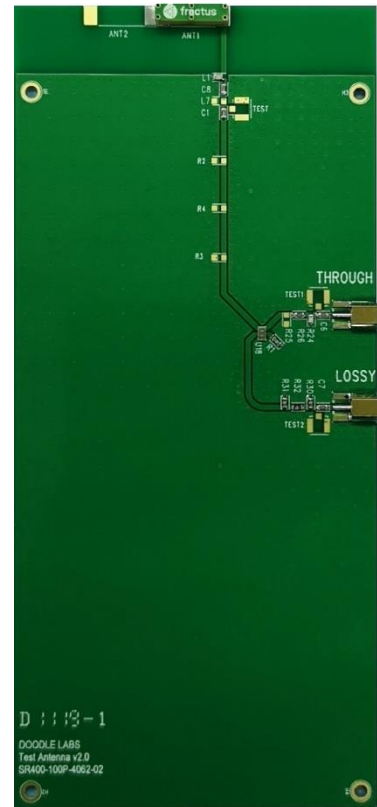
Overview

The Doodle Labs EK-915-SR Test Antenna is designed to simplify bench testing of Doodle Labs RM-915-2H series Smart Radios. The main radiating element is a Fractus FR01-S4-224 SMT antenna which has been tuned to provide a 50-ohm match in the 902-928 MHz ISM Band. Detailed technical information can be found on the manufacturer’s webpage.

The EK-915-SR Test Antenna includes two ports, only one of which should be connected at a time. The THROUGH port is for short range measurements and the LOSSY port is for bench measurements, for example for in-lab testing.

Technical Specifications

Frequency Range	902-928 MHz
Radiating Element Peak Gain	2.6 dBi
THROUGH board loss	1 dB
LOSSY board loss	14 dB
Impedance	50-ohm
VSWR (both ports)	< -14 dB typical
Dimensions	131mm x 60mm x 4mm



X-ON Electronics

Largest Supplier of Electrical and Electronic Components

Click to view similar products for [Sub-GHz Development Tools](#) category:

Click to view products by [Doodle Labs](#) manufacturer:

Other Similar products are found below :

[EVAL-ADF7021DBJZ](#) [EVAL-ADF7021-NDBZ2](#) [EVAL-ADF7021-VDB3Z](#) [EVAL-ADF7023DB3Z](#) [MICRF219A-433 EV](#) [MICRF220-433 EV](#) [AD6679-500EBZ](#) [EVAL-ADF7901EBZ](#) [EVAL-ADF790XEBZ](#) [110976-HMC453QS16G](#) [STEVAL-IKR002V7D](#) [MAX2602EVKIT+](#) [MAX1472EVKIT-315](#) [MAX1479EVKIT-315](#) [STEVAL-IKR002V3D](#) [MAX7042EVKIT-315+](#) [MAX2902EVKIT#](#) [MAX9947EVKIT+](#) [MAX1470EVKIT-315](#) [SKY66188-11-EK1](#) [SKY66013-11-EVB](#) [EVAL-ADF7023DB5Z](#) [DRF1200/CLASS-E 1096](#) [1097](#) [1098](#) [MDEV-900-PRO](#) [DVK-SFUS-1-GEVK](#) [DVK-SFUS-API-1-GEVK](#) [US-SIGFOX-GEVB](#) [STEVAL-IKR002V2D](#) [107755-HMC454ST89](#) [DM182017-2](#) [110961-HMC453ST89](#) [DM182017-1](#) [3179](#) [DC689A](#) [DC1513B-AB](#) [3229](#) [3230](#) [3231](#) [3232](#) [DC1250A-AA](#) [DC1513B-AC](#) [DC1513B-AD](#) [DC1513B-AA](#) [TEL0075](#) [131903-HMC921LP4E](#) [EU-SIGFOX-GEVB](#) [856512-EVB](#)