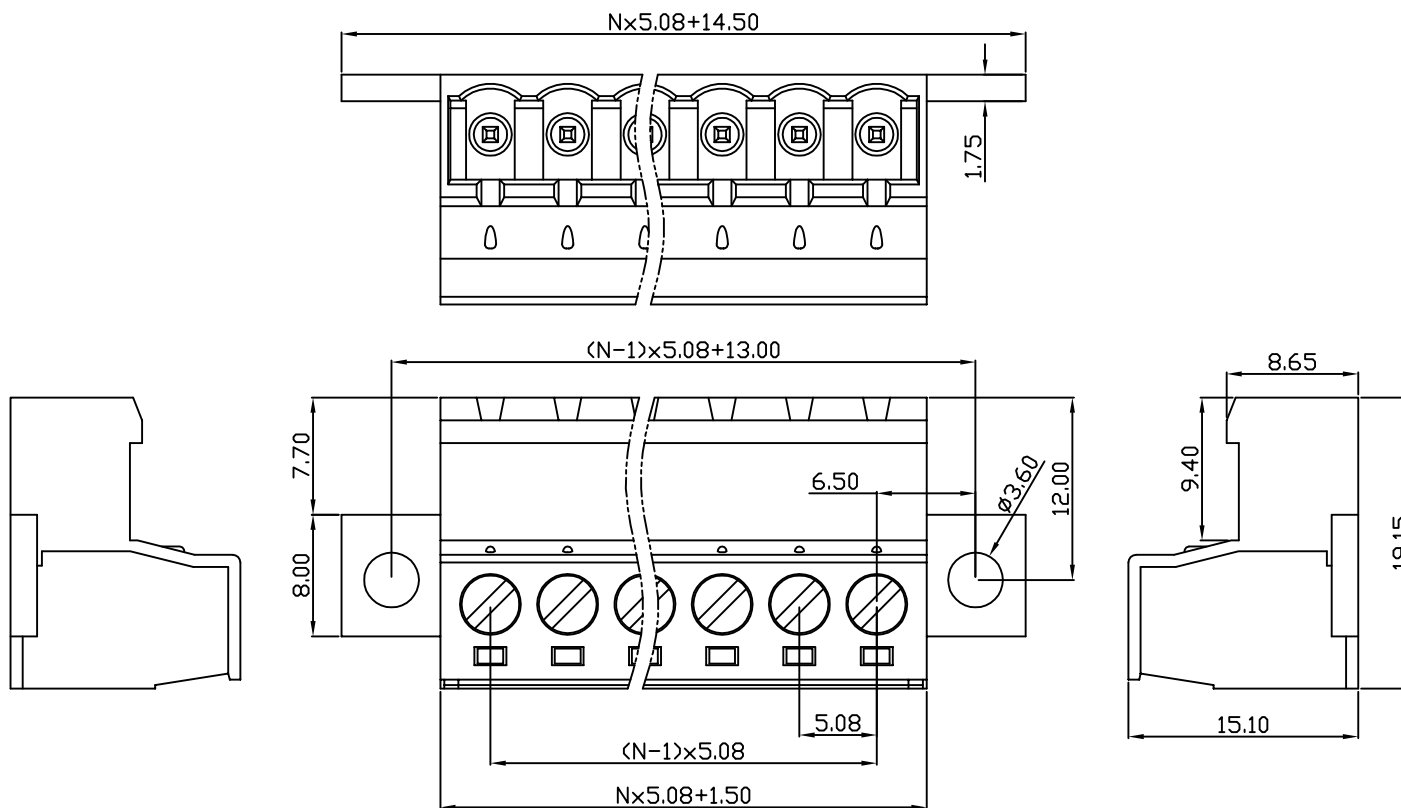


linear dimension(Tolerances Standard GB/T 14486-2008)								—	∇	\perp
variable range	to 6	over 6 to 10	over 10 to 30	over 30 to 60	over 60 to 100	over 100 to 160	over 160 to	to 10	over 10 to 100	over 100 to
tolerance	±0.20	±0.30	±0.50	±0.70	±1.00	±1.30	±1.60	0.10	0.30	0.60



UL/CUL 技术参数				UL/CUL Technical Data			cRUus		
等级	Use Group	B	C	D					
额定电压	Rated Voltage [V]	300	-	300					
额定电流	Rated Current [A]	15	-	10					
接线范围	Wire Range				28-12				
单/多芯线	Solid/Stranded [AWG]								
耐电压	Withstanding Voltage				1600V/1Min				
IEC 技术参数				IEC Technical Data					
过电压类别	Overvoltage Category	III	III	II					
污染等级	Contamination Class	3	2	2					
额定电压	Rated Voltage [V]	250	320	630					
额定电流	Rated Current [A]	12	12	12					
额定冲击电压	Impulse withstand voltagea [KV]	4	4	4					
导线截面积	Conductor cross section				2.5				
硬质/柔性导线	Solid/flexible [mm ²]								
材料				Material					
绝缘材料	Insulation Material				PA66				
阻燃等级	Imflamability				UL94V-0				
导体材料	Contacto Material				铜合金 Copper alloy				
导体表面镀层	Contactive Coating				镀锡 Sn Plated				
一般参数				Other Data					
间距	Pitch [mm]				5.08				
极数	Poles [P]				02-24				
剥线长度	Stripping Length [mm]				7-8				
螺丝	Screw/扭矩 Torque(Max) [N.m]				M3/0.5				
工作温度	Operating temperatur [°C]				-40~+105				
引针尺寸	Pin Dimensions [mm]				-				
PCB板孔径	PCB Hole Diameter [mm]				-				

DB2EKRN — 5.08 — XXP — C — S/P

(Series No.) (Pitch) (Poles)

(Color) : 1.(Green) 2.(Black) 3.(Blue) 4.(Clear) 5.(Gray)
6.(Orange) 7.(Red) 8.(White) 9.(Yellow)

Slotted/Phillips

APPD: JTING Chen 2022.8.3
CHKD: Duck Mao 2022.8.3
DRFT: Steven Lu 2022.8.3

DORABO

宁波地博电气有限公司
Ningbo Dorabo Electric CO., Ltd

NAME:

DB2EKRN-5.08-XXP-C-S



SIZE: A4

mm
(inch)

REV

T0-1

TYPE: CUSTOMER_DRAWING

SCALE: 1:1

SHEET

1/1

X-ON Electronics

Largest Supplier of Electrical and Electronic Components

Click to view similar products for [Pluggable Terminal Blocks](#) category:

Click to view products by [DORABO](#) manufacturer:

Other Similar products are found below :

[57.510.0053](#) [721-104/026-047](#) [721-204/026-045](#) [MC 1.5/ 6-ST-3.5 GY AU](#) [ET02015000J0G](#) [860505](#) [860516](#) [860810](#) [GBPACX-12](#)
[93.731.4953.0](#) [PVP03-3,50](#) [PVS02-5,00](#) [1-1986160-3](#) [1377680000](#) [1531000000](#) [1546228-5](#) [ELFP03110](#) [ELFP10210](#) [ELFT07250](#)
[ELVD12100](#) [ELVF09400](#) [ELXH071G0E](#) [1725220000](#) [1760336](#) [1855000000](#) [19346](#) [1946309](#) [1973592](#) [19892](#) [25.320.4053.1](#) [25.320.4553.9](#)
[25.320.4753.1](#) [25.320.5453.1](#) [25.340.0353.1](#) [25.340.1053.1](#) [25.345.3553.0M001](#) [25.640.3553.1](#) [SH02-5,08](#) [SH06-3,81](#) [SH08-5,08](#) [SH08-](#)
[5,08-K](#) [SH12-5,08](#) [SHS04-5,00](#) [30.303](#) [30.305](#) [30.306](#) [PHP09-5,08](#) [25.193.0453.0](#) [25.320.4653.1](#) [25.332.2453.1](#)