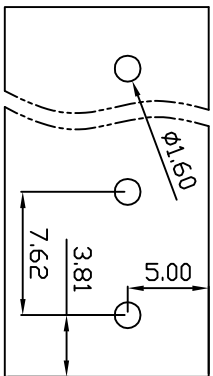
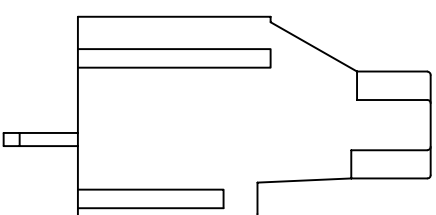
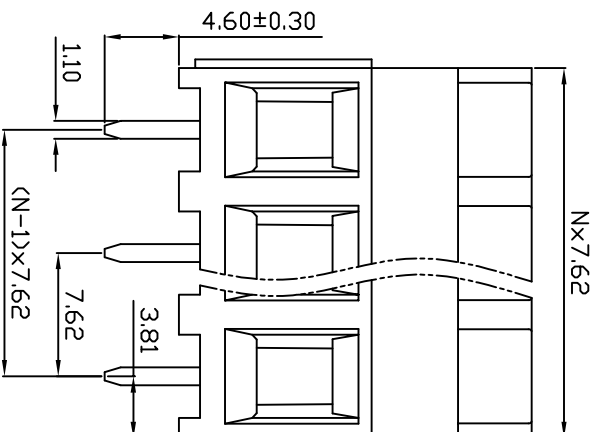
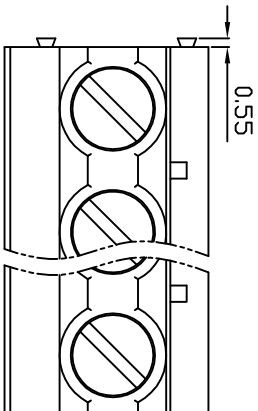
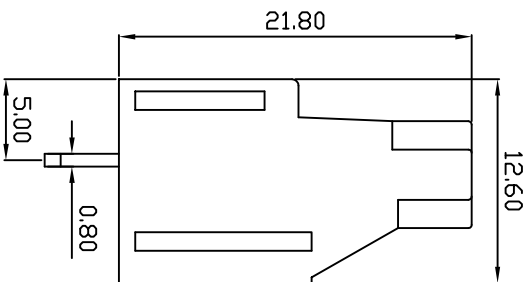


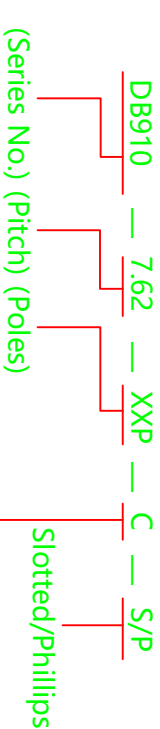
linear dimension(Tolerances Standard GB/T 14486-2008)										
variable range	6 to 6	over 10 to 10	over 30 to 30	over 60 to 60	over 100 to 100	over 160 to 160	to 10 to 10	over 10 to 10	over 100 to 100	
tolerance	±0.20	±0.30	±0.50	±0.70	±1.00	±1.30	±1.60	0.10	0.30	0.60



PCB Layout



UL/CUL 技术参数	UL/CUL Technical Data			cPA 1000		
等级	Use Group	B	C	D		
额定电压	Rated Voltage	[V]	300	-	300	
额定电流	Rated Current	[A]	30	-	10	
接线范围	Wire Range	[AWG]	26-10			
单/多芯线	Solid/Stranded	[AWG]				
耐电压	Withstanding Voltage		1600V/1Min			
IEC 技术参数						
IEC Technical Data						
过电压类别	Overvoltage Category	III	III	II		
污染等级	Contamination Class	3	2	2		
额定电压	Rated Voltage	[V]	500	630	1000	
额定电流	Rated Current	[A]	32	32	32	
额定冲击电压	Impulse withstand voltage	[kV]	6	6	6	
导线截面积	Conductor cross section		4			
硬质/柔性导线	Solid/ flexible	[mm ²]				
材料						
绝缘材料	Insulation Material	PA66				
阻燃等级	Inflammability	UL94V-0				
导体材料	Contact Material	铜合金 Copper alloy				
导体表面镀层	Contactive Coating	镀锡 Sn Plated				
一般参数						
间距	Pitch	[mm]	7.62			
极数	Poles	[P]	02-24			
剥线长度	Stripping Length	[mm]	7			
螺丝	Screw/扭矩	[N.m]	M3.0x5			
工作温度	Operating temperatur	[°C]	-40~+105			
引针尺寸	Pin Dimensions	[mm]	0.80x1.10			
PCB孔径	PCB Hole Diameter	[mm]	1.60			



(Color) : 1.(Green) 2.(Black) 3.(Blue) 4.(Clear) 5.(Gray) 6.(Orange) 7.(Red) 8.(White) 9.(Yellow)

APPD: Jiting Chen 2022.4.10

CHKD: Duck Mao 2022.4.10

DRFT: Steven Lu 2022.4.10

NAME:

DB910-7.62-XXP-C-S

DORABO

宁波地博电气有限公司
Ningbo Dorabo Electric CO., Ltd



SIZE: A4

mm
inch

REV TO-1

TYPE: CUSTOMER_DRAWING

SCALE: 1:1 SHEET 1/1

X-ON Electronics

Largest Supplier of Electrical and Electronic Components

Click to view similar products for [Fixed Terminal Blocks](#) category:

Click to view products by [DORABO](#) manufacturer:

Other Similar products are found below :

[MBE-1512](#) [MBE-1520](#) [MBE-154](#) [MBE-156](#) [MBES-156](#) [MH-2512](#) [MHE-132](#) [MHE-163](#) [MI-254 \(35\)](#) [MPT-275](#) [ELM10110G](#) [BA311TU](#)
[BA411SU](#) [MV-254-D](#) [MV-255](#) [MV-493](#) [MVE-252](#) [MVE-253](#) [MVEB-153](#) [1705142](#) [1-796689-8](#) [1841320000](#) [S451](#) [29.007](#) [29.116](#) [30.204](#)
[30.503](#) [30.756](#) [30.853](#) [9872-0-00-15-00-00-33-0](#) [996750](#) [1710052](#) [20020316-G071B01LF](#) [20020327-C061B01LF](#) [29590](#) [30.652](#) [30.710](#)
[30.754](#) [30.757](#) [32.058](#) [37.206](#) [37.208](#) [37.507](#) [37.558](#) [38331-5812](#) [38331-8018](#) [38540-1910](#) [39.002](#) [MBE-1517](#) [MBE-153](#)