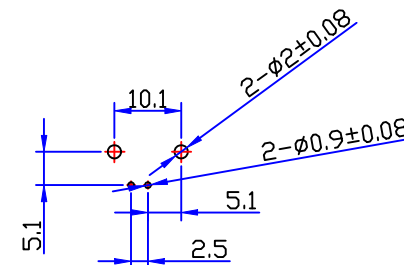
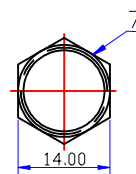
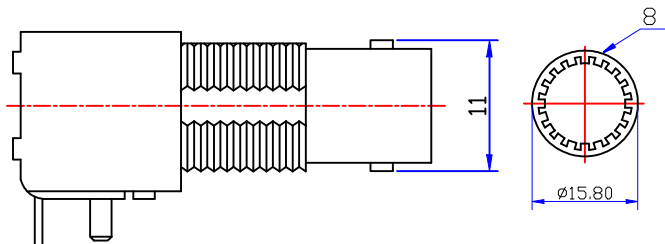
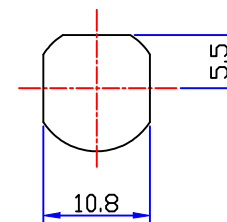
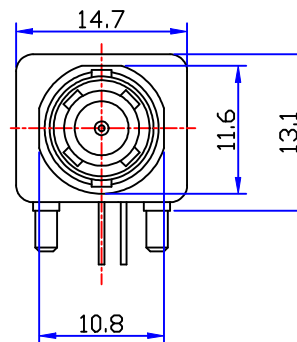
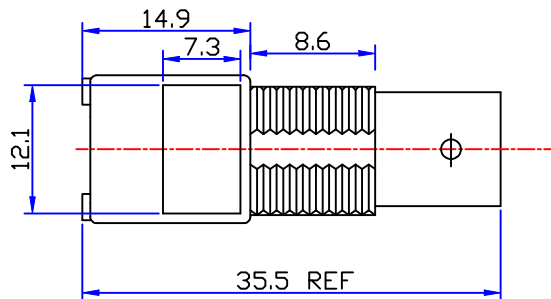
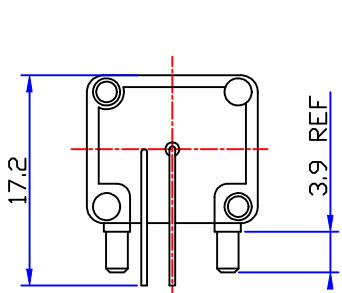




PART NO.		DOSIN-801-0030		
REV	DESCRIPTION	DWN	DATE	APPROVEN
A	First issue	Zelin.Zhang	12/04/13	John kine
B				



PCB HOLE CONFIGURATION
RECOMMENDED PANEL CUTOUTS

SPECIFICATIONS:

IMPEDANCE: 50 Ohms

FREQUENCY RANGE: DC~3G

VSWR: 1.3MAX

WORKING VOLTAGE: 500V rms @ sea level

INSULATION RESISTANCE: 5000 Ohms min

TEMPERATURE RANGE: -55°C TO +155°C

RELATIVE TEMPERATURE: ≤95% (40° C ± 2° C)

1	BY-00005-NI-0	Zinc	NI:80-120u"	2
2	PN-00008-GL-0	Brass	AU:1u"	2
3	TR-00018-NI-0	Iron	NI:80-120u"	1
4	TR-00019-NI-0	Iron	NI:80-120u"	2
5	IN-00008-0	POM	White	2
6	IN-00009-0	POM	White	2
7				
8				
9				
10				
NO	Component Number	Material	Finish	QTY

NOTE:	
DOSIN-7044SZ-	
750HM-DNN	
DRAWN	2012/04/
Zelin.Zhang	13
CHECKED	
APPROVALS	

Tolerance	X. +0.30
	X.X +0.20
	X.XX +0.10
View	
UNIT	MM
SCALE	1:1

DOSIN		Dosin Industrial(H.K)Co.Ltd		E-mail:dosin2005@163.com	
-REF CONNECTOR-		东莞市德索五金电子制品有限公司		dosin2005@dosing-china.com	
		Dosin Hardware Electronics Co.,Ltd		Web:http://www.china-guan.com	
				TEL:(0086)769-81153906	
				FAX:(0086)769-81875836	
Name: BNC Jack 90° PCB(13.1mm)					
SIZE	CABLE GROUP	DWG NO.			REV
A		DOSIN-801-0030			A
DateTime		CAD FILE		SHEET: 1 OF 1	
2012/04/13		D/公司图纸/业务图			

X-ON Electronics

Largest Supplier of Electrical and Electronic Components

Click to view similar products for [RF Connectors / Coaxial Connectors](#) category:

Click to view products by [dosinconn](#) manufacturer:

Other Similar products are found below :

[R125315120](#) [8915-1511-000](#) [89674-0827](#) [5916-1103-603](#) [0106-001-000](#) [6-0001-3](#) [6001-7071-019](#) [6002-7051-003](#) [6002-7551-202](#) [6059674-1](#) [619550-1](#) [630059-000](#) [M39012/25-0021](#) [M39012/79-3008](#) [M39030/3-01N](#) [M39030/3-03N](#) [M3933/25-29N](#) [M3933/25-36N](#) [6500-7071-046](#) [6501-1071-002](#) [M83723/72W24576](#) [M83723/72W2457N](#) [6769](#) [CX050L2AQ](#) [7002-1541-010](#) [7003-1572-002](#) [7004-1512-000](#) [7009-1511-004](#) [7010-1511-000](#) [7029-1511-060](#) [7101-1541-010](#) [7101-1571-002](#) [7105-1521-002](#) [7145-1521-002](#) [7209-1511-011](#) [7210-1511-012](#) [7210-1511-015](#) [7210-1511-019](#) [7210-1511-040](#) [7225-1512-050](#) [7242-1511-000](#) [73137-5015](#) [73251-0111](#) [73251-0672](#) [73276-1501](#) [73366-0013](#) [73404-2300](#) [73413-6080](#) [734151610](#) [73415-5721](#)