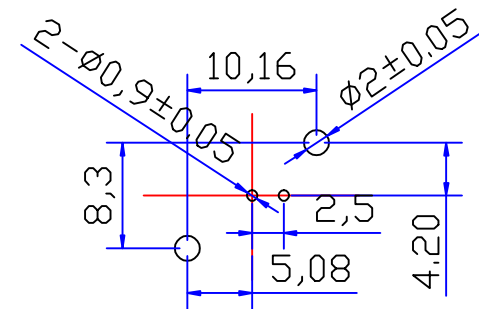
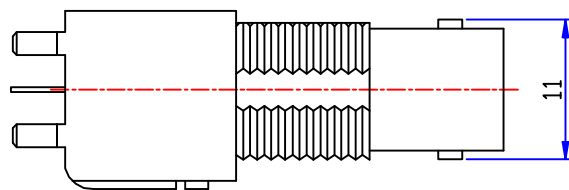
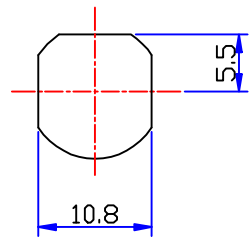
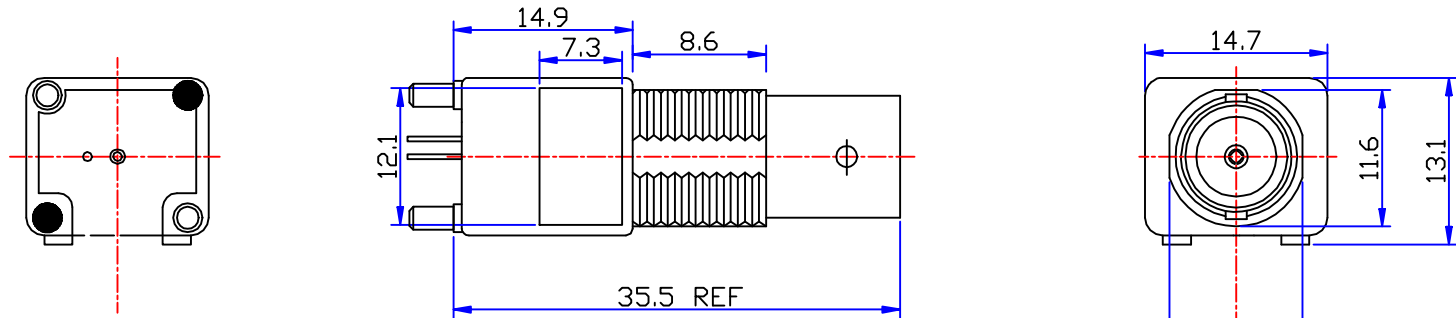




Product NO.		DOSIN-801-0033		
REV	DESCRIPTION	DWN	DATE	APPROVEN
A	First issue	Mr. CHEN	2015/05/19	John kine
B				



SPECIFICATIONS:

Impedance: 75 Ohms

Frequency Range: DC~3G

VSWR: 1.3max

Working Voltage: 500v RMS @ SEA level

Insulation Resistance: 5000 Ohms min

Temperature Range: -55°C TO +155°C

Drawings products are in line with ROHS standards

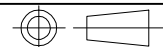
PCB HOLE CONFIGURATION
RECOMMENDED PANEL CUTOUTS

NOTE:

Tolerance

X ±0.15
X.X ±0.10
X.XX ±0.05
Angular ±5°

View



UNIT

MM

SCALE

1:1



Dosin Industrial (HK) Co., Ltd

东莞市德索五金电子有限公司

Dosin Hardware Electronics Co., Ltd

E-mail: dosin2005@163.com
dosin2005@dosin-china.com
Web: http://www.dosinconn.com
TEL: (0086) 769-81153906
FAX: (0086) 769-81875836

Name:

BNC JACK FOR PCB CONNECTOR

SIZE

Product NO.

DOSIN-801-0033

REV

A

Date/Time

2015/05/19

CAD FILE

H/company drawings/BD

SHEET: 1 OF 1

NO	DESCRIPTION	MATERIAL	FINISHED	QTY
5	LOCK WASHER	HEX NUT	BRASS	NICKEL
4	HEX NUT	BRASS	NICKEL	1
3	INSULATOR	PDM	NONE	1
2	CONTACT PLATING	BRASS	GOLD	1
1	BODY	ZINC	NICKEL	1

LOCK WASHER	BRASS	NICKEL
HEX NUT	BRASS	NICKEL
INSULATOR	PDM	NONE
CONTACT PLATING	BRASS	GOLD
BODY	ZINC	NICKEL

DRAWN
Zelin.Zhang

CHECKED

APPROVALS

X-ON Electronics

Largest Supplier of Electrical and Electronic Components

Click to view similar products for [RF Connectors / Coaxial Connectors](#) category:

Click to view products by [dosinconn](#) manufacturer:

Other Similar products are found below :

[8915-1511-000](#) [89674-0827](#) [6001-7071-019](#) [6002-7051-003](#) [6059674-1](#) [619550-1](#) [630059-000](#) [M39012/25-3026](#) [M39030/3-01N](#) [6501-1071-002](#) [6769](#) [7002-1541-010](#) [7002-1572-002](#) [7003-1542-011](#) [7004-1512-000](#) [7009-1511-004](#) [7029-1511-060](#) [7101-1541-010](#) [7101-1571-002](#) [7105-1521-002](#) [7203-1571-003](#) [7209-1511-011](#) [7210-1511-015](#) [7210-1511-040](#) [7242-1511-000](#) [73216-2241](#) [73404-2300](#) [7405-1521-005](#) [7405-1521-802](#) [7406-1521-005](#) [8527](#) [8547](#) [FS11V](#) [877931](#) [8808-1511-001](#) [9049-9513-000](#) [9074-9513-000](#) [910A205F](#) [PL40-36](#) [PL40-5](#) [PL71-9](#) [980-8666-005](#) [1200690078](#) [1-201144-1](#) [120919](#) [R107003010W](#) [R110A172100](#) [R112186000](#) [R113053000W](#) [R113081000](#)