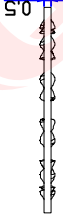
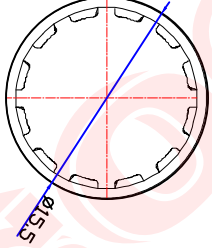
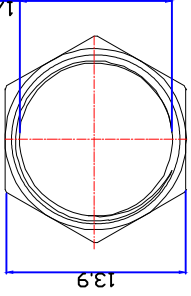
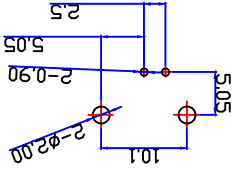
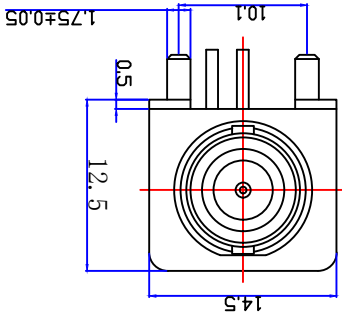
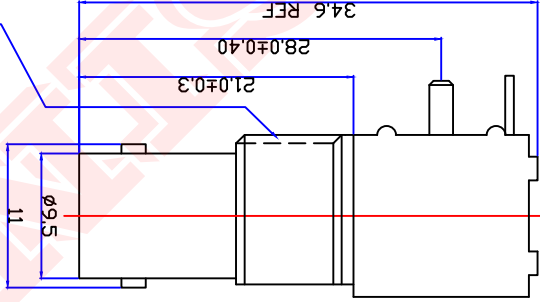
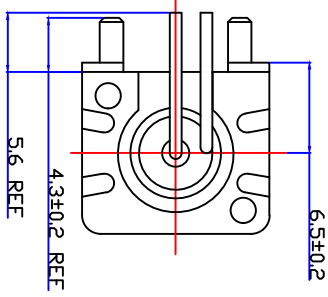
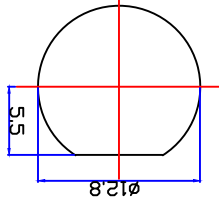




Product No.	DOSIN-801-0038		
REV	DESCRIPTION	DWN	DATE
A	First issue	CHEN	2012/11/02
			John Kine



Specifications
 Impedance:50 Ohms
 Frequency Range:DC~36
 VSWR:1.3MAX
 Working Voltage:500V rms @ sea level
 Insulation Resistance:5000 Ohms min
 Temperature Range:-55°C TO +155°C
 Relative Temperature:≤95%(40°C±2°C)

Drawings products are in line with ROHS standards

NO	Component Number	Material	Finish	APPROVALS	SCALE	UNIT	View	Tolerance	Name:	Product NO.	SIZE	DateTime	CAD FILE	SHEET: 1 OF 1
	10													
1	Body	Zinc	NI:80-120u"	NOTE:				±0.20	DOSIN Industrial(HK)Co.Ltd					
2	Center contact	Brass	AU:1u"					±0.30	DOSIN Hardware Electronics Co.,Ltd					
3	Lead	Iron	AU:1u"					6-30						
4	Fixed footrest	Iron	NI:80-120u"					30-120						
5	Insulator	POM	White					±0.5						
6	Fixed mount	ABS	White											
7	Washer	Iron	NI:80-120u"											
8	Hex nut	Brass	NI:80-120u"											
9														
10														

DOSIN CONNECTOR
 DOSIN Industrial(HK)Co.Ltd
 东莞市德泰五金电子有限公司
 DOSIN Hardware Electronics Co.,Ltd
 E-mail:dosin2005@163.com
 dosin2005@dostin-china.com
 Web:hp://www.dostin.com
 TEL:(0086)769-81153906
 FAX:(0086)769-81875836

X-ON Electronics

Largest Supplier of Electrical and Electronic Components

Click to view similar products for [RF Connectors / Coaxial Connectors](#) category:

Click to view products by [dosinconn](#) manufacturer:

Other Similar products are found below :

[R125315120](#) [8915-1511-000](#) [89674-0827](#) [5916-1103-603](#) [0106-001-000](#) [6-0001-3](#) [6001-7071-019](#) [6002-7051-003](#) [6002-7551-202](#) [6059674-1](#) [619550-1](#) [630059-000](#) [M39012/25-0021](#) [M39012/79-3008](#) [M39030/3-01N](#) [M39030/3-03N](#) [M3933/25-29N](#) [M3933/25-36N](#) [6500-7071-046](#) [6501-1071-002](#) [M83723/72W24576](#) [M83723/72W2457N](#) [6769](#) [CX050L2AQ](#) [7002-1541-010](#) [7003-1572-002](#) [7004-1512-000](#) [7009-1511-004](#) [7010-1511-000](#) [7029-1511-060](#) [7101-1541-010](#) [7101-1571-002](#) [7105-1521-002](#) [7145-1521-002](#) [7209-1511-011](#) [7210-1511-012](#) [7210-1511-015](#) [7210-1511-019](#) [7210-1511-040](#) [7225-1512-050](#) [7242-1511-000](#) [73137-5015](#) [73216-2241](#) [73251-0111](#) [73251-0672](#) [73276-1501](#) [73366-0013](#) [73404-2300](#) [73413-6080](#) [734151610](#)