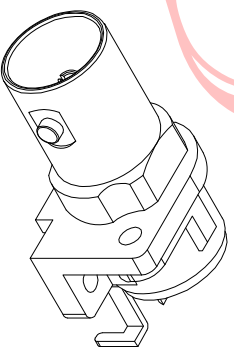
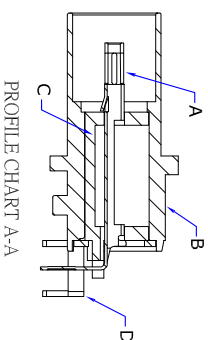
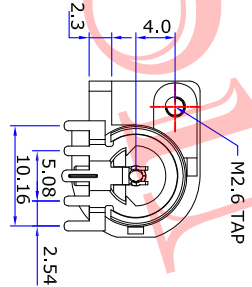
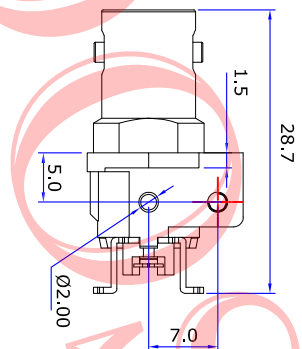
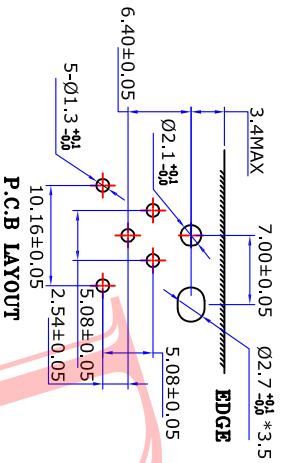
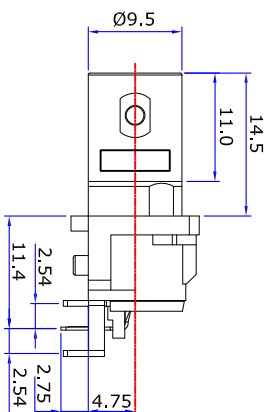
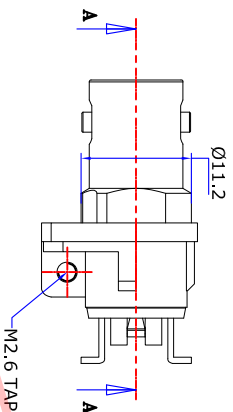
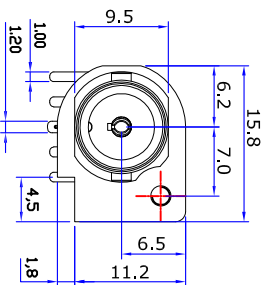
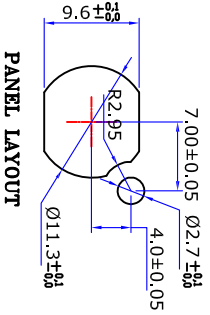




Product NO.		DOSIN-801-0092		
REV	DESCRIPTION	DWN	DATE	APPROVEN
A	First Issue	JIM	2012/11/02	John kine



Specifications

Impedance: 75 Ohms
 Frequency Range: DC~3G
 VSWR: 1.3MAX
 Working Voltage: 500V rms @ sea level
 Insulation Resistance: 5000 Ohms min
 Temperature Range: -55°C T0 +155°C
 Relative Temperature: ≤95% (40°C ±2°C)
 Drawings products are in line with ROHS standards

NOTE:

DRAWN	Zelin Zhang	2012/11/10	Tolerance	0-6 6-30 30-120	±0.10 ±0.20 ±0.40
CHECKED			View	Angul ar	±2°
APPROVALS	John	12/04.2012	UNIT	MM	

DOSIN Dongshen Industrial(H.K)Co.Ltd
 东莞市德森五金电子有限公司
Dosin Hardware Electronics Co.,Ltd

E-mail: dosin2005@163.com
 dosin2005@doshin-china.com
 Web: http://www.doshin.com
 TEL: (0086) 769-81153906
 FAX: (0086) 769-81875836

Name: BNC CONNECTOR

SIZE A Product NO. DOSIN-801-0092
 Date/Time 2012/11/02 CAD FILE D:/company drawings/BD

SHEET: 1 OF 1

3	BY-00001-NI-0	ZINC	NICKE	1
2	PN-00002-NI-0	Brass	GOLD	1
1	IN-00001-0	PPO/PBT		1
NO	DESCRIPTION	MATERIAL	FINISH	QTY

A

B

K1-56

D

E

F

G

X-ON Electronics

Largest Supplier of Electrical and Electronic Components

Click to view similar products for [RF Connectors / Coaxial Connectors](#) category:

Click to view products by [dosinconn](#) manufacturer:

Other Similar products are found below :

[R125315120](#) [8915-1511-000](#) [89674-0827](#) [5916-1103-603](#) [0106-001-000](#) [6-0001-3](#) [6001-7071-019](#) [6002-7051-003](#) [6002-7551-202](#) [6059674-1](#) [619550-1](#) [630059-000](#) [M39012/25-0021](#) [M39012/79-3008](#) [M39030/3-01N](#) [M39030/3-03N](#) [M3933/25-29N](#) [M3933/25-36N](#) [6500-7071-046](#) [6501-1071-002](#) [M83723/72W24576](#) [M83723/72W2457N](#) [6769](#) [CX050L2AQ](#) [7002-1541-010](#) [7003-1572-002](#) [7004-1512-000](#) [7009-1511-004](#) [7010-1511-000](#) [7029-1511-060](#) [7101-1541-010](#) [7101-1571-002](#) [7105-1521-002](#) [7145-1521-002](#) [7209-1511-011](#) [7210-1511-012](#) [7210-1511-015](#) [7210-1511-019](#) [7210-1511-040](#) [7225-1512-050](#) [7242-1511-000](#) [73137-5015](#) [73216-2241](#) [73251-0111](#) [73251-0672](#) [73276-1501](#) [73366-0013](#) [73404-2300](#) [73413-6080](#) [734151610](#)