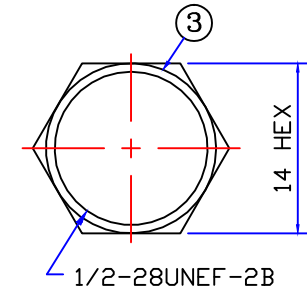
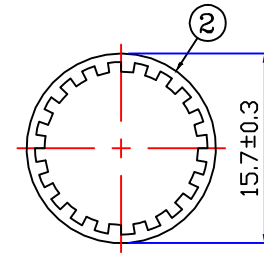
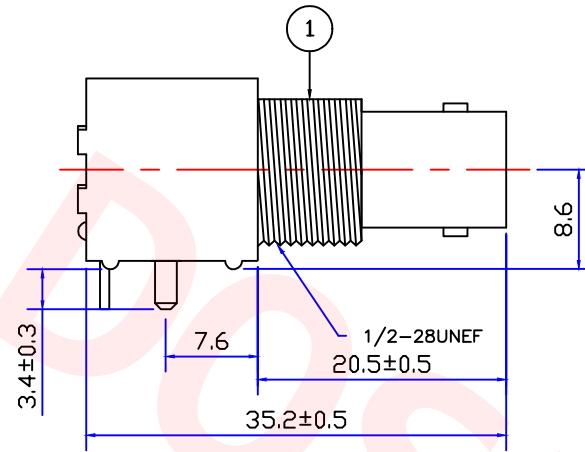
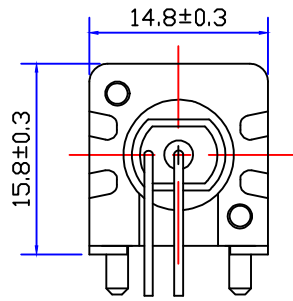




Product NO.		DOSIN-801-0181		
REV	DESCRIPTION	DWN	DATE	APPROVEN
A	First issue	chen	2013/06/12	John kine



Specifications

Impedance: 50-75 Ohms

Frequency Range: DC~3G

VSWR: 1.3MAX

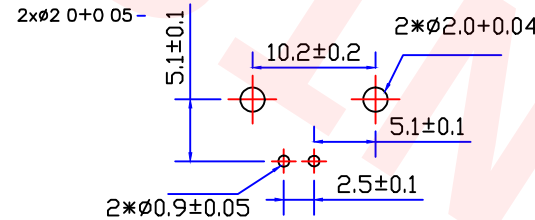
Working Voltage: 500V rms @ sea level

Insulation Resistance: 5000 Ohms min

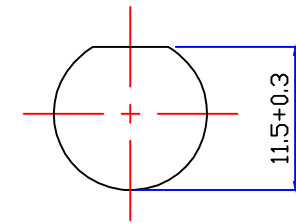
Temperature Range: -55°C TO +155°C

Relative Temperature: ≤95% (40°C ±2°C)

Drawings products are in line with ROHS standards



RECOMMENDED
PCB HOLE



RECOMMENDED
PANEL HOLE

NOTE:

Tolerance

0-6	±0.15
6-30	±0.20
30-120	±0.5
Angular	±2°



Dosin Industrial(H.K)Co.Ltd

东莞市德索五金电子有限公司

Dosin Hardware Electronics Co.,Ltd

E-mail: dosin2005@163.com
dosin2005@dosing-china.com
Web: http://www.dosingconn.com
TEL: (0086) 769-81153906
FAX: (0086) 769-81875836

DRAWN

Zelin.chen

2013/6/12

CHECKED

John

12/06.2013

APPROVALS

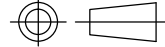
John

12/06.2013

SCALE

1:1

View



UNIT

MM

Name: BNC JACK FOR PCB CONNECTOR

SIZE

Product NO.

DOSIN-801-0181

REV

B

DateTime

2013/6/12

CAD FILE

D/company drawings/BD

SHEET: 1 OF 1

3	NUT	BRASS	NICKEL
2	LOCK WASHER	SK-5	NICKEL
1	CONTACT	P.BRONZE	GOLD+TIN
	GROUNDING	Cu COVERED STEEL	TIN
1	INSULATOR	P.P	NONE
	BODY	ZINC ALLOY	NICKEL
	HOUSING	PBT+30%G.F.	NONE
	POST	BRASS	TIN
ITEM	DESCRIPTION	MATERIAL	FINISHED

X-ON Electronics

Largest Supplier of Electrical and Electronic Components

Click to view similar products for [RF Connectors / Coaxial Connectors](#) category:

Click to view products by [dosinconn](#) manufacturer:

Other Similar products are found below :

[89674-0827](#) [6059674-1](#) [630059-000](#) [6501-1071-002](#) [6769](#) [7002-1541-010](#) [7002-1572-002](#) [7004-1512-000](#) [7009-1511-004](#) [7101-1541-010](#)
[7101-1571-002](#) [7105-1521-002](#) [7145-1521-002](#) [7203-1571-003](#) [7209-1511-011](#) [7210-1511-040](#) [7242-1511-000](#) [7405-1521-005](#) [7405-1521-](#)
[802](#) [804S01D04M040](#) [8527](#) [8547](#) [FS11V](#) [877931](#) [8808-1511-001](#) [9049-9513-000](#) [9074-9513-000](#) [PL11C-026](#) [PL40-36](#) [9408-1113-000](#)
[980-8666-005](#) [11 SMA-50-2-6 / 111 NE](#) [11 SMA-50-3-6 / 111 NE](#) [11 SMA-50-2-6/111 NH](#) [1-201144-1](#) [120919](#) [R107003010W](#) [R112186000](#)
[R113053000W](#) [R113082097](#) [R113236000](#) [R114083000](#) [R114670000W](#) [R123415000W](#) [R124072220W](#) [R124076320](#) [R124076450](#)
[R124175123](#) [R124176123W](#) [R125075000W](#)