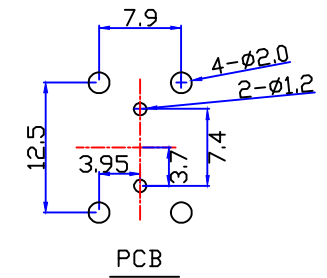
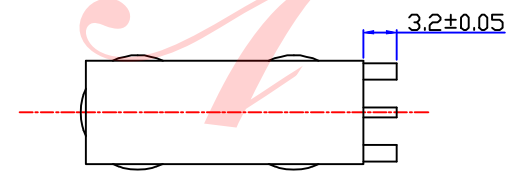
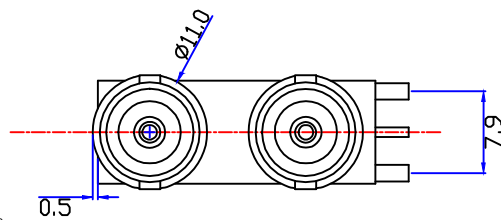
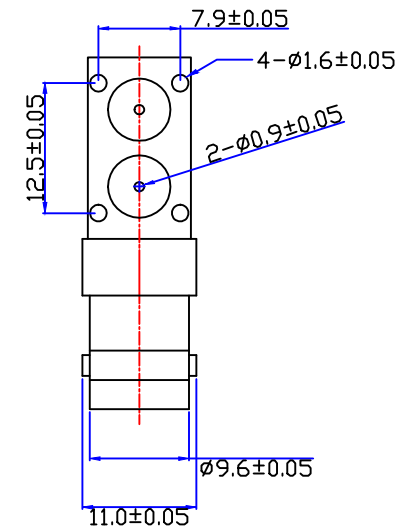
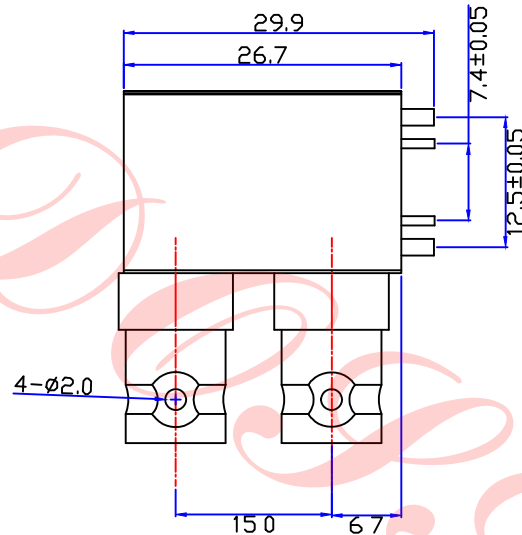
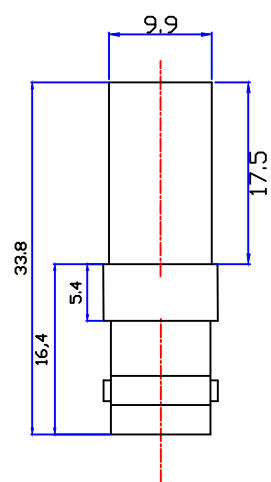




Customer NO:		DOSIN-801-0230-S		
REV	DESCRIPTION	DWN	DATE	APPROVEN
A	First issue	Mr. CHEN	2017/04/25	John kine
B				



Specifications:

IMPEDANCE: 75 Ohms
 Frequency range: 0~6GHZ
 VSWR: 1.5MAX
 Working voltage: 500V rms @ sea level
 Insulation resistance: 5000 Ohms min
 Temperature range: -65°C TO +165°C
 Relative temperature: ≤95%(40° C±2° C)

NOTE:

Tolerance

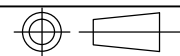
X.	±0.15
X.X	±0.10
X.XX	±0.05
Angular	±5°

DOSIN Dosing Industrial (H.K) Co., Ltd
 东莞市德索五金电子制品有限公司
 Dosing Hardware Electronics Co., Ltd

E-mail: dosin2005@163.com
 dosin2005@dosing-china.com
 Web: http://www.dosingconn.com
 TEL: (0086) 769-81153906
 FAX: (0086) 769-81875836

DRAWN
 Zelin.chen
 CHECKED

View



Name: BNC JACK CONNECTOR

APPROVALS
John

SCALE

1:1

DateTime
2017/04/25

CAD FILE
H/company drawings/BD

SHEET: 1 OF 1

NO	DESCRIPTION	MATERIAL	FINISH	QTY
5				
4				
3	INSULATOR	TEFLON	WHITE	2
2	CONTACT	BRASS	GOLD	2
1	BODY	BRASS	NICKEL	1

SIZE A	Product NO. DOSIN-801-0230-S	REV A
-----------	------------------------------	----------

X-ON Electronics

Largest Supplier of Electrical and Electronic Components

Click to view similar products for [RF Connectors](#) / [Coaxial Connectors](#) category:

Click to view products by [dosinconn](#) manufacturer:

Other Similar products are found below :

[89674-0827](#) [6059674-1](#) [630059-000](#) [6501-1071-002](#) [6769](#) [7002-1541-010](#) [7002-1572-002](#) [7004-1512-000](#) [7009-1511-004](#) [7101-1541-010](#)
[7101-1571-002](#) [7105-1521-002](#) [7145-1521-002](#) [7203-1571-003](#) [7209-1511-011](#) [7210-1511-040](#) [7242-1511-000](#) [7405-1521-005](#) [7405-1521-](#)
[802](#) [804S01D04M040](#) [8527](#) [8547](#) [FS11V](#) [877931](#) [8808-1511-001](#) [9049-9513-000](#) [9074-9513-000](#) [PL11C-026](#) [PL40-36](#) [9408-1113-000](#)
[980-8666-005](#) [11 SMA-50-2-6 / 111 NE](#) [11 SMA-50-3-6 / 111 NE](#) [11 SMA-50-2-6/111 NH](#) [1-201144-1](#) [120919](#) [R107003010W](#) [R112186000](#)
[R113053000W](#) [R113082097](#) [R113236000](#) [R114083000](#) [R114670000W](#) [R123415000W](#) [R124072220W](#) [R124076320](#) [R124076450](#)
[R124175123](#) [R124176123W](#) [R125075000W](#)