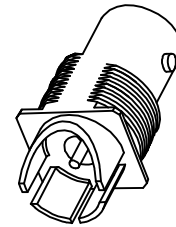
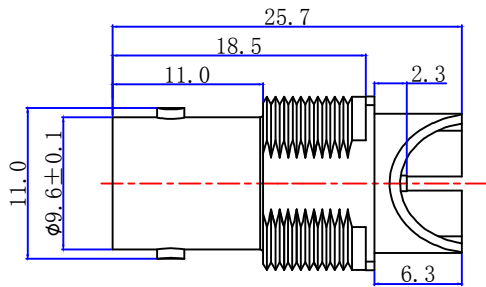
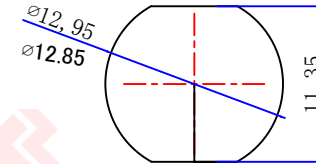




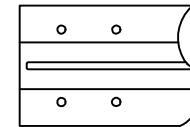
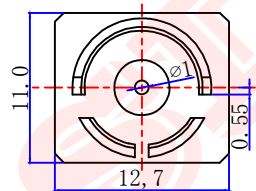
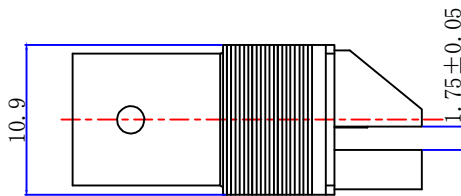
Product NO.		DOSIN-801-0508		
REV	DESCRIPTION	DWN	DATE	APPROVEN
A	First issue	Mr. CHEN	2019/05/05	John kine
B				



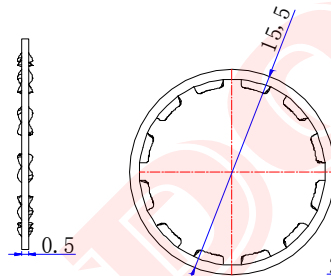
SCALE 2/1



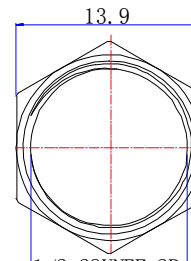
RECOMMENDED  
PANEL CUT-OUT



RECOMMENDED  
PCB LAYOUT



WASHER



NUT

**SPECIFICATIONS:**

Impedance: 75 Ohms  
 Frequency Range: Please refer to the table above  
 VSWR: 1.3max  
 Working Voltage: 500v RMS @ SEA level  
 Insulation Resistance: 5000 Ohms min  
 Temperature Range: -55°C TO +155°C  
 Drawings products are in line with ROHS standards

NOTE:	Tolerance	0-6 ±0.10 6-30 ±0.15 30-120 ±0.20 Angular ±5°
DRAWN Zelin. Zhang	View	
CHECKED	UNIT	MM
APPROVALS	SCALE	1:1

**DOSIN** *Dosin Industrial (H.K) Co. Ltd*  
 东莞市德索五金电子产品有限公司  
*Dosin Hardware Electronics Co., Ltd*  
 E-mail: dosin2005@163.com  
 dosin2005@dosin-china.com  
 Web: http://www.dosinconn.com  
 TEL: (0086) 769-81153906  
 FAX: (0086) 769-81875836

Name: BNC JACK FOR PCB CONNECTOR

SIZE A Product NO. DOSIN-801-0508 REV A

DateTime 2019/05/05 CAD FILE H/company drawings/BD SHEET: 1 OF 1

NO	Component Number	Material	Finish
1	Body	Zinc	Gold
2	Contact pin	Phosphor copper	Gold
3	Insulation	PTFE	White
4	NUT	BRASS	Gold
5	WASHER	Iron	Gold

## X-ON Electronics

Largest Supplier of Electrical and Electronic Components

*Click to view similar products for [RF Connectors / Coaxial Connectors](#) category:*

*Click to view products by [dosinconn](#) manufacturer:*

Other Similar products are found below :

[89674-0827](#) [6059674-1](#) [630059-000](#) [6501-1071-002](#) [6769](#) [7002-1541-010](#) [7002-1572-002](#) [7004-1512-000](#) [7009-1511-004](#) [7101-1541-010](#)  
[7101-1571-002](#) [7105-1521-002](#) [7145-1521-002](#) [7203-1571-003](#) [7209-1511-011](#) [7210-1511-040](#) [7242-1511-000](#) [7405-1521-005](#) [7405-1521-](#)  
[802](#) [804S01D04M040](#) [8527](#) [8547](#) [FS11V](#) [877931](#) [8808-1511-001](#) [9049-9513-000](#) [9074-9513-000](#) [PL11C-026](#) [PL40-36](#) [9408-1113-000](#)  
[980-8666-005](#) [11 SMA-50-2-6 / 111 NE](#) [11 SMA-50-3-6 / 111 NE](#) [11 SMA-50-2-6/111 NH](#) [1-201144-1](#) [120919](#) [R107003010W](#) [R112186000](#)  
[R113053000W](#) [R113082097](#) [R113236000](#) [R114083000](#) [R114670000W](#) [R123415000W](#) [R124072220W](#) [R124076320](#) [R124076450](#)  
[R124175123](#) [R124176123W](#) [R125075000W](#)