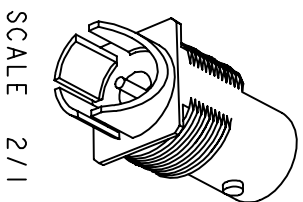
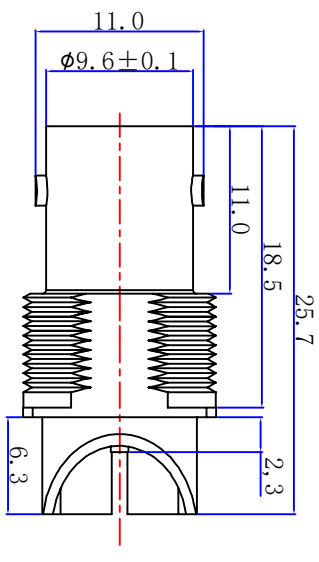
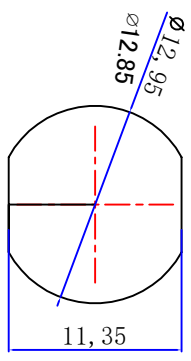




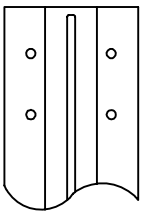
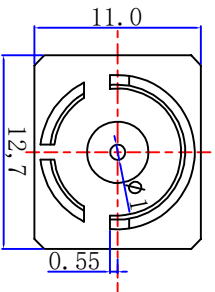
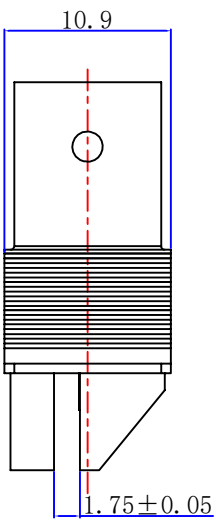
Product NO.		DS801FPS-0059	
REV	DESCRIPTION	DWN	DATE
A	First Issue	W.cheng	2020/09/21
B			APPROVEN
			John Kline



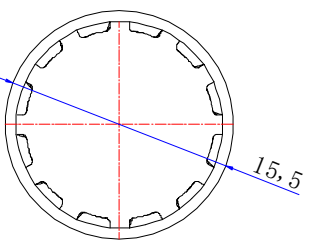
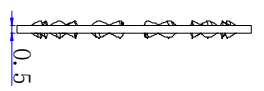
SCALE 2/1



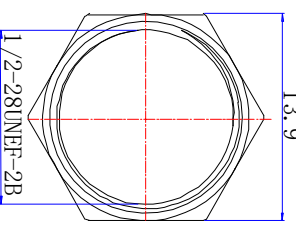
RECOMMENDED
PANEL CUT-OUT



RECOMMENDED
PCB LAYOUT



WASHER



NUT

SPECIFICATIONS:

Impedance: 75 Ohms
 Frequency Range: Please refer to the table above
 VSWR: 1.3max
 Working Voltage: 500V RMS @ SEA level
 Insulation Resistance: 5000 Ohms min
 Temperature Range: -55°C T0 +155°C
 Drawings products are in line with ROHS standards

1	Body	Zinc	NICKEL
2	Contact pin	phosphor copper	GOLD
3	Insulation	PTFE	White
4	NUT	BRASS	NICKEL
5	WASHER	Iron	NICKEL
NO	Component Number	Material	Finish
A	B	C	D

NOTE:	DRAWN	Zelin Zhang	Tolerance	0-6 6-30 30-120 Angular	±0.10 ±0.15 ±0.20 ±5°
CHECKED			View	UNIT	MM
APPROVALS			SCALE		1:1

Name: **BNC JACK FOR PCB CONNECTOR**
Dosin Industrial (HK) Co Ltd
 东莞市德索五金电子有限公司
 Dosin Hardware Electronics Co., Ltd
 E-mail: dosin2005@163.com
 dosin2005@dosin-china.com
 Web: http://www.dosincomm.com
 TEL: (0086) 769-81153906
 FAX: (0086) 769-81875836

SIZE	Product NO.	CAD FILE	REV
A	DS801FPS-0059	H/company drawings/BD	A
Date/Time			
2020/09/21			
SHEET: 1 OF 1			

X-ON Electronics

Largest Supplier of Electrical and Electronic Components

Click to view similar products for [RF Connectors / Coaxial Connectors](#) category:

Click to view products by [dosinconn](#) manufacturer:

Other Similar products are found below :

[89674-0827](#) [6059674-1](#) [630059-000](#) [6501-1071-002](#) [6769](#) [7002-1541-010](#) [7002-1572-002](#) [7004-1512-000](#) [7009-1511-004](#) [7101-1541-010](#)
[7101-1571-002](#) [7105-1521-002](#) [7145-1521-002](#) [7203-1571-003](#) [7209-1511-011](#) [7210-1511-040](#) [7242-1511-000](#) [7405-1521-005](#) [7405-1521-](#)
[802](#) [804S01D04M040](#) [8527](#) [8547](#) [FS11V](#) [877931](#) [8808-1511-001](#) [9049-9513-000](#) [9074-9513-000](#) [PL11C-026](#) [PL40-36](#) [9408-1113-000](#)
[980-8666-005](#) [11 SMA-50-2-6 / 111 NE](#) [11 SMA-50-3-6 / 111 NE](#) [11 SMA-50-2-6/111 NH](#) [1-201144-1](#) [120919](#) [R107003010W](#) [R112186000](#)
[R113053000W](#) [R113082097](#) [R113236000](#) [R114083000](#) [R114670000W](#) [R123415000W](#) [R124072220W](#) [R124076320](#) [R124076450](#)
[R124175123](#) [R124176123W](#) [R125075000W](#)