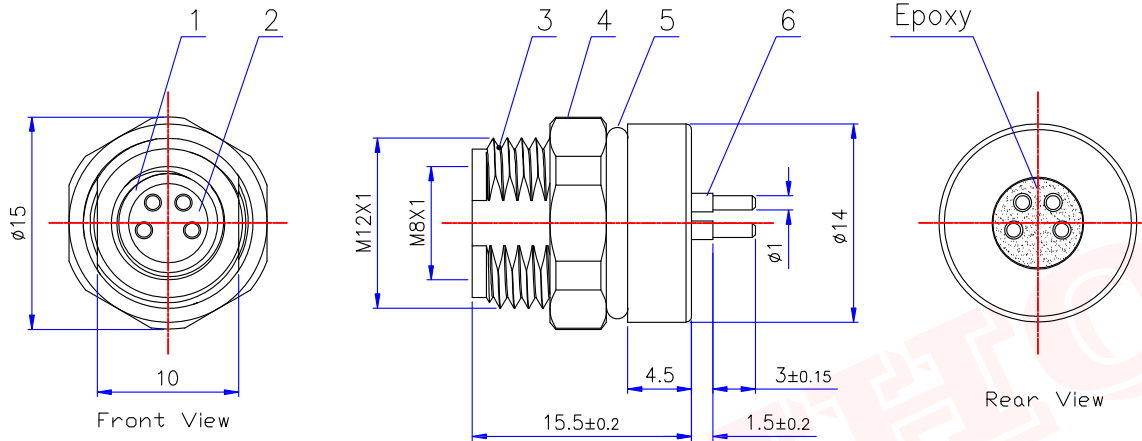
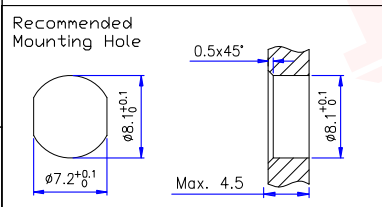




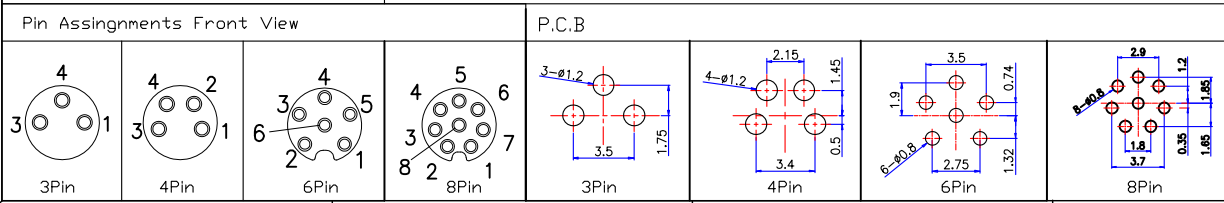
Product NO.		RHT-634-1346			
ISSUE	DESCRIPTION	DWN	DATE	APPROVEN	
R1.0	First issue	Gavin	2020/01/09	JIM. KING	



- NOTES:
- Rated voltage/current: 3pin: 60V/3A  
4pin: 60V/3A  
6pin: 30V/1A
  - Withstanding voltage: 3,4pin: AC850V/1 Min  
6pin: AC650V/1 Min
  - Levels of protection: IP67
  - Connection mode: Soldering
  - Operating temperature: -20°C ~ +85°C
  - RoHS Compliance



6	Contacts	Brass	Gold	3-8
5	0-Ring	Rubber		1
4	Nut M12*1	Brass	Nickel	1
3	Body	Brass	Nickel	1
2	Insulator	PA66	Black	1
1	0-Ring	Rubber		1
NO	Description	Material	Finish	Qty



-TOLERANCES- UNLESS OTHERWISE SPECIFIED	<b>RENHOTECH</b> <b>RENHOTECH GROUP</b> <a href="http://www.renhotech.com">www.renhotech.com</a>				
	PART DESCRIPTION: Circular Panel Mount, Female, M8, Front Mount, DIP				
UNLESS OTHERWISE SPECIFIED TOLERANCES FOR MILLIMETERS ARE: 0.5 - 8mm ± 0.20mm 8 - 30mm ± 0.25mm 30 - 120mm ± 0.30mm	Appr: JIM. KING	P/N: RHT-634-1346			
Check:	Date	Scale	Unit	Type	Page
Draw: Gavin	2020.01.09	Free	MM	Z	1/1

## X-ON Electronics

Largest Supplier of Electrical and Electronic Components

*Click to view similar products for [Standard Circular Connector](#) category:*

*Click to view products by [dosinconn](#) manufacturer:*

Other Similar products are found below :

[600273N007](#) [6134-336-13149](#) [6134-337-11149](#) [6134-337-2390](#) [6134-341-17149](#) [67-02E12-60PX](#) [CXS3102A181S](#) [75-190611-03S](#) [75-474014-05S](#) [75-474211-03P](#) [75-474618-04S](#) [75-474620-07P](#) [799539-000](#) [805-005-07NF11-19PC](#) [805-005-07NF15-7PA](#) [FMP.2M.310.XLCT](#) [836783-1](#) [862256-1](#) [866857-1](#) [867865-1](#) [PT08P-14-19S](#) [PT08P-14-5S](#) [QCM019PC2DC012B](#) [121583-0217](#) [121667-0020](#) [RD10A16-19-P6CS051/1](#) [RD16A14-12-S6CS051/2](#) [1301240268](#) [1301240275](#) [DCU-08BFEA-LL7001](#) [RM15WTP-CP\(5\)\(71\)](#) [14482](#) [16283-18](#) [1877910-1](#) [206039-3](#) [206323-1](#) [207002-2](#) [207682-1](#) [CA06COME14SA7P](#) [211777-1](#) [JL04-1012CK\(05\)-R](#) [JL04V-2A28-11PE-R](#) [JL04V-2E10SL-3PE-B-R](#) [JL04V-2E20-15PE-B-R](#) [JL04V-2E20-4PE-B-R](#) [JL04V-6A24-11SE-EB-R](#) [JN1AS04MK1X](#) [JN1HS10PLKS2](#) [JN2AS04MK2X-R](#) [JN2DS10SL3-R](#)