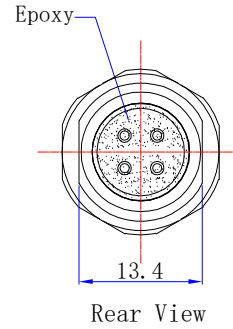
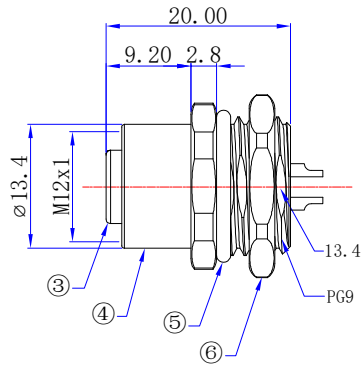
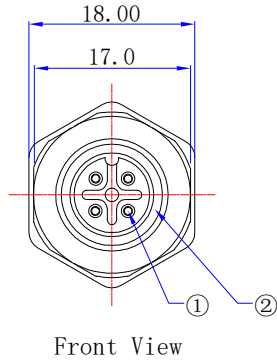




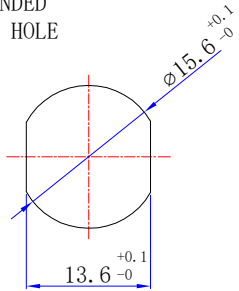
Product NO.		RHT-634-1422		
ISSUE	DESCRIPTION	DWN	DATE	APPROVEN
R1.0	First issue	Gavin	2021/07/13	JIM.KING



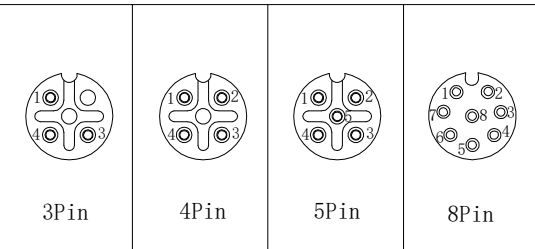
NOTES:

- Rated voltage/current : 3pin: 250V/4A
4pin: 250V/4A
5pin: 60V/4A
8pin: 30V/2A
- Withstanding voltage : 3,4pin: AC1500V/1 Min
5pin: AC1120V/1 Min
8pin: AC500V/1 Min
- Levels of protection: IP67
- Connection mode: Soldering
- Operating temperature: -40°C ~+80°C
- RoHS Compliance

RECOMMENDED MOUNTING HOLE



Pin Assingments Front View



6	Nut M16*1.5	Brass	Nickel	1
5	O-Ring	Rubber	Black	1
4	Body	Brass	Nickel	1
3	Insulator	PA66	Black	1
2	O-Ring	Rubber		1
1	Contacts	Brass	Gold	3-8
NO	Description	Material	Finish	Qty

-TOLERANCES- UNLESS OTHERWISE SPECIFIED UNLESS OTHERWISE SPECIFIED TOLERANCES FOR MILLIMETERS ARE: 0.5 - 8mm ± 0.20mm 8 - 30mm ± 0.25mm 30 -120mm ± 0.30mm			RENHOTEC GROUP		
	PART DESCRIPTION: Circular Panel Mount, Female, M12, Back Mount, DIP		P/N: RHT-634-1422		
Appr: JIM.KING		Date	Scale	Unit	Type
Check:		2021.07.13	Free	MM	Z
Draw: Gavin					1/1

X-ON Electronics

Largest Supplier of Electrical and Electronic Components

Click to view similar products for [Standard Circular Connector](#) category:

Click to view products by [dosinconn](#) manufacturer:

Other Similar products are found below :

[600273N007](#) [6134-336-13149](#) [6134-337-11149](#) [6134-337-2390](#) [6134-341-17149](#) [67-02E12-60PX](#) [CXS3102A181S](#) [75-190611-03S](#) [75-474014-05S](#) [75-474211-03P](#) [75-474618-04S](#) [75-474620-07P](#) [799539-000](#) [805-005-07NF11-19PC](#) [805-005-07NF15-7PA](#) [FMP.2M.310.XLCT](#) [836783-1](#) [862256-1](#) [866857-1](#) [867865-1](#) [PT08P-14-19S](#) [PT08P-14-5S](#) [QCM019PC2DC012B](#) [121583-0217](#) [121667-0020](#) [RD10A16-19-P6CS051/1](#) [RD16A14-12-S6CS051/2](#) [1301240268](#) [1301240275](#) [DCU-08BFEA-LL7001](#) [RM15WTP-CP\(5\)\(71\)](#) [14482](#) [16283-18](#) [1877910-1](#) [206039-3](#) [206323-1](#) [207002-2](#) [207682-1](#) [CA06COME14SA7P](#) [211777-1](#) [JL04-1012CK\(05\)-R](#) [JL04V-2A28-11PE-R](#) [JL04V-2E10SL-3PE-B-R](#) [JL04V-2E20-15PE-B-R](#) [JL04V-2E20-4PE-B-R](#) [JL04V-6A24-11SE-EB-R](#) [JN1AS04MK1X](#) [JN1HS10PLKS2](#) [JN2AS04MK2X-R](#) [JN2DS10SL3-R](#)