

Features

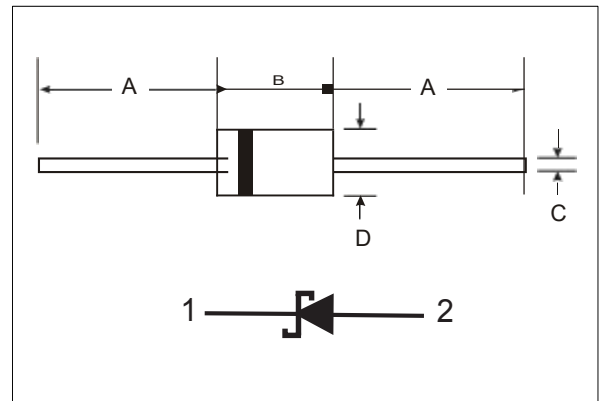
- Guard Ring Die Construction for Transient Protection
- High Current Capability
- Low Power Loss, High Efficiency
- High Surge Current Capability
- Comply with RoHS standard

Applications

- Low Voltage, High Frequency Inverters
- Free Wheeling, and Polarity Protection Applications

Mechanical Data

- package:DO-201AD/DO-27
- Terminals: Plated Leads Solderable per MIL-STD-202, Method 208
- Mounting Position : Any



DO-201AD/DO-27		
Dim	Min	Max
A	24.00	—
B	7.20	9.50
C	1.15	1.25
D	5.00	5.60
All Dimensions in mm		

Maximum Ratings And Electrical Characteristics($T_A=25^{\circ}\text{C}$ unless otherwise noted)

Characteristic	Symbol	1N5823	1N5824	1N5825	Unit
Peak Repetitive Reverse Voltage	VRRM	20	30	40	V
Working Peak Reverse Voltage	VRWM				
DC Blocking Voltage	VR				
RMS Reverse Voltage	VR(RMS)	14	21	28	V
Average Rectified Output Current (Note 1)	IO		5.0		A
		@ $T_L = 100^{\circ}\text{C}$			
Non-Repetitive Peak Forward Surge Current	IFSM		150		A
		8.3ms Single half sine-wave superimposed on rated load (JEDEC Method)			
Forward Voltage	VFM		0.55		V
		@ $I_F = 5.0\text{A}$			
Peak Reverse Current	IRM		0.5		mA
		@ $T_A = 25^{\circ}\text{C}$			
		@ $T_A = 100^{\circ}\text{C}$			
Typical Junction Capacitance (Note 2)	Cj		500		pF
Typical Thermal Resistance (Note 1)	R θ JA		10		$^{\circ}\text{C}/\text{W}$
Operating and Storage Temperature Range	Tj, TSTG		-65 to +150		$^{\circ}\text{C}$

Note: 1. Valid provided that leads are kept at ambient temperature at a distance of 9.5mm from the case.

2. Measured at 1.0 MHz and applied reverse voltage of 4.0V D.C.



■ Characteristics Curves($T_A=25^\circ\text{C}$ unless otherwise noted)

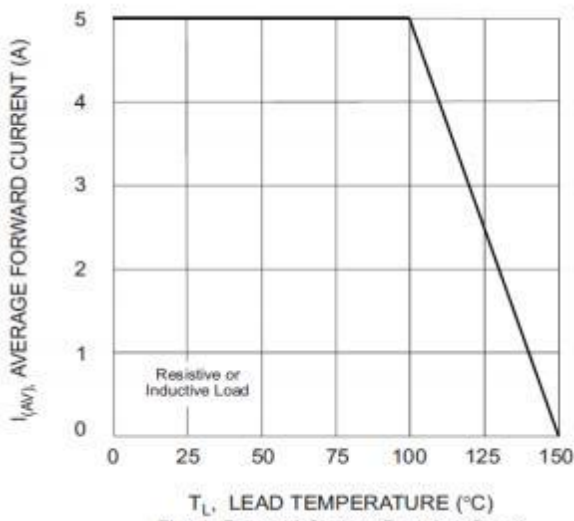


Fig. 1 Forward Current Derating Curve

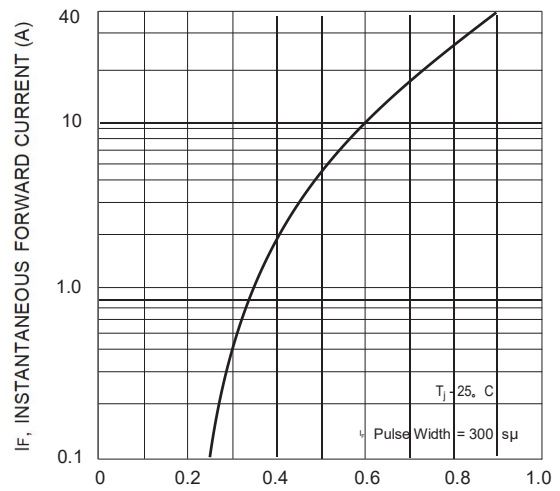


Fig. 2 Typical Forward Characteristics

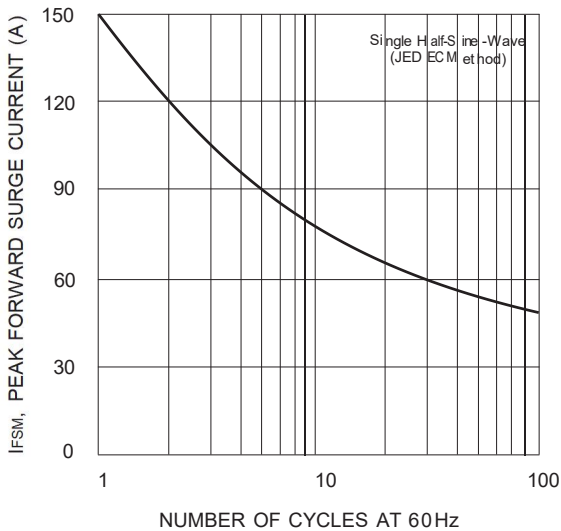


Fig. 3 Max Non-Repetitive Peak Fwd Surge Current

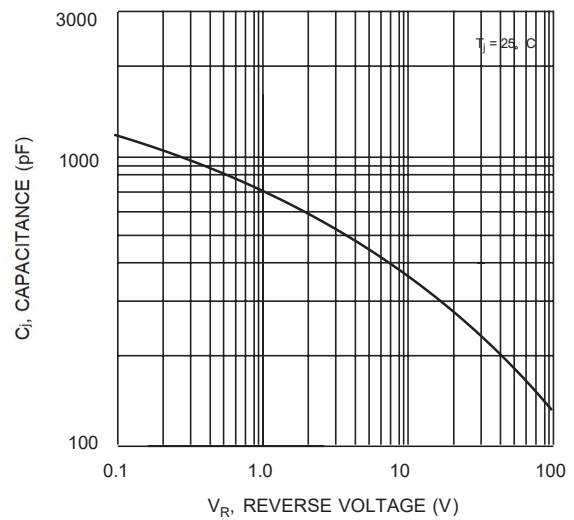


Fig. 4 Typical Junction Capacitance

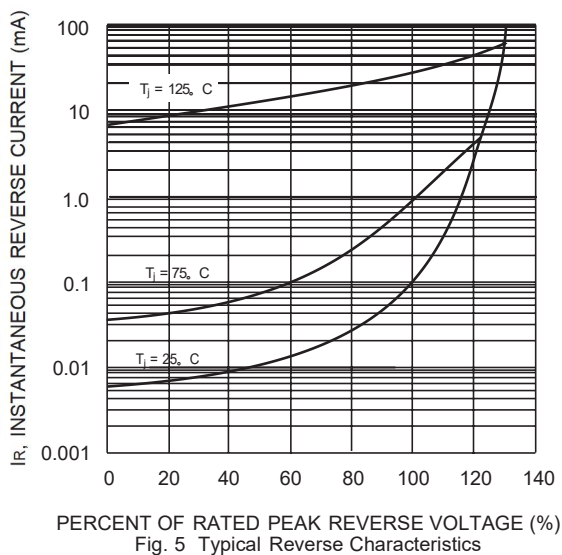


Fig. 5 Typical Reverse Characteristics

X-ON Electronics

Largest Supplier of Electrical and Electronic Components

Click to view similar products for [Schottky Diodes & Rectifiers](#) category:

Click to view products by [DOWO](#) manufacturer:

Other Similar products are found below :

[MA4E2039](#) [MMBD301M3T5G](#) [HFA35HB60C](#) [RB160M-50TR](#) [D83C](#) [BAS16E6433HTMA1](#) [BAS 3010S-02LRH](#) [E6327](#) [BAT 54-02LRH](#)
[E6327](#) [NRVBAF360T3G](#) [NSR05F40QNXT5G](#) [NTE555](#) [JANS1N6640](#) [SS3003CH-TL-E](#) [GA01SHT18](#) [CRS10I30A\(TE85L,QM](#)
[MBRA140TRPBF](#) [MBRB30H30CT-1G](#) [BAT 15-04R](#) [E6152](#) [JANTX1N5712-1](#) [DMJ3940-000](#) [SB007-03C-TB-E](#) [NRVBB20100CTT4G](#)
[NRVBM120LT1G](#) [NTSB30U100CT-1G](#) [CRG04\(T5L,TEMQ\)](#) [ACDBA1100LR-HF](#) [ACDBA1200-HF](#) [ACDBA240-HF](#) [ACDBA3100-HF](#)
[CDBQC0530L-HF](#) [ACDBA260LR-HF](#) [ACDBA1100-HF](#) [10BQ015-M3/5BT](#) [NRVBM120ET1G](#) [VSSB410S-M3/5BT](#) [1N5819T-G](#)
[PDS1040Q-13](#) [B160BQ-13-F](#) [SDM05U20CSP-7](#) [BAS 70-07](#) [E6433](#) [B140S1F-7](#) [HSM560Je3/TR13](#) [DDB2265-000](#) [ZHCS506QTA](#)
[HSM190Je3/TR13](#) [B330AF-13](#) [ACDBUC0230-HF](#) [SDM1U100S1F-7](#) [MBR10200CTF-G1](#) [CDLL5712](#)