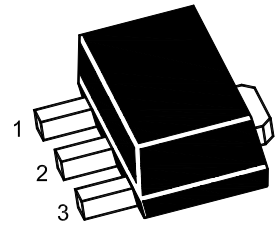




**Features**

- Input voltage: up to 35V
- Output voltage: 5V
- Output current up to 100 mA, internal thermal overload protection and short-circuit current limiting.

**SOT-89**



1. VOUT 2. GND 3. VIN

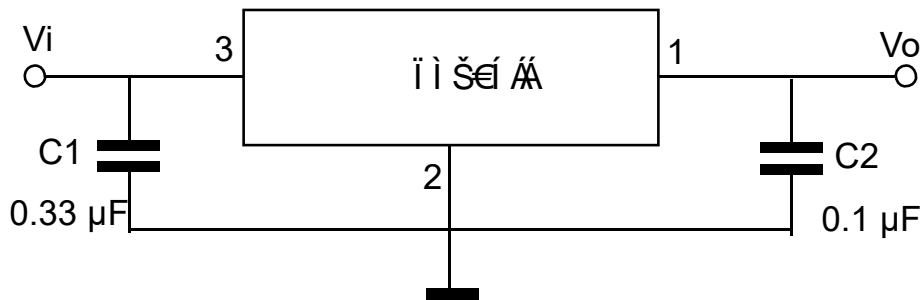
**Marking Code : 78L05**

**Absolute Maximum Ratings**

Ratings at 25°C ambient temperature unless otherwise specified.

Parameter	Symbol	Value	Unit
Input Voltage	$V_I$	35	V
Output Current	$I_o$	100	mA
Maximum Power Dissipation	$P_D$	350	mW
Thermal Resistance Junction-Air	$R_{\theta JA}$	250	°C/W
Junction Temperature	$T_J$	150	°C
Operating Temperature Range	$T_{OPR}$	-40 to +125	°C
Storage Temperature Range	$T_{STG}$	-55 to +150	°C

Note: Absolute maximum ratings are those values beyond which the device could be permanently damaged.



Note: Bypass capacitors are recommended for optimum stability and transient response and should be located as close as possible to the regulators.

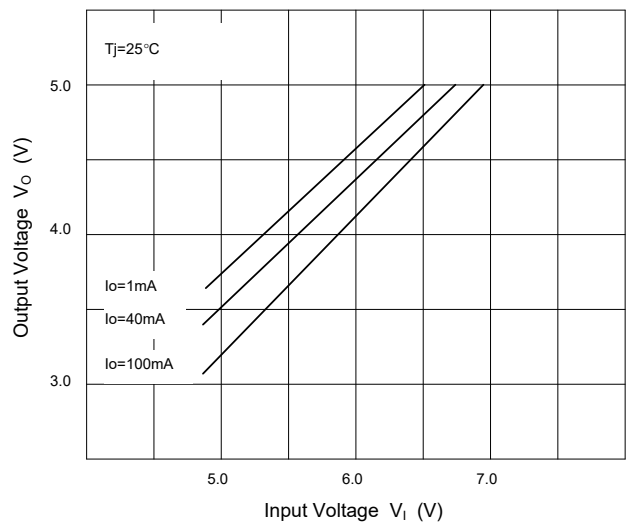
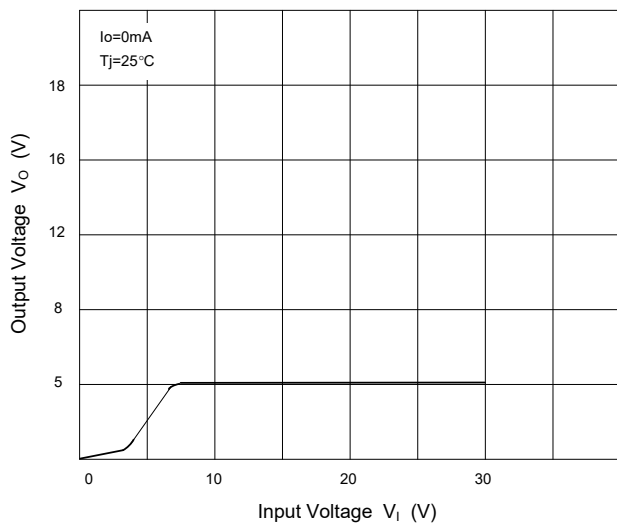
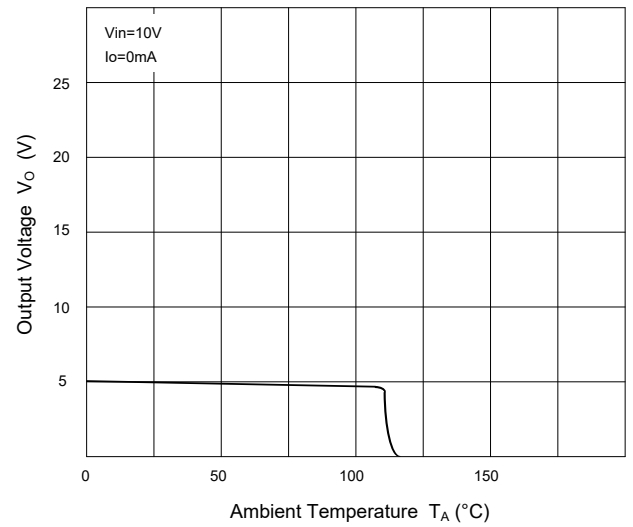
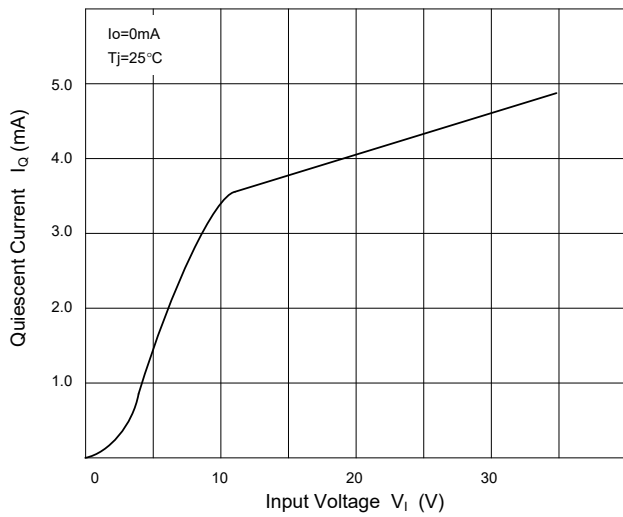
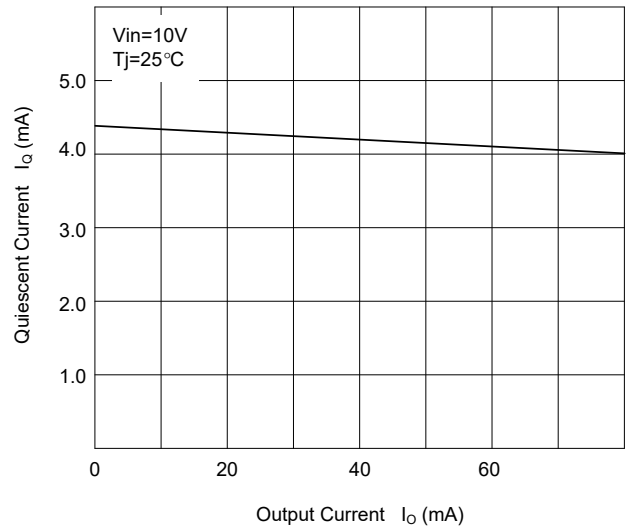
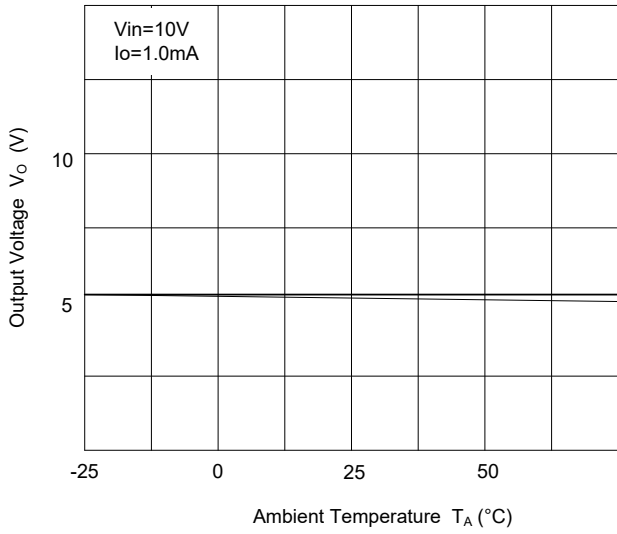
**Electrical Characteristics**

 Ratings at  $0^{\circ}\text{C} \leq T_J \leq 125^{\circ}\text{C}$ ,  $V_I = 10\text{V}$ ,  $I_O = 40\text{mA}$ ,  $C_I = 0.33\mu\text{F}$ ,  $C_O = 0.1\mu\text{F}$ , unless otherwise specified.

Parameter	Symbol	Test Conditions	Min.	Typ.	Max.	Unit
Output Voltage	$V_O$	$T_J = 25^{\circ}\text{C}$	4.80	5.0	5.2	V
		$I_O = 1\text{mA to } 40\text{mA}$ , $V_I = 7\text{V to } 20\text{V}$	4.75	5.0	5.25	V
		$I_O = 1\text{mA to } 70\text{mA}$ , $V_I = 10\text{V}$	4.75	5.0	5.25	V
Line Regulation	$\Delta V_O$	$V_I = 7\text{V to } 20\text{V}$ , $T_J = 25^{\circ}\text{C}$	--	--	150	mV
		$V_I = 8\text{V to } 20\text{V}$ , $T_J = 25^{\circ}\text{C}$	--	--	100	mV
Load Regulation	$\Delta V_O$	$I_O = 1\text{mA to } 100\text{mA}$ , $T_J = 25^{\circ}\text{C}$	--	--	60	mV
		$I_O = 1\text{mA to } 40\text{mA}$ , $T_J = 25^{\circ}\text{C}$	--	--	30	mV
Ripple Rejection	RR	$V_I = 8\text{V to } 20\text{V}$ , $f = 120\text{Hz}$ , $T_J = 25^{\circ}\text{C}$	40	49	--	dB
Dropout Voltage	$V_D$	$T_J = 25^{\circ}\text{C}$	--	1.7	--	V
Quiescent Current	$I_Q$		--	3.8	6	mA
Quiescent Current Change	$\Delta I_Q$	$V_I = 8\text{V to } 20\text{V}$	--	--	1.5	mA
		$I_O = 1\text{mA to } 40\text{mA}$	--	--	0.1	mA
Output Noise Voltage	$V_N$	$10\text{Hz} \leq f \leq 100\text{KHz}$ , $T_J = 25^{\circ}\text{C}$	--	42	--	$\mu\text{V}$



Typical Characteristic Curves

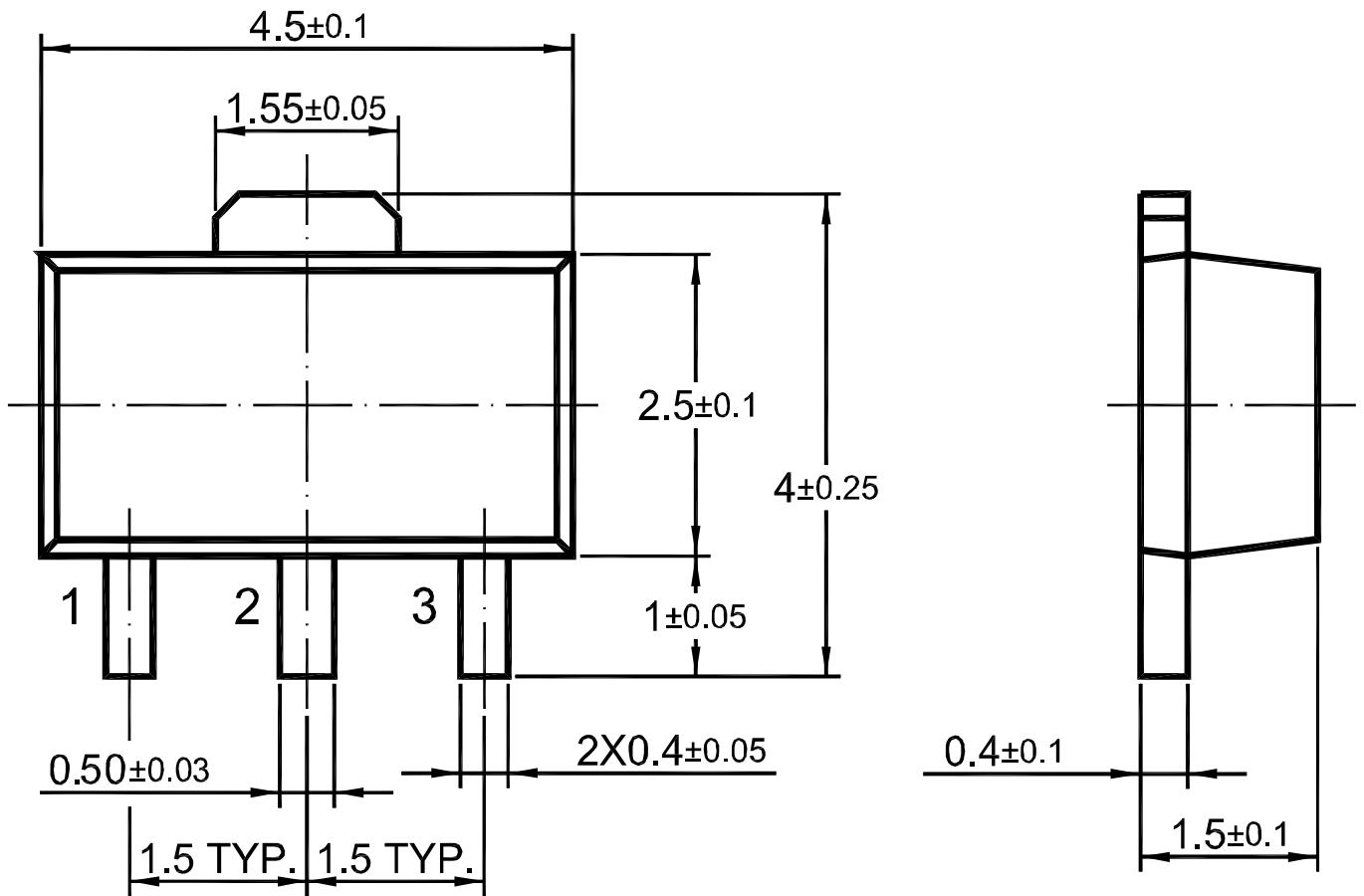




Package Outline

SOT-89

Dimensions in mm



Ordering Information

Device	Package	Shipping
78L05	SOT-89	1,000PCS/Reel&7inches
		3,000PCS/Reel&13inches

## X-ON Electronics

Largest Supplier of Electrical and Electronic Components

*Click to view similar products for [Linear Voltage Regulators](#) category:*

*Click to view products by [DOWO](#) manufacturer:*

Other Similar products are found below :

[LV5684PVD-XH](#) [MCDTSA6-2R](#) [L7815ACV-DG](#) [714954EB](#) [ZMR500QFTA](#) [BA033LBSG2-TR](#) [LV5680P-E](#) [L79M05T-E](#) [L78LR05D-MA-E](#) [NCV317MBTG](#) [NTE7227](#) [MP2018GZD-33-P](#) [MP2018GZD-5-P](#) [LV5680NPVC-XH](#) [LT1054CN8](#) [ZTS6538SE](#) [UA78L09CLP](#) [UA78L09CLPR](#) [CAT6221-PPTD-GT3](#) [MC78M09CDTRK](#) [NCV51190MNTAG](#) [78M05](#) [HT7150-1](#) [UM1540DB-18](#) [XC6234H281VR-G](#) [WL2834CA-6/TR](#) [TPL730F33-5TR](#) [TLS850F1TA](#) [V50](#) [TPS549B22RVFR](#) [UM1540DB-33](#) [WL9200P3-50B](#) [WL9100P3-33B](#) [WL9005D4-33](#) [XC6219B152MR](#) [WL2855K33-3/TR](#) [PJ54BM33SE](#) [PJ9500M25SA](#) [MD7218E33PC1](#) [H7533-2PR](#) [SK7812AU](#) [SD1A30](#) [78L33](#) [TP78L33T3](#) [L78L33ACUTR](#) [SK6513ST3A-50](#) [SK6054D4-09](#) [SK6054D4-18](#) [SK6054D4-11](#) [SK6054D4-10](#) [LM79L12F](#)