

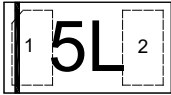
### ■ Features

- Uni-directional ESD protection of one lines
- 80Watts peak pulse power ( $t_p = 8/20\mu s$ )
- Working voltage: 5V
- Junction capacitance: 0.6pF Typ
- Low clamping voltage
- Low leakage current
- IEC 61000-4-2  $\pm 10kV$  contact  $\pm 15kV$  air
- IEC 61000-4-5 (Lightning) 4A ( $8/20\mu s$ )

### ■ Mechanical Data

- Package:DFN1006-2L
- Molding compound flammability rating: UL 94V-0
- RoHS/WEEE Compliant

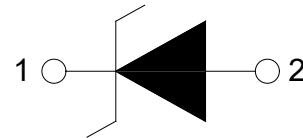
### ■ Ordering Information

Part Number	Package	Marking	Packing	Reel Size
ESD9X5VU	DFN1006-2L		10000 Tape & Reel	7 inches

### ■ Applications

- Cellular handsets and accessories
- Portable Digital Assistants
- Notebooks & Handhelds
- Digital Cameras
- MP3 Players
- Peripherals

### ■ Schematic & PIN Configuration



**■ Absolute Maximum Rating( $T_A=25^{\circ}\text{C}$  unless otherwise Specified)**

Parameters	Symbol	Min	Max	Unit
Peak pulse power ( $t_p=8/20\mu\text{s}$ )@ $25^{\circ}\text{C}$	$P_{pk}$	-	80	W
Peak pulse current ( $t_p=8/20\mu\text{s}$ )@ $25^{\circ}\text{C}$	$I_{pp}$		4	A
ESD (IEC61000-4-2 air discharge) @ $25^{\circ}\text{C}$	$V_{ESD}$	-	$\pm 15$	kV
ESD (IEC61000-4-2 contact discharge) @ $25^{\circ}\text{C}$	$V_{ESD}$	-	$\pm 10$	kV
Junction temperature	$T_J$	-	125	$^{\circ}\text{C}$
Operating temperature	$T_{OP}$	-40	85	$^{\circ}\text{C}$
Storage temperature	$T_{STG}$	-55	150	$^{\circ}\text{C}$
Lead temperature	$T_L$	-	260	$^{\circ}\text{C}$

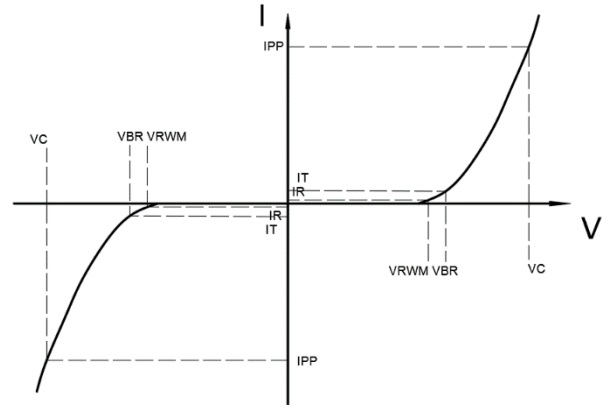
**■ Electrical Characteristics( $T_A=25^{\circ}\text{C}$  unless otherwise Specified)**

Parameter	Symbol	Conditions	Min	Typ	Max	Units
Reverse Stand-off Voltage	$V_{RWM}$				5	V
Reverse Breakdown Voltage	$V_{BR}$	$I_T=1\text{mA}$	6.0			V
Reverse Leakage Current	$I_R$	$V_{RWM}=5\text{V}$			1	$\mu\text{A}$
Clamping Voltage	$V_C$	$I_{PP}=1\text{A}$ ; $t_p=8/20\mu\text{s}$		15		V
Clamping Voltage	$V_C$	$I_{PP}=4\text{A}$ ; $t_p=8/20\mu\text{s}$		20		V
Junction Capacitance	$C_J$	I/O to GND; $V_R=0\text{V}$ ; $f=1\text{MHz}$		0.6		pF

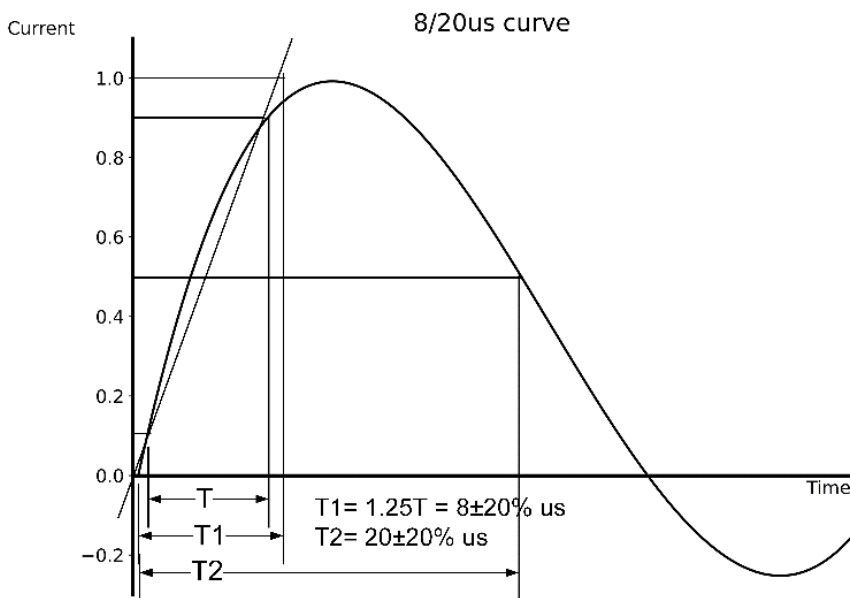


■ Electrical Parameters( $T_A=25^\circ\text{C}$  unless otherwise Specified)

Symbol	Parameters
$V_{RWM}$	Peak Reverse Working Voltage
$I_R$	Reverse Leakage Current @ $V_{RWM}$
$V_{BR}$	Breakdown Voltage @ $I_T$
$I_T$	Test Current
$I_{PP}$	Maximum Reverse Peak Pulse Current
$V_C$	Clamping Voltage @ $I_{PP}$
$I_F$	Forward Current
$V_F$	Forward Voltage @ $I_F$

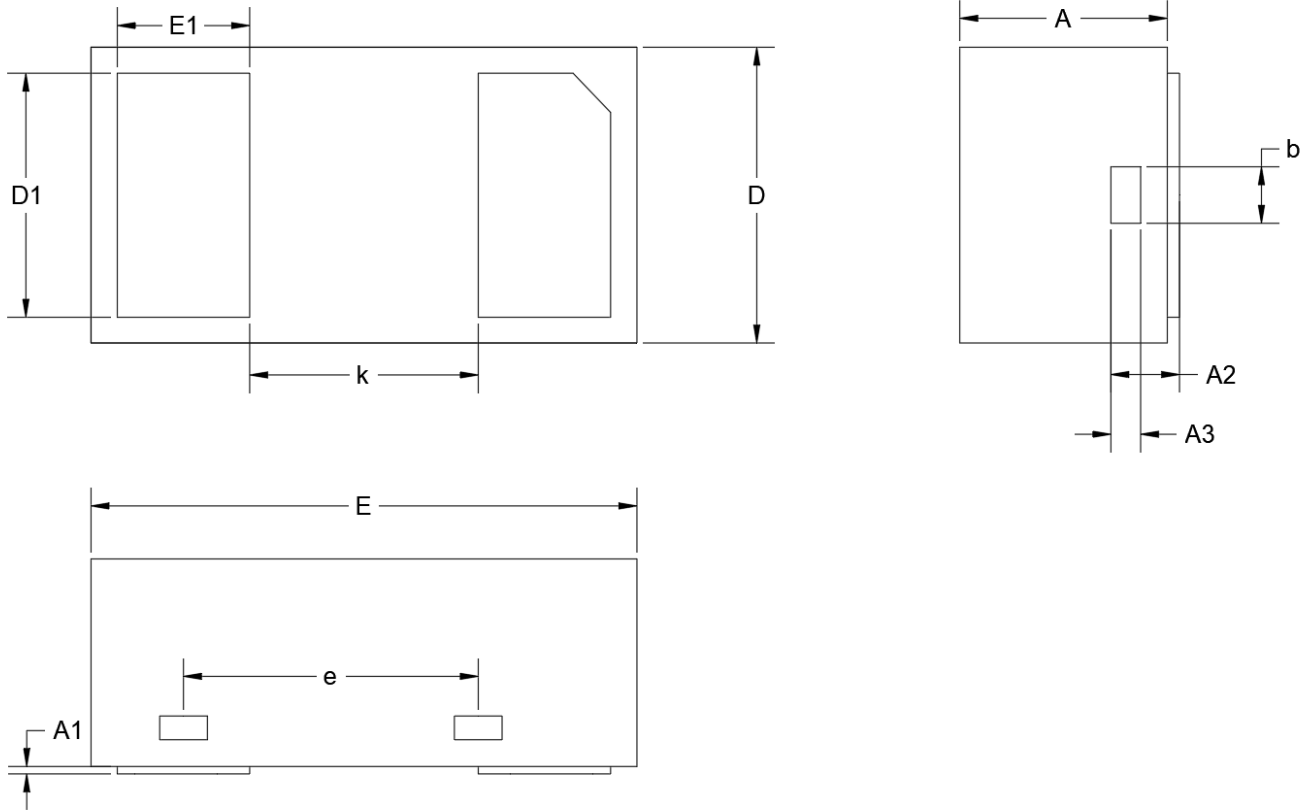


■ Typical Characteristics( $T_A=25^\circ\text{C}$  unless otherwise Specified)





■ Outline Drawing – DFN1006-2L



Unit: mm

Symbol	Min	Nom	Max
A	0.350	0.450	0.550
A1	0.000	0.020	0.050
A2	0.077	0.127	0.207
A3	0.013	0.063	0.113
b	0.070	0.120	0.200
D	0.500	0.600	0.700
D1	0.400	0.500	0.600
D2	0.200	0.300	0.400
E	0.900	1.000	1.100
E1	0.150	0.250	0.350
e	0.360	0.410	0.460
k	0.300	0.400	0.500

## X-ON Electronics

Largest Supplier of Electrical and Electronic Components

*Click to view similar products for [ESD Suppressors / TVS Diodes](#) category:*

*Click to view products by [DOWO](#) manufacturer:*

Other Similar products are found below :

[60KS200C](#) [D18V0L1B2LP-7B](#) [D5V0F4U5P5-7](#) [NTE4902](#) [P4KE27CA](#) [P6KE11CA](#) [P6KE8.2A](#) [SA60CA](#) [SA64CA](#) [SMBJ12CATR](#)  
[SMBJ33CATR](#) [SMBJ6.5A](#) [SMBJ8.0A](#) [ESD101-B1-02ELS E6327](#) [ESD112-B1-02EL E6327](#) [ESD7451N2T5G](#) [19180-510](#) [CPDT-5V0USP-](#)  
[HF](#) [3.0SMCJ33CA-F](#) [3.0SMCJ36A-F](#) [HSPC16701B02TP](#) [JANTX1N6126A](#) [D3V3Q1B2DLP3-7](#) [D55V0M1B2WS-7](#) [SCM1293A-04SO](#)  
[ESD200-B1-CSP0201 E6327](#) [SM12-7](#) [CEN955 W/DATA](#) [VESD12A1A-HD1-GS08](#) [CPDQC5V0-HF](#) [D1213A-01LP4-7B](#) [ESD101-B1-02EL](#)  
[E6327](#) [AOZ8808DI-03](#) [5KP15A](#) [5KP48A](#) [5KP90A](#) [ESD3V3D7-TP](#) [15KPA36A-LF](#) [P4KE56CA](#) [P4KE68A](#) [P4KE91CATR](#) [P6KE120A](#)  
[P6KE13CA](#) [P6KE43CA](#) [P6KE6.8CA](#) [P6KE8.2](#) [P6SMBJ20CA](#) [JANTX1N6072A](#) [SR2835ESKG](#) [SA90CA](#)