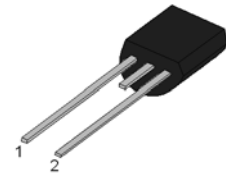




**DESCRIPTION:**

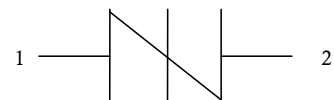
PxxxxEC series thyristors are a type of semiconductor component. They are designed in applications: modems, telephones, line cards, answering machines, FAX machines, SLICs, T1/E1, xDSL, PBXs and more.



TO-92

**FEATURES:**

- Excellent capability of absorbing transient surge.
- Quick response to surge voltage (ns Level).
- Eliminates overvoltage caused by fast rising transients.
- Moisture sensitivity level: Level 1.
- Non degenerative.
- Package way:1000pcs / bag.



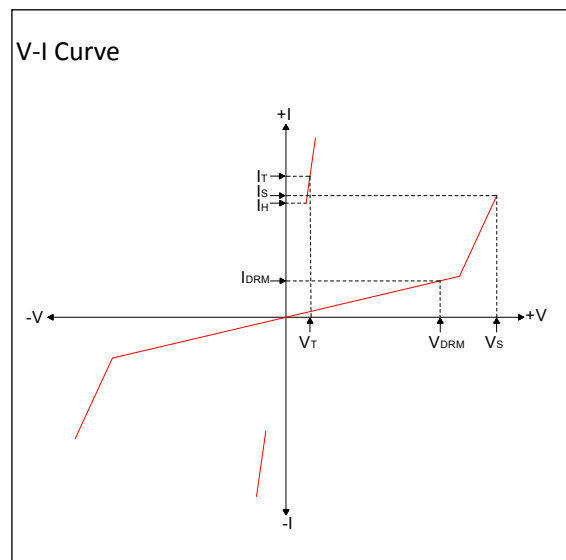
Symbol

**ABSOLUTE MAXIMUM RATINGS** ( $T_A=25^{\circ}\text{C}$ , unless otherwise noted)

Parameter	Symbol	Value	Unit
Storage temperature range	$T_{STG}$	-60 to +150	$^{\circ}\text{C}$
Operating junction temperature range	$T_J$	-40 to +125	$^{\circ}\text{C}$
Repetitive peak pulse current	$I_{PP}$	100	A

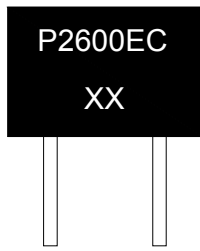
**ELECTRICAL CHARACTERISTICS** ( $T_A=25^{\circ}\text{C}$ )

Symbol	Parameter
$V_{DRM}$	Peak off-state voltage
$I_{DRM}$	Off-state current
$V_S$	Switching voltage
$I_S$	Switching current
$V_T$	On-state voltage
$I_T$	On-state current
$I_H$	Holding current
$C_O$	Off-state capacitance





MARKING



P2600EC: Device Marking Code  
XX: The production cycle

ELECTRICAL CHARACTERISTICS (T<sub>A</sub>=25°C, continued)

Part Number	I <sub>DRM</sub> @V <sub>DRM</sub>		V <sub>S</sub> @I <sub>S</sub>		V <sub>T</sub> @ I <sub>T</sub>		I <sub>H</sub>	C <sub>O</sub> <sup>①</sup>	Marking
	μA	V	V	mA	V	A	mA	pF	
	max		max		max	max	min	max	
P0080EC	1	6	15	800	4	2.2	50	80	P0080EC
P0640EC	1	58	77	800	4	2.2	120	200	P0640EC
P0720EC	1	65	87	800	4	2.2	120	150	P0720EC
P2300EC	1	190	260	800	4	2.2	150	60	P2300EC
P2600EC	1	220	300	800	4	2.2	150	60	P2600EC
P3100EC	1	275	350	800	4	2.2	150	50	P3100EC
P3500EC	1	320	400	800	4	2.2	150	50	P3500EC

① V<sub>S</sub> is measured at 100KV/s

② Off-state capacitance is measured in V<sub>DC</sub>=2V, V<sub>RMS</sub>=1V, f=1MHz

SURGE RATINGS(Temperature range: -40 ~+85°C)

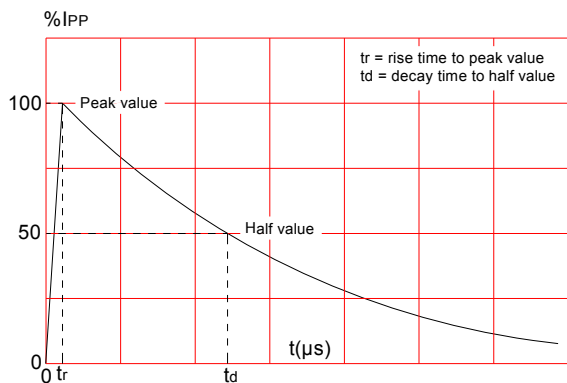
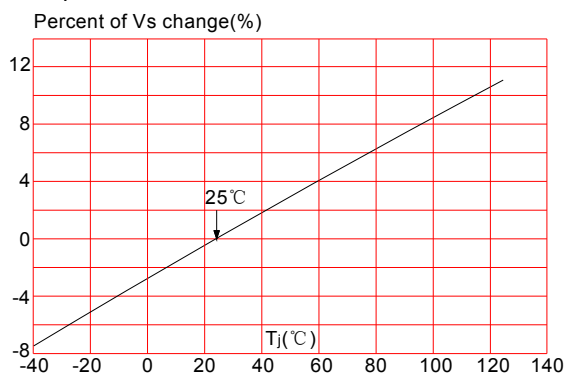
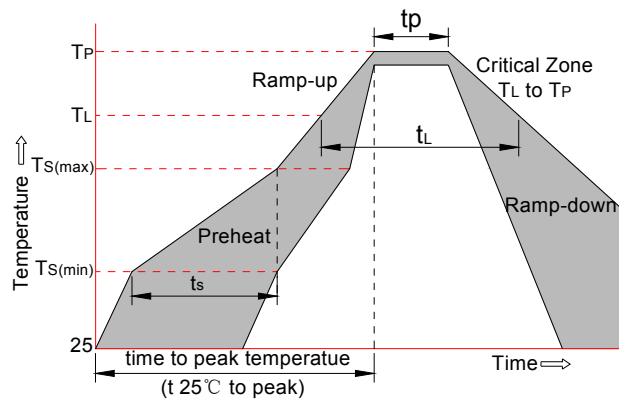
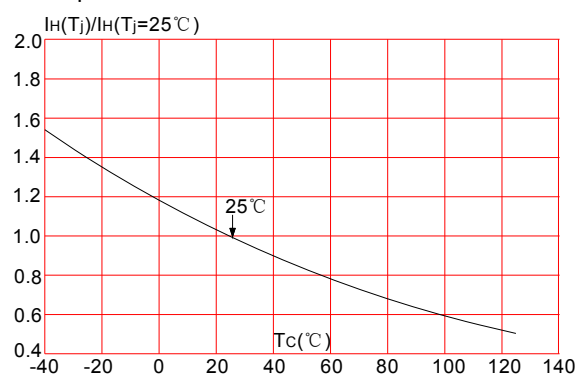
Series	I <sub>PP</sub> (A) min			
	2×10μs	8×20μs	10×360μs	10×1000μs
C	500	400	175	100

ORDERING INFORMATION

<b>P</b>	<b>008</b>	<b>0</b>	<b>E</b>	<b>C</b>
Series code P: SIDACtor	Median voltage	0: Bi-direction 1: Uni-direction	Package type:TO-92-2L	Surge ratings:6KV(10/700μs)

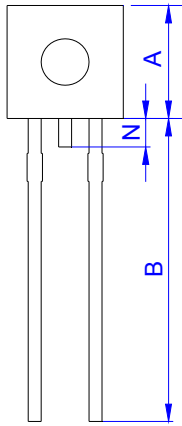
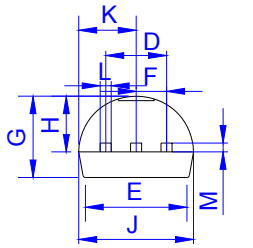
**SOLDERING PARAMETERS**

Reflow Condition		Pb-Free assembly (see FIG.2)
Pre Heat	-Temperature Min ( $T_{s(min)}$ )	+150°C
	-Temperature Max( $T_{s(max)}$ )	+200°C
	-Time (Min to Max) (ts)	60-180 secs.
Average ramp up rate (Liquidus Temp ( $T_L$ ) to peak)		3°C/sec. Max
$T_{s(max)}$ to $T_L$ - Ramp-up Rate		3°C/sec. Max
Reflow	-Temperature( $T_L$ ) (Liquidus)	+217°C
	-Temperature( $t_L$ )	60-150 secs.
Peak Temp ( $T_p$ )		+260(+0/-5)°C
Time within 5°C of actual Peak Temp ( $t_p$ )		30 secs. Max
Ramp-down Rate		6°C/sec. Max
Time 25°C to Peak Temp ( $T_P$ )		8 min. Max
Do not exceed		+260°C

**FIG.1: tr × td pulse waveform**

**FIG.3: Normalized Vs change vs. junction temperature**

**FIG.2: Reflow condition**

**FIG.4: Normalized DC holding current vs. case temperature**




PACKAGE MECHANICAL DATA



TO-92

Ref.	Dimensions			
	Millimeters		Inches	
	Min.	Max.	Min.	Max.
A	4.32	5.33	0.170	0.210
B	12.70	15.00	0.500	0.591
D	2.41	2.67	0.095	0.105
E	-	4.3	-	0.169
F	1.16	1.37	0.046	0.054
G	3.18	4.19	0.125	0.165
H	2.04	2.66	0.080	0.105
J	4.45	5.20	0.175	0.205
K	2.04	2.66	0.080	0.105
L	0.41	0.53	0.016	0.021
M	0.36	0.50	0.014	0.020
N	-	1.52	-	0.060

## X-ON Electronics

Largest Supplier of Electrical and Electronic Components

*Click to view similar products for [Thyristor Surge Protection Devices - TSPD category](#):*

*Click to view products by [DOWO manufacturer](#):*

Other Similar products are found below :

[TT700N22KOFTIMHPSA1](#) [TT820N16KOFTIMHPSA1](#) [MMT08B310T3](#) [BS4200N-2C](#) [BS0060M-3](#) [BEP4200TB](#) [BS1300N-C-F](#) [BS4200N-C-2](#) [BS4000M](#) [BEP0300SB](#) [P0080SB](#) [P0080F](#) [P3500SB](#) [P0720SC](#) [P3100SB](#) [P0720EC](#) [P4500Q22CLRP](#) [P0080SC](#) [P0640SC](#) [P4200SC](#) [P0640SB](#) [P0080SB](#) [P3100SC](#) [P4200SB](#) [P0640SC](#) [P2300SC](#) [P2300LA](#) [SKKH 106/12E](#) [SKKH 106/18E](#) [SKKH 162/14E](#) [SKKH 57/16E](#) [SKKH 72/08E](#) [NP3100SBT3G](#) [SK20NHMH10](#) [P3800FNLTP](#) [TB2300L-13-F](#) [TISP4030L1BJR-S](#) [P4800MEL](#) [TISP4P035L1NR-S](#) [TISP4011H1BJR-S](#) [P2600SDLRP](#) [SKKH 72/16E](#) [SKKH 72/20E H4](#) [SKKH92/16E](#) [SKKH 132/16E](#) [SKKH 172/16E](#) [SKKH 106/16E](#) [BEP3100TA](#) [TISP4015H1BJR-S](#) [TISP4015L1AJR-S](#)