

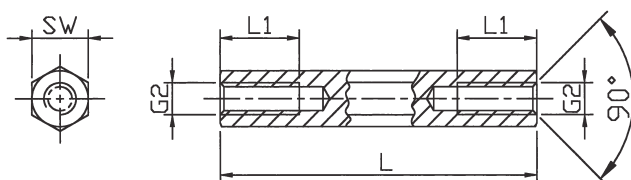
spacer bolt

[Steel, metric thread]



Standard range – spacer bolts [Zinc, plated]

EXECUTION DII [Internal / internal thread]



Internal thread lengths [mm]

L	L1 at M2.5 to M5	L1 at M2	L1 at M6	L1 at M8
5	5	5	5	
8	8	8	8	
10	10	10	10	
12	12	6	12	
15	15	6	15	15
18	9	6	9	
20	10	6	10	20
from 30	10	6	12	14

Order No.	Execution	Material	SW* (hexagon)	Thread	Standard lengths in mm
121 x (length)	DII	Steel	SW4	M2	5, 8, 10, 12, 15, 18, 20, 25, 30, 35, 40
1212 x	DII	Steel	SW4	M2.5	5, 8, 10, 12, 15, 18, 20, 25, 30, 35, 40
123 x	DII	Steel	SW5	M3	5, 8, 10, 12, 15, 18, 20, 25, 30, 35, 40, 45, 50
124 x	DII	Steel	SW5.5	M3	5, 8, 10, 12, 15, 18, 20, 25, 30, 35, 40, 45, 50, 55, 60, 65, 70
125 x	DII	Steel	SW6	M3	5, 8, 10, 12, 15, 18, 20, 25, 30, 35, 40, 45, 50, 55, 60, 65, 70, 75, 80, 85, 90, 95, 100
126 x	DII	Steel	SW7	M4	5, 8, 10, 12, 15, 18, 20, 25, 30, 35, 40, 45, 50, 55, 60, 65, 70, 75, 80, 85, 90, 95, 100
127 x	DII	Steel	SW8	M4	5, 8, 10, 12, 15, 18, 20, 25, 30, 35, 40, 45, 50, 55, 60, 65, 70, 75, 80, 85, 90, 95, 100
128 x	DII	Steel	SW8	M5	8, 10, 12, 15, 18, 20, 25, 30, 35, 40, 45, 50, 55, 60, 65, 70, 75, 80, 85, 90, 95, 100
129 x	DII	Steel	SW10	M6	10, 12, 15, 18, 20, 25, 30, 35, 40, 45, 50, 55, 60, 65, 70, 75, 80, 85, 90, 95, 100
1213 x	DII	Steel	SW13	M8	15, 20, 25, 30, 35, 40, 45, 50, 55, 60, 65, 70, 75, 80, 85, 90, 95, 100

*SW: width across flats

Ordering example: 129 x 50 = DII / St / SW10 / M6 x 50

X-ON Electronics

Largest Supplier of Electrical and Electronic Components

Click to view similar products for [Standoffs & Spacers](#) category:

Click to view products by [Dremec](#) manufacturer:

Other Similar products are found below :

[M0516-3-N](#) [M0518-3-N](#) [M0521-3-N](#) [M0524-3-N](#) [M0532-35-N](#) [M0543-4-AL](#) [M0544-3-N](#) [M0545-3-AL](#) [M0553-3-N](#) [M0564-4-N](#) [M0608-5-SS](#) [M0609-5-SS](#) [M0610-35-AL](#) [M0613-3-N](#) [M0653-35-N](#) [M0654-4-SS](#) [M0655-5-AL](#) [M0660-4-AL](#) [M0660-4-N](#) [M0670-35-N](#) [M0671-5-N](#) [M0671-5-SS](#) [M0722-5-N](#) [M0725-6-N](#) [M0731-4-N](#) [M0904-B-25-AL](#) [M1273-2545-AL](#) [M1273-3005-AL](#) [M1274-3005-AL](#) [M1303-3506-AL](#) [M1307-3506-AL](#) [M1313-3005-N](#) [M1313-4007-AL](#) [M1314-3005-AL](#) [M1314-3005-SS](#) [M1315-3005-SS](#) [M1315-4007-N](#) [M1317-3506-AL](#) [M1317-4007-SS](#) [M1318-3005-SS](#) [M1320-3005-AL](#) [M1320-3005-N](#) [M1321-3005-SS](#) [M1321-4007-AL](#) [M1322-4007-N](#) [M1324-3005-N](#) [M1326-3005-AL](#) [M1326-4007-SS](#) [M1331-4007-SS](#) [M1577-B-4007-B](#)