

Adapters

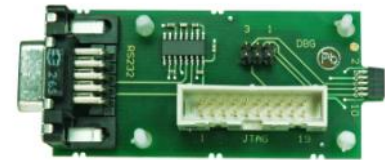
JTAG Adapter (Part No. 27863)

Dimensions	23 x 22 mm
IP protection	IP00
Connections	30 pin ribbon cable (JTAGICE mkII) 10 pin serial connector (2-rowed, 1.27 mm pitch)



SAM ICE Adapter (Part No. 28337)

Dimensions	82 mm (with connector) x 35 mm
IP protection	IP00
Operating temperature	0°C ... 65°C
Power supply	over USB
Connections	RS232, JTAG, deUSB Target



deRFtoRCB Adapter (Part No. 28216)

Dimensions	52 x 52 mm
Control and display elements	3 x LED (red), 1 x button
Power supply	2 batteries, size AAA (1.8 - 3.6 VDC)
Connections	2 x 23 pin serial connector (for deRFmega128) 2 x 30 pin I/O connector (for STB) 1 x 10 pin I/O connector (JTAG) 1 x 6 pin I/O connector (Debug/Trace)
Interfaces	1 x JTAG, 1 x Debug/Trace



RCB Breakout Board RS232 Cable (Part No. 26790)

Length	300 mm
Interfaces	SUB D 9 3 pin serial connector



X-ON Electronics

Largest Supplier of Electrical and Electronic Components

Click to view similar products for [dresden](#) manufacturer:

Other Similar products are found below :

[28560](#) [31645](#) [28216](#)