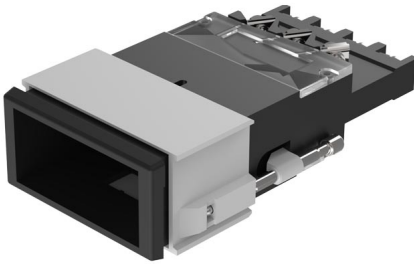


EAO – Your Expert Partner for Human Machine Interfaces

03-617.011 - Illuminated pushbutton actuator single-headed

03-617.011 - Illuminated pushbutton actuator single-headed



Attention: The preview is based on a sample product. This can differ from your current configuration.

Mounting

Mounting cut-out Design 21,2 mm x 41,2 mm
flush

Front

Front dimension 24 mm x 48 mm
Front bezel colour black
Front bezel material Plastic
Front shape rectangular

Other Attributes

Weight 0,075 kg

Operating-/Indication part

Lens illumination illuminative

IP-Rating

Front protection IP40

Connection Method

Terminal Screw terminal

Actuator

Switching action Momentary
Housing colour black
Housing material Plastic

Switching element

Switching system Snap-action switching element
Contacts 2 C
Switching voltage 400 V AC
Switching current 10 A
Contact material Silver

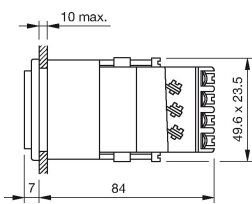
Function

Illuminated pushbutton

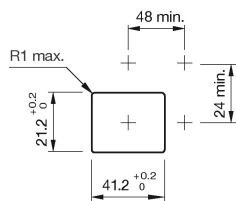
EAO – Your Expert Partner for Human Machine Interfaces

03-617.011 - Illuminated pushbutton actuator single-headed

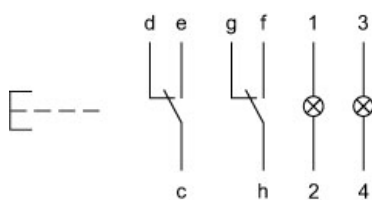
Dimensions



Mounting cut-outs



Wiring diagram



Additional information

Has two independent lamp bases
Light barrier ordered separately

Legend

Contacts: C = Changeover
Switching action: B = Momentary

X-ON Electronics

Largest Supplier of Electrical and Electronic Components

Click to view similar products for [Pushbutton Switches](#) category:

Click to view products by [EAO](#) manufacturer:

Other Similar products are found below :

[8940K2012](#) [LW1L-M1C10V-A](#) [LW1L-M1C70-A](#) [LW2L-A1C20M-GD](#) [LW2L-M1C20M-A](#) [60324L](#) [M22-D-R-GB0/K11](#) [M7E-HRN2](#)
[67021K512](#) [67081K512X](#) [701PB580](#) [7199K101](#) [810K12910](#) [810KSV30B](#) [MML21EA2ADK](#) [MML21KA3ABK](#) [MML23KA3AC05K-001](#)
[MML23KW3AA01W](#) [8418K2](#) [8442K3](#) [8450K1](#) [860K11911T01A](#) [861901](#) [861K11911T01A07](#) [861K13810T00A14](#) [861K13911](#)
[8646AB6X718UL](#) [8646ABUL](#) [9001KXRK](#) [907AYY100](#) [PMHD155A1](#) [9533CD4+U574+U4922](#) [95-414.000](#) [99-450.837](#) [99-453.837](#)
[PV3H2B0NN-341](#) [1203MRA](#) [A22NZBGANGA](#) [A22NZBNANGA](#) [A22NZMPATRA](#) [A2PMA1X03EC56](#) [A3A-5123-02](#) [A3A-7140](#) [A3A-7310](#) [A3A-7340](#) [A3U-TMW-A2C-5M](#) [A595](#) [12037A2ULCSA](#) [ABD122N-B](#) [1211390004](#)