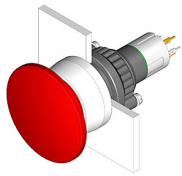


# EAO – Your Expert Partner for Human Machine Interfaces

## 14-436.036 - Mushroom-head pushbutton actuator illuminated

### 14-436.036 - Mushroom-head pushbutton actuator illuminated



*Attention: The preview is based on a sample product. This can differ from your current configuration.*

#### Mounting

Mounting cut-out  
Design Ø 22,3 mm  
raised

#### Front

Front dimension  
Front shape Ø 29 mm  
round

#### Other Attributes

Weight 0,015 kg

#### Operating-/Indication part

Lens illumination illuminative

#### IP-Rating

Front protection IP67

#### Connection Method

Terminal Universal 2.0 x 0.5 mm

#### Actuator

Switching action Momentary  
Housing colour black  
Housing material Plastic

#### Switching element

Switching system Low-level element  
Contacts 1 NC  
Switching current 0.1 A  
Switching voltage 42 V AC/DC  
Contact material

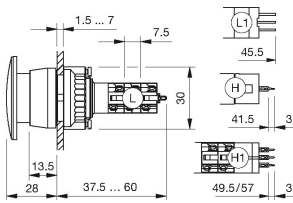
#### Function

Mushroom-head pushbutton

# EAO – Your Expert Partner for Human Machine Interfaces

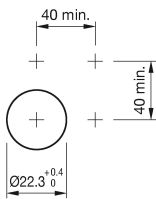
## 14-436.036 - Mushroom-head pushbutton actuator illuminated

### Dimensions

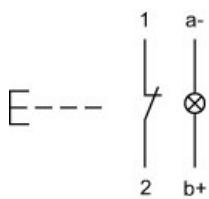


H = Universal terminal 2.0 x 0.5 mm

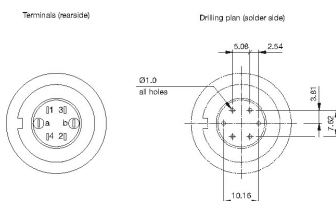
### Mounting cut-outs



### Wiring diagram



### Component layout



### Legend

Contacts: NC = Normally closed  
Switching action: B = Momentary

## X-ON Electronics

Largest Supplier of Electrical and Electronic Components

*Click to view similar products for [Switch Actuators](#) category:*

*Click to view products by [EAO](#) manufacturer:*

Other Similar products are found below :

[LW1B-A0L](#) [LW1B-M0](#) [680-4000-00](#) [704.012.618](#) [704.096.0](#) [704.411.018I](#) [704.412.0](#) [704.633.1](#) [704.730.1](#) [704.733.0](#) [84-1221.7](#) [862.8102](#)  
[G6083](#) [9PA24](#) [A0107X](#) [A019307](#) [ADC-418G](#) [12MA7](#) [ASDHHY-B](#) [HW1F-3G](#) [HW1M-L2222](#) [HW4S-31L](#) [200-.704-00](#) [JS-10008](#) [JS-](#)  
[10083](#) [JS-10118](#) [JS-10133](#) [JS-10277](#) [JS-10389](#) [JS-150](#) [JS-552](#) [JS-555](#) [JS-68](#) [JS-6-B](#) [JS-91](#) [JS-94](#) [22-211.011](#) [9001KXSDC](#) [92-458.500](#)  
[SAPT654133](#) [2PA3](#) [SW53AA2](#) [302561](#) [LW2L-A0](#) [3E-10.4](#) [468-10243-001](#) [51-030.005](#) [JM-13](#) [JS-10120](#) [JS-138-B](#)