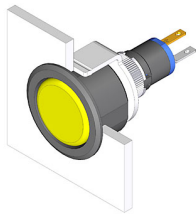


# EAO – Your Expert Partner for Human Machine Interfaces

18-267.035 - Pushbutton actuator

## 18-267.035 - Pushbutton actuator



*Attention: The preview is based on a sample product. This can differ from your current configuration.*

### Mounting

Design flush

### Front

Front bezel colour black  
Front bezel material Plastic

### Other Attributes

Weight 0,002 kg

### Operating-/Indication part

Lens illumination illuminative

### IP-Rating

Front protection IP40

### Connection Method

Terminal Solder

### Actuator

Switching action Maintained  
Housing colour black  
Housing material Plastic

### Switching element

Switching system Snap-action switching element  
Contacts 1 NO  
Switching voltage 42 V AC/DC  
Switching current 0.1 A  
Contact material

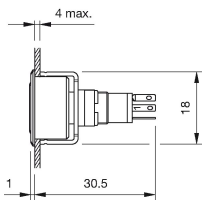
### Function

Pushbutton

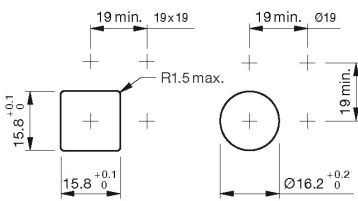
# EAO – Your Expert Partner for Human Machine Interfaces

18-267.035 - Pushbutton actuator

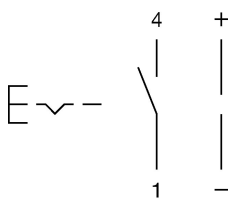
## Dimensions



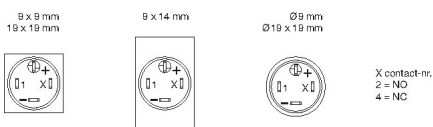
## Mounting cut-outs



## Wiring diagram



## Component layout



## Additional information

+/- terminals are not connected

## Legend

Contacts: NO = Normally open

Switching action: C = Maintained

## X-ON Electronics

Largest Supplier of Electrical and Electronic Components

*Click to view similar products for [Pushbutton Switches](#) category:*

*Click to view products by [EAO](#) manufacturer:*

Other Similar products are found below :

[8940K2012](#) [LW1L-M1C10V-A](#) [LW1L-M1C70-A](#) [LW2L-A1C20M-GD](#) [LW2L-M1C20M-A](#) [60324L](#) [M22-D-R-GB0/K11](#) [M7E-HRN2](#)  
[67021K512](#) [67081K512X](#) [701PB580](#) [7199K101](#) [810K12910](#) [810KSV30B](#) [MML21EA2ADK](#) [MML21KA3ABK](#) [MML23KA3AC05K-001](#)  
[MML23KW3AA01W](#) [8418K2](#) [8442K3](#) [8450K1](#) [860K11911T01A](#) [861901](#) [861K11911T01A07](#) [861K13810T00A14](#) [861K13911](#)  
[8646AB6X718UL](#) [8646ABUL](#) [9001KXRK](#) [907AYY100](#) [PMHD155A1](#) [9533CD4+U574+U4922](#) [95-414.000](#) [99-450.837](#) [99-453.837](#)  
[PV3H2B0NN-341](#) [1203MRA](#) [A22NZBGANGA](#) [A22NZBNANGA](#) [A22NZMPATRA](#) [A2PMA1X03EC56](#) [A3A-5123-02](#) [A3A-7140](#) [A3A-7310](#) [A3A-7340](#) [A3U-TMW-A2C-5M](#) [A595](#) [12037A2ULCSA](#) [ABD122N-B](#) [1211390004](#)