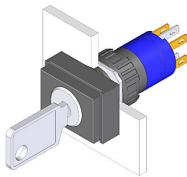


EAO – Your Expert Partner for Human Machine Interfaces

51-295.022D - Keylock switch 2 positions

51-295.022D - Keylock switch 2 positions



Attention: The preview is based on a sample product. This can differ from your current configuration.

Mounting

Mounting cut-out Ø 16 mm
Design raised

Front

Front dimension 18 mm x 24 mm
Front shape rectangular

Other Attributes

Weight 0,016 kg

Operating-/Indication part

Switching angle 90° right

IP-Rating

Front protection IP65

Connection Method

Terminal Solder 2.8 x 0.5 mm

Actuator

Switching action Rest(a) - Maintain

Switching element

Rotary positions 2
Switching system Snap-action switching element
Switching current 5 A
Contacts 1 NC + 1 NO
Contact material
Switching voltage 250 V AC

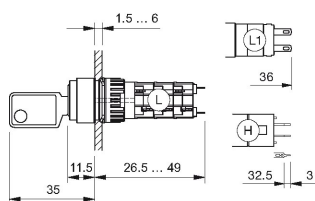
Function

Keylock switch

EAO – Your Expert Partner for Human Machine Interfaces

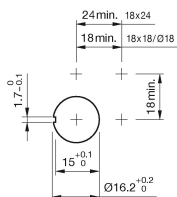
51-295.022D - Keylock switch 2 positions

Dimensions

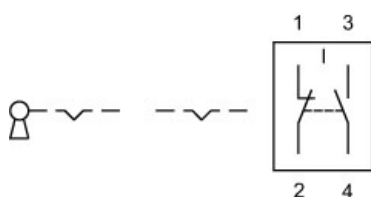


H = Universal terminal 2.0 x 0.5 mm

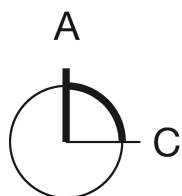
Mounting cut-outs



Wiring diagram



Switching positions



Additional information

Standard lock: DOM 311

Two keys are supplied with each key lock switch

Optional lock numbers on request

Legend

Contacts: NC = Normally closed, NO = Normally open

Switching action: A = Rest, C = Maintained

X-ON Electronics

Largest Supplier of Electrical and Electronic Components

Click to view similar products for [Keylock Switches](#) category:

Click to view products by [EAO](#) manufacturer:

Other Similar products are found below :

[89496-09](#) [58J1007](#) [58J8A45-01B05N](#) [58J9A90-01C02N](#) [719-0201-000](#) [719-0202-000](#) [719-0702-000](#) [719-5504-000](#) [84800-04](#) [88672-00](#)
[GKNC33L](#) [GKNC3L](#) [PVA2OAH5](#) [HA1K-2C2VA-2](#) [1571487-1](#) [KEY-AS6](#) [KH3C-20C](#) [8928K493](#) [2SWK131AL102](#) [51-414.036D](#) [HW1K-31BF20](#) [Y1112-2027CLFT](#) [51-155.025D](#) [51-195.025D](#) [51-378.AD](#) [1-1437597-8](#) [58J8A36-01B04N](#) [58M1422](#) [86945-05](#) [719-0204-000](#) [719-0205-000](#) [719-0801-000](#) [719-0804-000](#) [88422-18](#) [58J8A90-01B02N](#) [58J8A90-01C02N](#) [58J9P36-01B09N](#) [58J8A36-01C03N](#) [GKRA3K1A2-F03-C](#) [51-295.025D](#) [51-378.F22D](#) [51-411.036D](#) [58J9A60-01C02N](#) [51-196.025D](#) [51-382.022D](#) [HW4K-2AF11](#) [CW4K-2AE20](#) [M81E0600](#)
[719-0802-000](#) [719-5501-000](#)