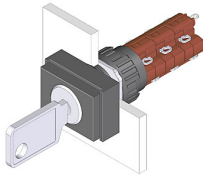


# EAO – Your Expert Partner for Human Machine Interfaces

## 51-297.025D2 - Keylock switch 2 positions

### 51-297.025D2 - Keylock switch 2 positions



*Attention: The preview is based on a sample product. This can differ from your current configuration.*

#### Mounting

Mounting cut-out Design  $\varnothing$  16 mm raised

#### Front

Front dimension 18 x 24 mm  
Front shape rectangular  
Front material Plastic  
Front colour black

#### Other Attributes

Weight 0.016 kg

#### Operating-/Indication part

Switching angle  $C = 90^\circ$

#### IP-Rating

Front protection IP65

#### Connection Method

Terminal Solder

#### Actuator

Key remove A  
Switching action Rest - Maintained

#### Switching element

Rotary positions 2  
Switching system Snap-action switching element  
Switching current 5 A  
Contacts 3 NC + 3 NO  
Contact material Gold  
Switching voltage 250 V AC

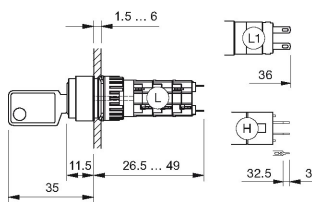
#### Function

Keylock switch

# EAO – Your Expert Partner for Human Machine Interfaces

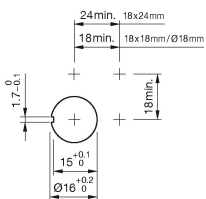
## 51-297.025D2 - Keylock switch 2 positions

### Dimensions

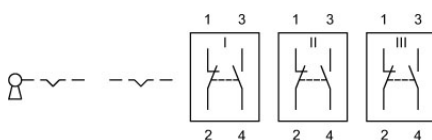


H = Universal terminal 2.0 x 0.5 mm

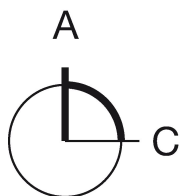
### Mounting cut-outs



### Wiring diagram



### Switching positions



### Additional information

Standard lock: DOM 311

Two keys are supplied with each key lock switch

Optional lock numbers on request

### Legend

Contacts: NC = Normally closed, NO = Normally open

Switching action: A = Rest, C = Maintained

## X-ON Electronics

Largest Supplier of Electrical and Electronic Components

*Click to view similar products for [Keylock Switches](#) category:*

*Click to view products by [EAO](#) manufacturer:*

Other Similar products are found below :

[89496-09](#) [58J1007](#) [58J8A45-01B05N](#) [719-0201-000](#) [719-0202-000](#) [719-0702-000](#) [719-5504-000](#) [84800-04](#) [GKNC33L](#) [GKNC3L](#)  
[PVA2OAH5](#) [HA1K-2C2VA-2](#) [14-235.022K](#) [AS6H-2K2A](#) [AS6M-2K1B](#) [AS6Q-2K2A](#) [AS6Q-3K2A](#) [1571487-1](#) [KEY-AS6](#) [KH3C-20C](#)  
[8928K493](#) [2SWK131AL102](#) [AS6M-2K1A](#) [AS6Q-2K1PB](#) [51-401.036D](#) [51-414.036D](#) [HW1K-31BF20](#) [HW1K-3HF20](#) [Y1112-2027CLFT](#)  
[51-195.025D](#) [51-378.AD](#) [51-404.036D](#) [51-405.036D](#) [1-1437597-8](#) [58J8A36-01B04N](#) [58M1422](#) [86945-05](#) [719-0204-000](#) [719-0205-000](#)  
[719-0801-000](#) [719-0804-000](#) [719-0805-000](#) [88422-18](#) [58J8A90-01B02N](#) [58J8A90-01C02N](#) [58J9P36-01B09N](#) [58J8A36-01C03N](#)  
[GKRA3K1A2-F03-C](#) [GKBB14L6](#) [14-236.025K1020](#)