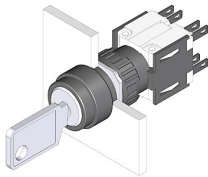


EAO – Your Expert Partner for Human Machine Interfaces

51-378.F22D - Keylock switch 3 positions

51-378.F22D - Keylock switch 3 positions



Attention: The preview is based on a sample product. This can differ from your current configuration.

Mounting

Mounting cut-out Design \varnothing 16 mm raised

Front

Front dimension \varnothing 18 mm
Front shape round

Other Attributes

Weight 0,025 kg

Operating-/Indication part

Switching angle

IP-Rating

Front protection IP65

Connection Method

Terminal Solder 2.8 x 0.5 mm

Actuator

Switching action Maintain(a) - Rest(a) - Momentary

Switching element

Rotary positions 3
Switching system Snap-action switching element
Switching current 5 A
Contacts 2 NC + 2 NO
Contact material
Switching voltage 250 V AC

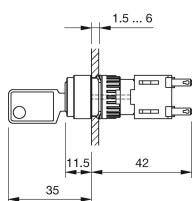
Function

Keylock switch

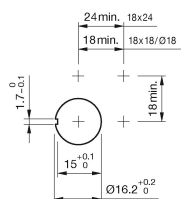
EAO – Your Expert Partner for Human Machine Interfaces

51-378.F22D - Keylock switch 3 positions

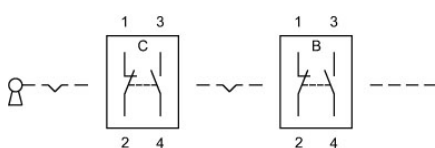
Dimensions



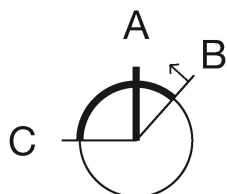
Mounting cut-outs



Wiring diagram



Switching positions



Additional information

Standard lock: DOM 311

Two keys are supplied with each key lock switch

Optional lock numbers on request

Legend

Contacts: NC = Normally closed, NO = Normally open

Switching action: A = Rest, B = Momentary, C = Maintained

X-ON Electronics

Largest Supplier of Electrical and Electronic Components

Click to view similar products for [Keylock Switches](#) category:

Click to view products by [EAO](#) manufacturer:

Other Similar products are found below :

[89496-09](#) [58J1007](#) [58J8A45-01B05N](#) [719-0201-000](#) [719-0202-000](#) [719-0702-000](#) [719-5504-000](#) [84800-04](#) [GKNC33L](#) [GKNC3L](#)
[PVA2OAH5](#) [HA1K-2C2VA-2](#) [14-235.022K](#) [AS6H-2K2A](#) [AS6M-2K1B](#) [AS6Q-2K2A](#) [AS6Q-3K2A](#) [1571487-1](#) [KEY-AS6](#) [KH3C-20C](#)
[8928K493](#) [2SWK131AL102](#) [AS6M-2K1A](#) [AS6Q-2K1PB](#) [51-401.036D](#) [51-414.036D](#) [HW1K-31BF20](#) [HW1K-3HF20](#) [Y1112-2027CLFT](#)
[51-195.025D](#) [51-378.AD](#) [51-404.036D](#) [51-405.036D](#) [1-1437597-8](#) [58J8A36-01B04N](#) [58M1422](#) [86945-05](#) [719-0204-000](#) [719-0205-000](#)
[719-0801-000](#) [719-0804-000](#) [719-0805-000](#) [88422-18](#) [58J8A90-01B02N](#) [58J8A90-01C02N](#) [58J9P36-01B09N](#) [58J8A36-01C03N](#)
[GKRA3K1A2-F03-C](#) [GKBB14L6](#) [14-236.025K1020](#)