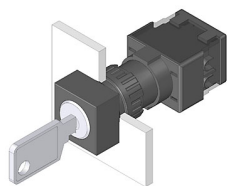


# EAO – Your Expert Partner for Human Machine Interfaces

## 61-2205.0/D - Keylock switch actuator 2 positions square

### 61-2205.0/D - Keylock switch actuator 2 positions square



*Attention: The preview is based on a sample product. This can differ from your current configuration.*

#### Mounting

Mounting cut-out  $\varnothing$  16 mm

#### Other Attributes

Weight 0.065 kg

#### Operating-/Indication part

Switching angle  $C = 90^\circ$

#### IP-Rating

Front protection IP 65

#### Actuator

Key remove A + C  
Switching action Rest - Maintained

#### Switching element

Rotary positions 2

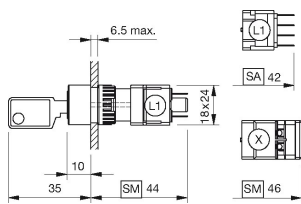
#### Function

Keylock switch

# EAO – Your Expert Partner for Human Machine Interfaces

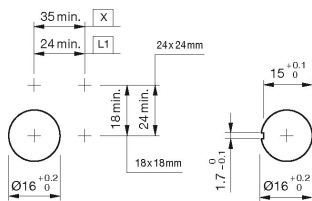
## 61-2205.0/D - Keylock switch actuator 2 positions square

### Dimensions



L1 = Solder terminal 2.8 x 0.5 mm

### Mounting cut-outs



L1 = Solder terminal 2.8 x 0.5 mm

### Wiring diagram



### Additional information

Standard lock: DOM 311

Two keys are supplied with each key lock switch

Optional lock numbers on request

If mounted with anti-twist device, the lug is on the left side

Anti-twist ring not needed by using anti-twist device

### Legend

Switching action: A = Rest, C = Maintained

## X-ON Electronics

Largest Supplier of Electrical and Electronic Components

*Click to view similar products for [Switch Actuators](#) category:*

*Click to view products by [EAO](#) manufacturer:*

Other Similar products are found below :

[LW1B-A0L](#) [LW1B-M0](#) [680-4000-00](#) [704.012.618](#) [704.096.0](#) [704.411.018I](#) [704.412.0](#) [704.633.1](#) [704.730.1](#) [704.733.0](#) [84-1221.7](#) [862.8102](#)  
[G6083](#) [9PA24](#) [A0107X](#) [A019307](#) [ADC-418G](#) [12MA7](#) [ASDHHY-B](#) [HW1F-3G](#) [HW1M-L2222](#) [HW4S-31L](#) [200-.704-00](#) [JS-10008](#) [JS-](#)  
[10083](#) [JS-10118](#) [JS-10133](#) [JS-10277](#) [JS-10389](#) [JS-150](#) [JS-552](#) [JS-555](#) [JS-68](#) [JS-6-B](#) [JS-91](#) [JS-94](#) [22-211.011](#) [9001KXSDC](#) [92-458.500](#)  
[SAPT654133](#) [2PA3](#) [SW53AA2](#) [302561](#) [LW2L-A0](#) [3E-10.4](#) [468-10243-001](#) [51-030.005](#) [JM-13](#) [JS-10120](#) [JS-138-B](#)