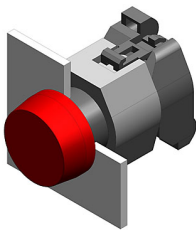


EAO – Your Expert Partner for Human Machine Interfaces

704.000.5 - Indicator actuator full-face illumination

704.000.5 - Indicator actuator full-face illumination



Attention: The preview is based on a sample product. This can differ from your current configuration.

Mounting

Mounting cut-out Ø 22.5 mm
Design raised

Front

Front shape round
Front dimension Ø 29 mm

Other Attributes

Weight 0.050 kg
Marking cap colour white
Marking cap optics translucent
Marking cap illumination illuminativ (LED and filament lamp)

Operating-/Indication part

Lens cap colour green
Lens cap optical effect transparent
Lens cap material Plastic

IP-Rating

Front protection IP 65

Connection Method

Terminal Screw

Actuator

Housing material Plastic
Housing colour grey

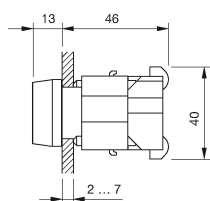
Function

Indicator

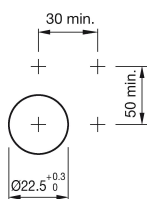
EAO – Your Expert Partner for Human Machine Interfaces

704.000.5 - Indicator actuator full-face illumination

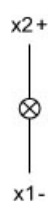
Dimensions



Mounting cut-outs



Wiring diagram



Additional information

Filament lamp or LED

X-ON Electronics

Largest Supplier of Electrical and Electronic Components

Click to view similar products for [Industrial Panel Mount Indicators / Switch Indicators](#) category:

Click to view products by [EAO](#) manufacturer:

Other Similar products are found below :

[LW1A-P1-GD](#) [LW1A-P1-W](#) [01-931.3](#) [01-152.025](#) [73.362.4028.0](#) [750-1520](#) [9001OA120](#) [A0142N5](#) [A3DT-500Y](#) [AL6M-LK3-R](#) [AL6M-P7P-A](#) [AOLQW-2B0600](#) [AP1M255-A](#) [APD106LN-G](#) [APD106LN-S](#) [APN1126-G](#) [APS122DN-W](#) [ASLWLD-G](#) [ASLWLD-R](#) [ATN2100](#) [AYLW4L-A](#) [18-237.035](#) [18-945](#) [HW1A-L1-GD](#) [HW1A-P2-GL](#) [HW1X-BM411-R](#) [HW2A-L1-GL](#) [HWAZ1N-OB](#) [PA2100/2](#) [PA2200/1](#) [PA2SHIELD](#) [PAMR25](#) [LA3P-1C03V-Y](#) [96-923.5](#) [A0244J2](#) [LSPD-120A](#) [LSPD-1Y](#) [LSPD-6A](#) [LSPD-6DA](#) [LSPD-6DW](#) [LSPD-6DY](#) [LSPD-6R](#) [LSPD-6W](#) [18-946](#) [AL6H-LK3-A](#) [AL6H-P4-JW](#) [AL6M-LK1-MG](#) [AP8M155-G](#) [APD106LN-W](#) [APN106L-O](#)