

EAO – Your Expert Partner for Human Machine Interfaces

704.101.018 - Selector switch 2 positions long lever round - Actuator

704.101.018 - Selector switch 2 positions long lever round - Actuator



Attention: The preview is based on a sample product. This can differ from your current configuration.

Attribute

Design	flush
Front dimension	Ø 35 mm
Front form	round
IP front protection	IP65
Mounting cut-out	Ø 30.5 mm
Front bezel colour	Nature
Front bezel material	Aluminium
Front bezel surface	anodised
Lever colour	Black
Lever illumination	non illuminative
Lever material	plastic
Lever shape	long
Rotary positions	2
Switching action	Rest - Maintained
Switching angle	90° right / -45° ... +45°
Weight	0.056 kg

Schaltelement

max. number of switching elements	3
-----------------------------------	---

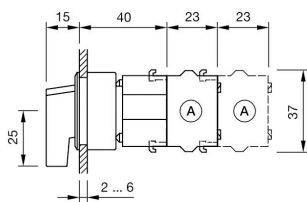
Function

Selector switch

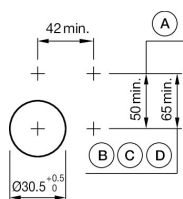
EAO – Your Expert Partner for Human Machine Interfaces

704.101.018 - Selector switch 2 positions long lever round - Actuator

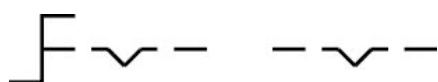
Dimensions



Mounting cut-outs



Wiring diagrams



Additional information

Max. 3 switching elements can be clipped on
The colour of anodised aluminium parts can vary due to technical production reasons
Max. 3 switching elements can be clipped on

X-ON Electronics

Largest Supplier of Electrical and Electronic Components

Click to view similar products for [Switch Actuators](#) category:

Click to view products by [EAO](#) manufacturer:

Other Similar products are found below :

[LW1B-A0L](#) [LW1B-M0](#) [680-4000-00](#) [704.012.618](#) [704.096.0](#) [704.411.018I](#) [704.412.0](#) [704.633.1](#) [704.730.1](#) [704.733.0](#) [862.8102](#) [G6083](#)
[9PA24](#) [A0107X](#) [A019307](#) [ADC-418G](#) [12MA7](#) [ASDHHY-B](#) [HW1F-3G](#) [HW1M-L2222](#) [HW4S-31L](#) [200-.704-00](#) [JS-10008](#) [JS-10083](#) [JS-10118](#) [JS-10133](#) [JS-10277](#) [JS-10389](#) [JS-150](#) [JS-552](#) [JS-555](#) [JS-68](#) [JS-6-B](#) [JS-91](#) [JS-94](#) [22-211.011](#) [9001KXSDC](#) [92-458.500](#) [SAPT654133](#)
[2PA3](#) [SW53AA2](#) [302561](#) [LW2L-A0](#) [3E-10.4](#) [468-10243-001](#) [51-030.005](#) [JM-13](#) [JS-10120](#) [JS-138-B](#) [JS-143-B](#)