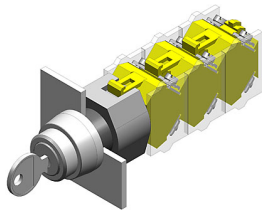


EAO – Your Expert Partner for Human Machine Interfaces

704.115.0 - Keylock switch actuator 3 positions

704.115.0 - Keylock switch actuator 3 positions



Attention: The preview is based on a sample product. This can differ from your current configuration.

Mounting

Mounting cut-out \varnothing 22,3 mm
Design raised

Front

Front shape round
Front dimension \varnothing 29 mm
Front bezel colour natural
Front bezel material Aluminium

Other Attributes

Weight 0,070 kg

Operating-/Indication part

Switching angle

IP-Rating

Front protection IP65

Actuator

Switching action Momentary - Rest(a) - Momentary

Switching element

Rotary positions 3
max. number of switching elements 3

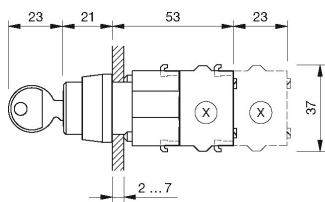
Function

Keylock switch

EAO – Your Expert Partner for Human Machine Interfaces

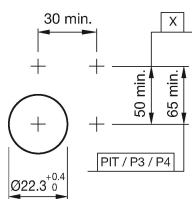
704.115.0 - Keylock switch actuator 3 positions

Dimensions



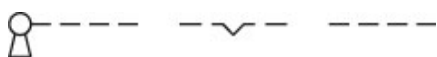
X = Screw terminal

Mounting cut-outs

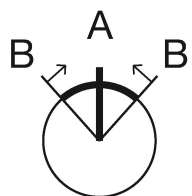


PIT = Push-in terminal

Wiring diagram



Switching positions



Additional information

Locknumbers 251, lock type Ronis
Two keys are supplied with each key lock switch
Further lock numbers see «Technical data»
Max. 3 switching elements can be clipped on

Legend

Switching action: A = Rest, B = Momentary

X-ON Electronics

Largest Supplier of Electrical and Electronic Components

Click to view similar products for [Switch Actuators](#) category:

Click to view products by [EAO](#) manufacturer:

Other Similar products are found below :

[LW1B-A0L](#) [LW1B-M0](#) [680-4000-00](#) [704.012.618](#) [704.096.0](#) [704.411.018I](#) [704.412.0](#) [704.633.1](#) [704.730.1](#) [704.733.0](#) [862.8102](#) [G6083](#)
[9PA24](#) [A0107X](#) [A019307](#) [ADC-418G](#) [12MA7](#) [ASDHHY-B](#) [HW1F-3G](#) [HW1M-L2222](#) [HW4S-31L](#) [200-.704-00](#) [JS-10008](#) [JS-10083](#) [JS-10118](#) [JS-10133](#) [JS-10277](#) [JS-10389](#) [JS-150](#) [JS-552](#) [JS-555](#) [JS-68](#) [JS-6-B](#) [JS-91](#) [JS-94](#) [22-211.011](#) [9001KXSDC](#) [92-458.500](#) [SAPT654133](#)
[2PA3](#) [SW53AA2](#) [302561](#) [LW2L-A0](#) [3E-10.4](#) [468-10243-001](#) [51-030.005](#) [JM-13](#) [JS-10120](#) [JS-138-B](#) [JS-143-B](#)