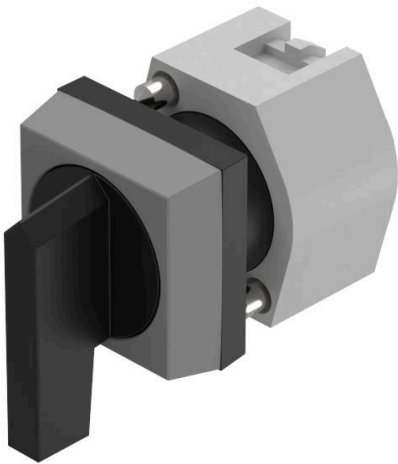


# EAO – Your Expert Partner for Human Machine Interfaces

## 704.294.0 - Selector switch 3 positions long lever square - Actuator

### 704.294.0 - Selector switch 3 positions long lever square - Actuator



*Attention: The preview is based on a sample product. This can differ from your current configuration.*

#### Attribute

Design	raised
Front dimension	30 mm x 30 mm
Front form	square
IP front protection	IP65
Mounting cut-out	Ø 22.3 mm
Front bezel colour	Grey
Front bezel material	Plastic
Lever colour	Black
Lever illumination	non illuminative
Lever material	plastic
Lever shape	long
Rotary positions	3
Switching action	Momentary - Rest - Momentary
Switching angle	42° left / 42° right
Weight	0.034 kg

#### Schaltelement

max. number of switching elements	3
-----------------------------------	---

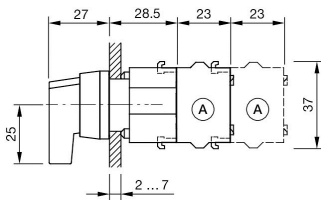
#### Function

Selector switch

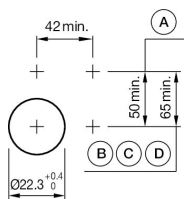
# EAO – Your Expert Partner for Human Machine Interfaces

## 704.294.0 - Selector switch 3 positions long lever square - Actuator

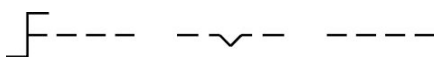
### Dimensions



### Mounting cut-outs



### Wiring diagrams



### Additional information

Max. 3 switching elements can be clipped on

Max. 3 switching elements can be clipped on

## X-ON Electronics

Largest Supplier of Electrical and Electronic Components

*Click to view similar products for [Industrial Panel Mount Indicators / Switch Indicators](#) category:*

*Click to view products by [EAO](#) manufacturer:*

Other Similar products are found below :

[LW1A-P1-GD](#) [LW1A-P1-W](#) [01-931.3](#) [01-152.025](#) [73.362.4028.0](#) [750-1520](#) [9001OA120](#) [A0142N5](#) [A3DT-500Y](#) [AL6M-LK3-R](#) [AL6M-P7P-A](#) [AOLQW-2B0600](#) [AP1M255-A](#) [APD106LN-G](#) [APD106LN-S](#) [APN1126-G](#) [APS122DN-W](#) [ASLWLD-G](#) [ASLWLD-R](#) [ATN2100](#) [AYLW4L-A](#) [18-237.035](#) [HW1A-L1-GD](#) [HW1A-P2-GL](#) [HW1X-BM411-R](#) [HW2A-L1-GL](#) [HW2A-P1-GD](#) [HWAZ1N-OB](#) [PA2100/2](#) [PA2200/1](#) [PA2SHIELD](#) [LA3P-1C03V-Y](#) [96-923.5](#) [A0244J2](#) [LSPD-120A](#) [LSPD-1Y](#) [LSPD-6A](#) [LSPD-6DA](#) [LSPD-6DW](#) [LSPD-6DY](#) [LSPD-6R](#) [LSPD-6W](#) [AL6H-LK3-A](#) [AL6H-P4-JW](#) [AL6M-LK1-MG](#) [AP8M155-G](#) [APD106LN-W](#) [APN106L-O](#) [21-931.9](#) [25.168.0553.0](#)