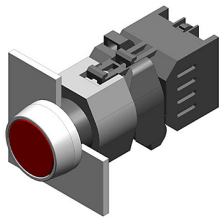


# EAO – Your Expert Partner for Human Machine Interfaces

## 704.633.1 - Flasher actuator front illumination round

### 704.633.1 - Flasher actuator front illumination round



*Attention: The preview is based on a sample product. This can differ from your current configuration.*

#### Mounting

Mounting cut-out Ø 22,3 mm  
Design raised

#### Other Attributes

Weight 0,020 kg

#### IP-Rating

Front protection IP65

#### Actuator

Housing material Plastic  
Housing colour grey

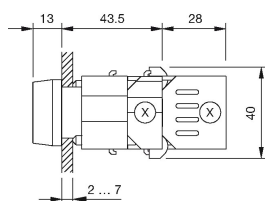
#### Function

Flasher

# EAO – Your Expert Partner for Human Machine Interfaces

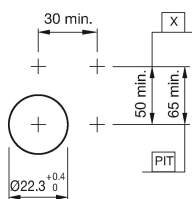
704.633.1 - Flasher actuator front illumination round

## Dimensions



X = Screw terminal

## Mounting cut-outs



PIT = Push-in terminal

## **X-ON Electronics**

Largest Supplier of Electrical and Electronic Components

*Click to view similar products for [Switch Actuators](#) category:*

*Click to view products by [EAO](#) manufacturer:*

Other Similar products are found below :

[LW1B-A0L](#) [LW1B-M0](#) [680-4000-00](#) [862.8102](#) [G6083](#) [9PA24](#) [A019307](#) [14-415.036K](#) [ASDHHY-B](#) [HW1F-3G](#) [HW4L-M0](#) [200-.704-00](#)  
[JS-10008](#) [JS-10083](#) [JS-10118](#) [JS-10133](#) [JS-10277](#) [JS-10389](#) [JS-150](#) [JS-552](#) [JS-555](#) [JS-68](#) [JS-6-B](#) [JS-91](#) [JS-94](#) [92-458.500](#) [SAPT654133](#)  
[SW53AA2](#) [LW2L-A0](#) [3E-12.0](#) [468-10243-001](#) [51-030.002](#) [51-030.005](#) [JM-13](#) [JS-10120](#) [JS-138-B](#) [JS-143-B](#) [JS-551](#) [JS-5-C](#) [KRR12](#)  
[LLDPZ00-000](#) [500-102](#) [030-2196-006](#) [110164](#) [704.630.1](#) [704.730.0](#) [704.732.0](#) [704.732.1](#) [862.8106](#) [51-378.FAD](#)