

EAO – Your Expert Partner for Human Machine Interfaces

704.925.7 - Protective cover round, flush design

704.925.7 - Protective cover round, flush design



Attention: The preview is based on a sample product. This can differ from your current configuration.

Mounting

Design flush

Other Attributes

Dimension 37 x 44.5 mm
Weight 0,006 kg
Material Plastic
Colour colourless

IP-Rating

Front protection IP65

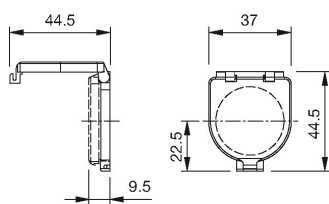
Optics

Optics transparent

EAO – Your Expert Partner for Human Machine Interfaces

704.925.7 - Protective cover round, flush design

Dimensions



Additional information

hinged, with means for sealing

for pushbutton

Front panel thickness reduced by 2 mm

Please note that bigger minimum distances are necessary

X-ON Electronics

Largest Supplier of Electrical and Electronic Components

Click to view similar products for [Switch Cases / Switch Covers](#) category:

Click to view products by [EAO](#) manufacturer:

Other Similar products are found below :

[704.925.2](#) [AMS-8C](#) [DPS8L2](#) [DPS8P2](#) [DPS8PW2](#) [AP-DV](#) [PBBOX1HBY](#) [PBBOX4HBY](#) [SA1074](#) [HE9Z-D5Y](#) [3107](#) [A3C-3002](#) [L188](#)
[EUK-704.927.0](#) [HE9Z-D5N1](#) [W42](#) [L180](#) [M539](#) [HE9Z-D5B](#) [08-0-0-01 905](#) [08-0-0-02](#) [M1080](#) [435238-5](#) [M1080-1](#) [704.927.6](#) [51-920](#) [61-](#)
[9922.0](#) [HW9Z-KL1](#) [9001K7](#) [A3PJ-5060](#) [113160 2202](#) [113260 2202](#) [113260 M12 2201](#) [L167](#) [SA1072](#) [M1080-2](#) [PBBOX1HBG](#)
[PBBOX3HBG](#) [PBBOX4HBG](#) [1.20.810.302/0000](#) [3109](#) [3103](#) [3206](#) [3209](#) [61-9920.0](#) [61-9924.0](#) [76P02](#) [76P06](#) [76P07](#) [3PA1](#)