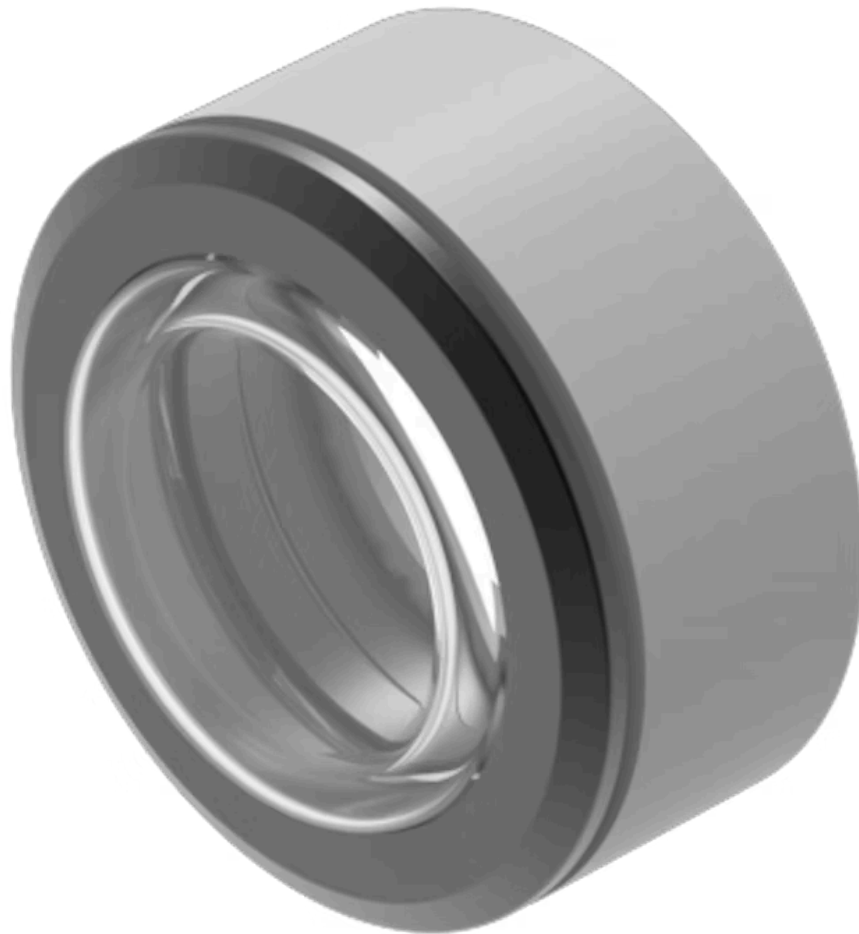


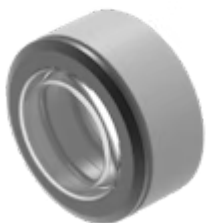
Front bezel set

704.955.4



<https://eao.com/p/704.955.4>

Your product:



704.955.4 Front bezel set

FRONT

Front dimension:	Ø 35 mm
Front form:	round
Front bezel colour:	Black
Front bezel material:	Aluminium
Front bezel type:	With transparent silicone membrane

MOUNTING

Mounting type:	Panel mounting
-----------------------	----------------

MECHANICAL CHARACTERISTIC

Weight:	0.015 kg
----------------	----------

CERTIFICATE

REACH:	REACH compliant
RoHS:	RoHS compliant

OTHER

Short Description:	Front bezel set, Ø 35 mm, Black, Aluminium
Dimension:	Ø 35 mm
Hints:	Front bezel to be mounted with a torque of 0.4 Nm onto actuator, Before assembling remove the flat gasket of the switch, The colour of anodised aluminium parts can vary due to technical production reasons

X-ON Electronics

Largest Supplier of Electrical and Electronic Components

Click to view similar products for [Switch Bezels / Switch Caps](#) category:

Click to view products by [EAO](#) manufacturer:

Other Similar products are found below :

[896809000](#) [LW2A-B1-G](#) [7527](#) [76](#) [760203000](#) [760503000](#) [766601000](#) [785105000](#) [785106000](#) [79211759](#) [MG12KB](#) [MH11](#) [MHU31](#)
[800C2BLK](#) [MJ1216](#) [MJ33](#) [MJ612](#) [908-1634](#) [95CAP-011](#) [11-932.7](#) [99-902.9](#) [99-909.5](#) [99-920.8](#) [A0261A](#) [11-931.2](#) [11-936](#) [AKTSC22B](#)
[AT496F](#) [AT496H](#) [161006](#) [1825068-3](#) [187-1872](#) [188-1471](#) [1DFBLK](#) [1DS30](#) [1KBS1116](#) [C159](#) [1TS00](#) [1X02](#) [1X03](#) [908-1632](#) [29PN](#) [2C00](#)
[2D032](#) [2D091](#) [2F204](#) [2J3](#) [2K00](#) [304-1871](#) [304-1875](#)