

Data sheet Illuminated pushbutton Ø 22 mm stainless steel 316L.

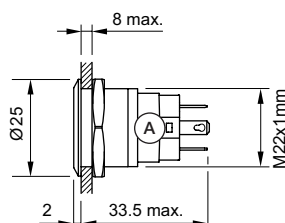
Part No.: 82-6651.1000

Technical data

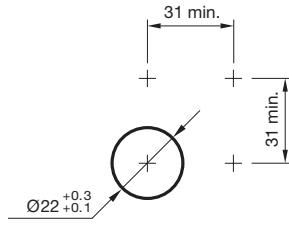


Front form	round
Mounting cut-out	Ø 22.3 mm
Terminal	Plug-in terminal, 2.8 x 0.5 mm
Operating Travel	ca. 3 mm
Lens illumination	non illuminative
Lens colour	Silver
Lens shape	flush
Lens material	Stainless steel 316L
Lens optics	opaque
Front bezel shape	flush
Front bezel material	Stainless steel 316L
Weight	0.026 kg
IP front protection	IP65, IP67
Contact material	Silver
Switching action	Momentary
Switching system	Snap-action switching element
Switching rating	36 V AC/DC @ 0,6 A
Contacts	1 FS
Operating temperature	- 30 °C ... + 70 °C
Approbations	CB, CCC, C UL, UL
Operating force	4 ... 7 N
Climate resistance	Damp heat, 21 days according to IEC 60512-11
Hints	
	<ul style="list-style-type: none"> ▪ Switching voltage: max. 36 V AC/1A, max. 36 V DC/0.6

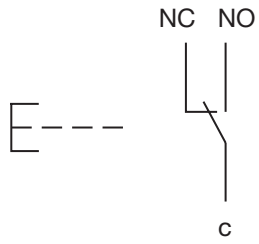
Dimensions



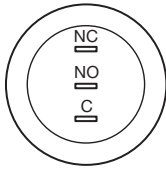
Mounting cut-outs



Wiring diagrams



Component layouts



X-ON Electronics

Largest Supplier of Electrical and Electronic Components

Click to view similar products for [Pushbutton Switches](#) category:

Click to view products by [EAO](#) manufacturer:

Other Similar products are found below :

[8971K1133](#) [LW2L-M1C20M-A](#) [01-153.025](#) [M22-D-R-GB0/K11](#) [67021K512](#) [701PB580](#) [7199K101](#) [810K12910](#) [810KSV30B](#) [FLT 2U EE](#)
[01A](#) [MML21EA2ADK](#) [MML21KA3ABK](#) [MML23KW3AA01W](#) [8418K2](#) [8442K3](#) [8450K1](#) [860K11911T01A](#) [861901](#) [861K11911T01A07](#)
[861K13810T00A14](#) [861K13911](#) [8646AB6X718UL](#) [9533CD4+U574+U4922](#) [99-450.837](#) [99-453.837](#) [A2PMA1X03EC56](#) [A3A-7310](#) [A3A-](#)
[7340](#) [12037A2ULCSA](#) [1203A2UL](#) [ABGW410-R](#) [1211390004](#) [ABN400-R](#) [121382](#) [1213C3](#) [HE3B-M2](#) [1211500044](#) [121194](#) [1212MRA](#)
[1232A6NF](#) [121489](#) [1223A2ULCSA](#) [D5P-MT4](#) [13435AG](#) [13445AD29GX768](#) [AG23-L2](#) [AH165-2SGLG1TE3](#) [AH165-TGFY22](#) [AH165-](#)
[TGL5Y11E3](#) [AH165-TGLR11AA3](#)