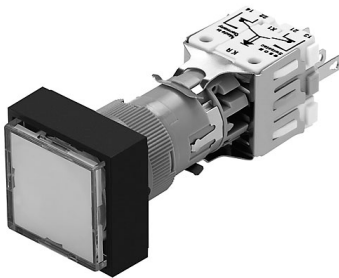


EAO – Your Expert Partner for Human Machine Interfaces

902F.000-00 - Illuminated pushbutton actuator square

902F.000-00 - Illuminated pushbutton actuator square



Attention: The preview is based on a sample product. This can differ from your current configuration.

Mounting

Behind panel depth	55 mm
Mounting cut-out	Ø 16 mm
Design	raised

Front

Front dimension	24 mm x 24 mm
Front shape	square

Other Attributes

Weight	0,014 kg
--------	----------

Operating-/Indication part

Lens illumination	illuminative
-------------------	--------------

IP-Rating

Front protection	IP40
------------------	------

Connection Method

Terminal	Solder 2.8 x 0.5 mm
----------	---------------------

Actuator

Switching action	
Housing colour	grey
Housing material	Plastic

Switching element

Switching current	5 A
Contacts	2 NC + 2 NO
Switching system	Snap-action switching element
Contact material	
Switching voltage	250 V AC

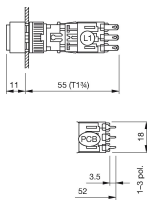
Function

Illuminated pushbutton

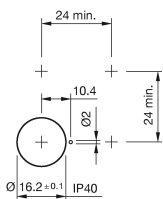
EAO – Your Expert Partner for Human Machine Interfaces

902F.000-00 - Illuminated pushbutton actuator square

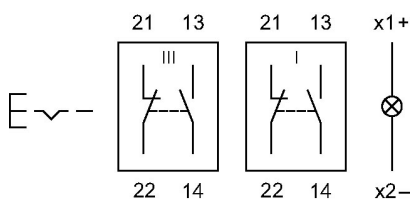
Dimensions



Mounting cut-outs



Wiring diagram



Additional information

Protection degree IP 40/IP 65 is determined by front bezel and lens
Maintain to momentary action is switchable, reversible

Legend

Contacts: NC = Normally closed, NO = Normally open
Switching action: B = Momentary, C = Maintained

X-ON Electronics

Largest Supplier of Electrical and Electronic Components

Click to view similar products for [Pushbutton Switches](#) category:

Click to view products by [EAO](#) manufacturer:

Other Similar products are found below :

[8940K2012](#) [LW1L-M1C10V-A](#) [LW1L-M1C70-A](#) [LW2L-A1C20M-GD](#) [LW2L-M1C20M-A](#) [60324L](#) [M22-D-R-GB0/K11](#) [M7E-HRN2](#)
[67021K512](#) [67081K512X](#) [701PB580](#) [7199K101](#) [810K12910](#) [810KSV30B](#) [MML21EA2ADK](#) [MML21KA3ABK](#) [MML23KA3AC05K-001](#)
[MML23KW3AA01W](#) [8418K2](#) [8442K3](#) [8450K1](#) [860K11911T01A](#) [861901](#) [861K11911T01A07](#) [861K13810T00A14](#) [861K13911](#)
[8646AB6X718UL](#) [8646ABUL](#) [9001KXRK](#) [907AYY100](#) [PMHD155A1](#) [9533CD4+U574+U4922](#) [95-414.000](#) [99-450.837](#) [99-453.837](#)
[PV3H2B0NN-341](#) [1203MRA](#) [A22NZBGANGA](#) [A22NZBNANGA](#) [A22NZMPATRA](#) [A2PMA1X03EC56](#) [A3A-5123-02](#) [A3A-7140](#) [A3A-7310](#) [A3A-7340](#) [A3U-TMW-A2C-5M](#) [A595](#) [12037A2ULCSA](#) [ABD122N-B](#) [1211390004](#)