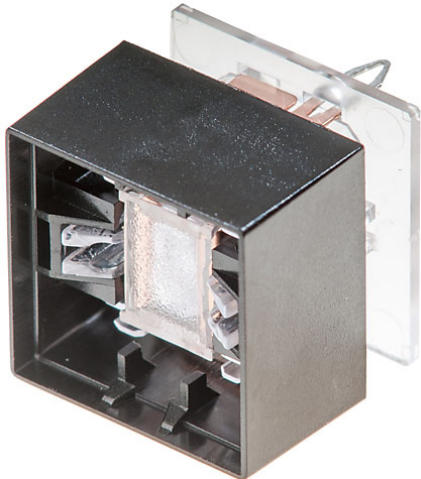


# EAO – Your Expert Partner for Human Machine Interfaces

95-414.000 - Switching element

## 95-414.000 - Switching element



*Attention: The preview is based on a sample product. This can differ from your current configuration.*

### Front

Front shape square  
Front dimension 19 mm x 19 mm

### Other Attributes

Weight 0,003 kg

### Operating-/Indication part

Lens illumination illuminative

### IP-Rating

Front protection IP40

### Connection Method

Terminal PCB

### Actuator

Switching action Momentary

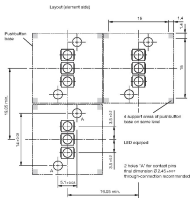
### Switching element

Switching system Slow-make switching element  
Contacts 1 NO  
Switching voltage 48 V DC  
Switching current 0.05 A  
Contact material

# EAO – Your Expert Partner for Human Machine Interfaces

95-414.000 - Switching element

## Component layout



## Additional information

for combining with lens and diffuser

Suitable for PCB thickness 1.5 to 2.5 mm

Special spring clip contacts position and hold the pushbutton in place during the soldering process. The soldering provides the contacting and the mechanical strength. The pushbutton is designed for panel mounting only

## Legend

Contacts: NO = Normally open

Switching action: B = Momentary

## X-ON Electronics

Largest Supplier of Electrical and Electronic Components

*Click to view similar products for [Pushbutton Switches](#) category:*

*Click to view products by [EAO](#) manufacturer:*

Other Similar products are found below :

[8940K2012](#) [LW1L-M1C10V-A](#) [LW1L-M1C70-A](#) [LW2L-A1C20M-GD](#) [LW2L-M1C20M-A](#) [60324L](#) [M22-D-R-GB0/K11](#) [M7E-HRN2](#)  
[67021K512](#) [67081K512X](#) [701PB580](#) [7199K101](#) [810K12910](#) [810KSV30B](#) [MML21EA2ADK](#) [MML21KA3ABK](#) [MML23KA3AC05K-001](#)  
[MML23KW3AA01W](#) [8418K2](#) [8442K3](#) [8450K1](#) [860K11911T01A](#) [861901](#) [861K11911T01A07](#) [861K13810T00A14](#) [861K13911](#)  
[8646AB6X718UL](#) [8646ABUL](#) [9001KXRK](#) [907AYY100](#) [PMHD155A1](#) [9533CD4+U574+U4922](#) [95-414.000](#) [99-450.837](#) [99-453.837](#)  
[PV3H2B0NN-341](#) [1203MRA](#) [A22NZBGANGA](#) [A22NZBNANGA](#) [A22NZMPATRA](#) [A2PMA1X03EC56](#) [A3A-5123-02](#) [A3A-7140](#) [A3A-7310](#) [A3A-7340](#) [A3U-TMW-A2C-5M](#) [A595](#) [12037A2ULCSA](#) [ABD122N-B](#) [1211390004](#)