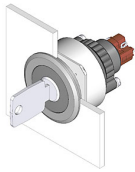


EAO – Your Expert Partner for Human Machine Interfaces

K14-135.22200 - Keylock switch

K14-135.22200 - Keylock switch



Attention: The preview is based on a sample product. This can differ from your current configuration.

Mounting

Design	flush
Mounting cut-out	Ø 30,5 mm

Front

Front dimension	Ø 35 mm
Front shape	round

Other Attributes

Weight	0,044 kg
--------	----------

Operating-/Indication part

Switching angle	90° right
-----------------	-----------

IP-Rating

Front protection	IP65
------------------	------

Connection Method

Terminal	Soldering terminal
----------	--------------------

Actuator

Switching action	Rest(a) - Maintain(a)
------------------	-----------------------

Switching element

Rotary positions	2
Switching system	Snap-action switching element
Contacts	1 NC + 1 NO
Switching current	5 A
Contact material	
Switching voltage	250 V AC

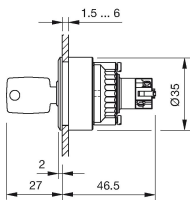
Function

Keylock switch	
----------------	--

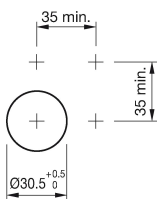
EAO – Your Expert Partner for Human Machine Interfaces

K14-135.22200 - Keylock switch

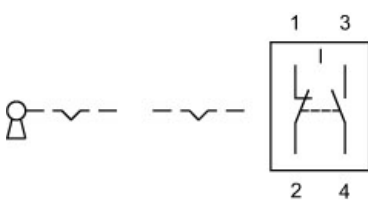
Dimensions



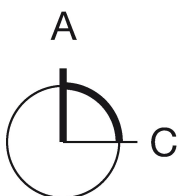
Mounting cut-outs



Wiring diagram



Switching positions



Additional information

Lock numbers 1001, lock type KABA
Two keys are supplied with each keylock switch.
Optional lock numbers on request

Legend

Contacts: NC = Normally closed, NO = Normally open

X-ON Electronics

Largest Supplier of Electrical and Electronic Components

Click to view similar products for [Keylock Switches](#) category:

Click to view products by [EAO](#) manufacturer:

Other Similar products are found below :

[89496-09](#) [58J1007](#) [58J8A45-01B05N](#) [719-0201-000](#) [719-0202-000](#) [719-0702-000](#) [719-5504-000](#) [84800-04](#) [GKNC33L](#) [GKNC3L](#)
[PVA2OAH5](#) [HA1K-2C2VA-2](#) [14-235.022K](#) [AS6H-2K2A](#) [AS6M-2K1B](#) [AS6Q-2K2A](#) [AS6Q-3K2A](#) [1571487-1](#) [KEY-AS6](#) [KH3C-20C](#)
[8928K493](#) [2SWK131AL102](#) [AS6M-2K1A](#) [AS6Q-2K1PB](#) [51-401.036D](#) [51-414.036D](#) [HW1K-31BF20](#) [HW1K-3HF20](#) [Y1112-2027CLFT](#)
[51-378.AD](#) [51-404.036D](#) [51-405.036D](#) [1-1437597-8](#) [58J8A36-01B04N](#) [58M1422](#) [86945-05](#) [719-0204-000](#) [719-0205-000](#) [719-0801-000](#)
[719-0804-000](#) [719-0805-000](#) [88422-18](#) [58J8A90-01B02N](#) [58J8A90-01C02N](#) [58J9P36-01B09N](#) [58J8A36-01C03N](#) [GKRA3K1A2-F03-C](#)
[GKBB14L6](#) [14-236.025K1020](#) [GKFE16LXA2](#)